



199-01^{Q&As}

Riverbed Certified Solutions Professional

Pass Riverbed 199-01 Exam with 100% Guarantee

Free Download Real Questions & Answers **PDF** and **VCE** file from:

<https://www.passapply.com/199-01.html>

100% Passing Guarantee
100% Money Back Assurance

Following Questions and Answers are all new published by Riverbed
Official Exam Center

- ⚙️ **Instant Download** After Purchase
- ⚙️ **100% Money Back** Guarantee
- ⚙️ **365 Days** Free Update
- ⚙️ **800,000+** Satisfied Customers





QUESTION 1

What action is taken by the Interceptor if a connection does not match a configured load balance rule and the default pool is empty?

- A. The connection is forwarded for auto-discovery.
- B. The connection is passed-through.
- C. The connection is rejected.
- D. The connection is reset.

Correct Answer: B

QUESTION 2

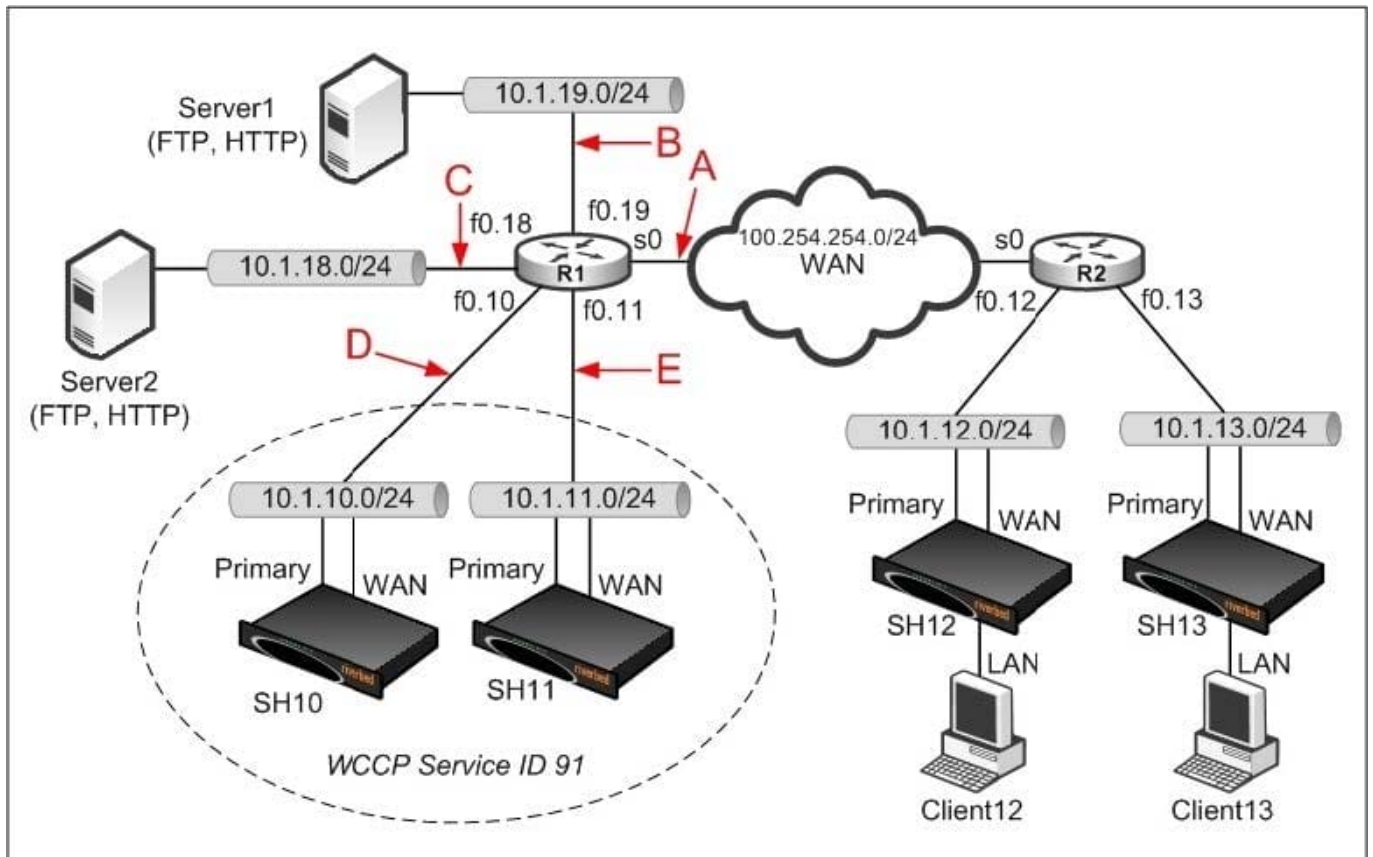
You plan to downgrade a SteelHead from RiOS v9.0.1 (Apr 17 2015) to 8.6.3 (Aug 7 2015). The appliance has not run v8.6.3 previously. Will this be successful?

- A. No, downgrades are only permitted if the target version was previously installed.
- B. No, it is not possible to downgrade RiOS.
- C. Yes, the configuration will be migrated successfully during any downgrade.
- D. Yes, v8.6.3 is a chronologically newer version.

Correct Answer: A

QUESTION 3

In the exhibit, which interfaces should the WCCP router R1 listen to for multicast communication with the server-side Steelhead appliances, assuming the multicast address is 239.0.0.1? (Select 2)



A. A

B. B

C. C

D. D

E. E

Correct Answer: DE

QUESTION 4

How can you provide updates to multiple Steelhead Mobile clients at the same time? (Select 2)

A. Using profiles

B. Using multiple Steelhead Mobile Controllers

C. Using Group IDs

D. Using policies

Correct Answer: CD



QUESTION 5

On the Interceptor appliance, the Networking > Steelheads page displays which of the following?

- A. Optimized connections, Admission Control connection count.
- B. Optimized connections, Pass-through connections count.
- C. Current Connections per Second (CPS), Admission Control count.
- D. Packets per Second, Connections per Second, Optimized connections count.

Correct Answer: A

[199-01 Practice Test](#)

[199-01 Study Guide](#)

[199-01 Exam Questions](#)