



199-01^{Q&As}

Riverbed Certified Solutions Professional

Pass Riverbed 199-01 Exam with 100% Guarantee

Free Download Real Questions & Answers **PDF** and **VCE** file from:

<https://www.passapply.com/199-01.html>

100% Passing Guarantee
100% Money Back Assurance

Following Questions and Answers are all new published by Riverbed
Official Exam Center

-  **Instant Download** After Purchase
-  **100% Money Back** Guarantee
-  **365 Days** Free Update
-  **800,000+** Satisfied Customers





QUESTION 1

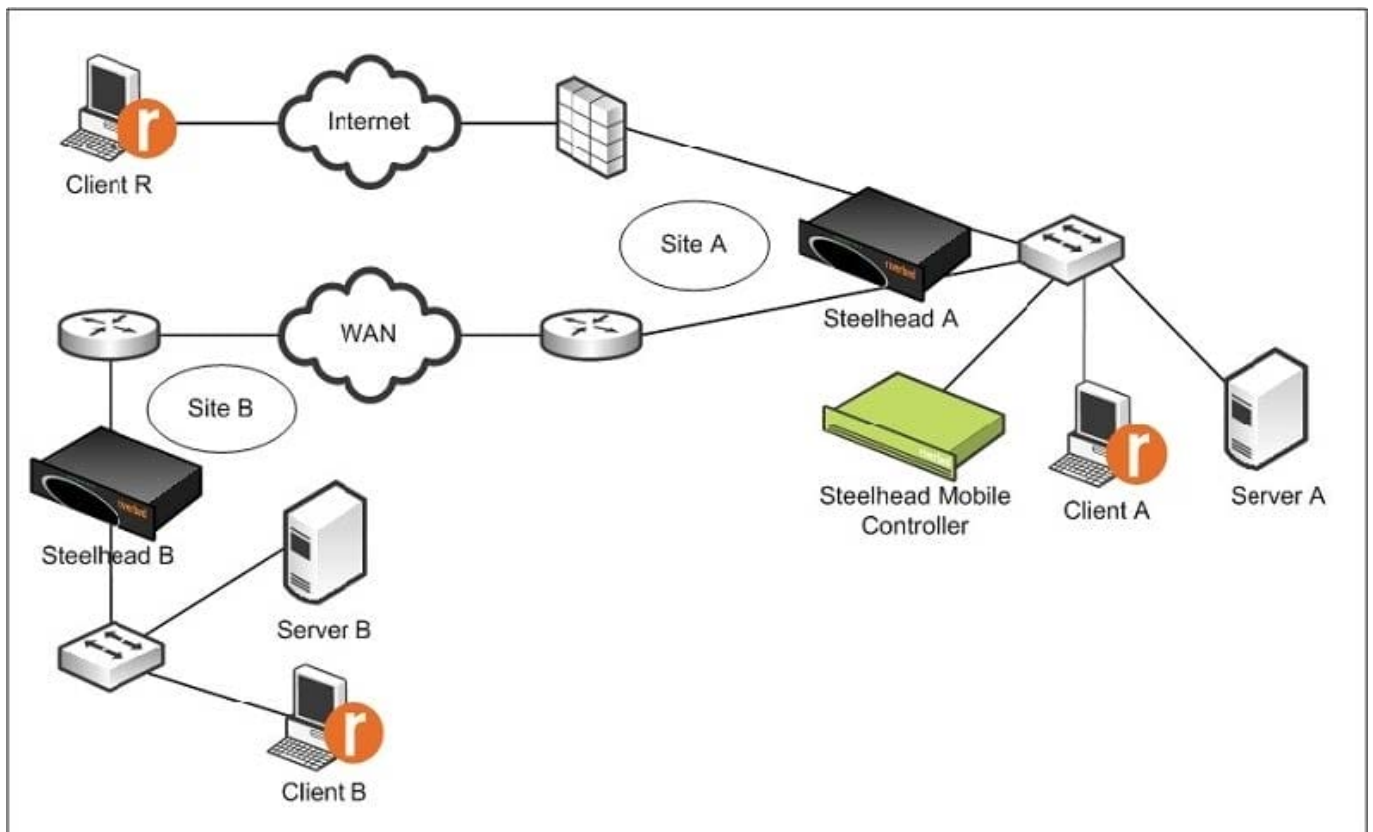
What is the primary purpose of enabling Multiple Interface Support on the Interceptor appliance?

- A. It allows for the ability to support multiple NICs on the Interceptor appliance.
- B. It allows the Interceptor appliance to communicate with Steelhead appliances and other Interceptor appliances using more than one in-path interface.
- C. It allows the Interceptor appliance to communicate using multicast to in-path interfaces on the Steelhead appliances.
- D. It allows the Interceptor appliance to be managed by in-path interfaces as well as the primary interface.

Correct Answer: B

QUESTION 2

Refer to the exhibit.



What configuration option is most relevant on Steelhead A to enable Steelhead Mobile Client R to set up the most efficient optimized connection to Server B?

- A. Enhanced auto-discovery
- B. Simplified Routing



- C. no in-path peering manual enable
- D. in-path rule pass rulenum start
- E. in-path peering rule pass rulenum 1

Correct Answer: A

QUESTION 3

How can you provide updates to multiple Steelhead Mobile clients at the same time? (Select 2)

- A. Using profiles
- B. Using multiple Steelhead Mobile Controllers
- C. Using Group IDs
- D. Using policies

Correct Answer: CD

QUESTION 4

Where are SDR references maintained on a Steelhead appliance?

- A. Persistent storage
- B. USB keys
- C. Flash storage
- D. RSP partition
- E. Configuration file

Correct Answer: A

QUESTION 5

When upgrading from a Steelhead 5050 appliance to a Steelhead 6050 appliance what can be migrated to the new appliance? (Select 2)

- A. Datastore
- B. Licenses
- C. Network configuration
- D. Optimization configurations



E. Serial numbers

Correct Answer: CD

[199-01 Practice Test](#)

[199-01 Study Guide](#)

[199-01 Braindumps](#)