



199-01^{Q&As}

Riverbed Certified Solutions Professional

Pass Riverbed 199-01 Exam with 100% Guarantee

Free Download Real Questions & Answers **PDF** and **VCE** file from:

<https://www.passapply.com/199-01.html>

100% Passing Guarantee
100% Money Back Assurance

Following Questions and Answers are all new published by Riverbed
Official Exam Center

-  **Instant Download** After Purchase
-  **100% Money Back** Guarantee
-  **365 Days** Free Update
-  **800,000+** Satisfied Customers





QUESTION 1

What is the command to clear all statistics on a Steelhead appliance?

- A. (config) # stats clear-all
- B. (config) # clear-all stats
- C. (config) # reset stats
- D. (config) # reload stats clean
- E. (config) # clear stats

Correct Answer: A

QUESTION 2

Connection Pooling works with:

- A. Port and Full Transparency
- B. Correct Addressing and Port Transparency
- C. Correct Addressing only
- D. Correct Addressing, Port and Full Transparency
- E. Full Transparency only

Correct Answer: D

QUESTION 3

A user downloads a Microsoft Excel document from a server over an optimized connection. The transfer is very fast. The user makes some changes to the spreadsheet and then saves the document. The transfer is very slow. The user edited a Word document shortly before but that downloaded and saved at the same fast speeds. What happened to the Excel document?

- A. Microsoft Excel compresses and encrypts the data by default when saving Microsoft Excel data does not perform well for LZ compression and will always be slow.
- B. Microsoft Excel compresses the data by default when saving.
- C. Microsoft Excel reorders the entire data stream when it saves so it is now new (cold) data to the SteelHead.
- D. Microsoft Excel encrypts data by default when saving.

Correct Answer: B



QUESTION 4

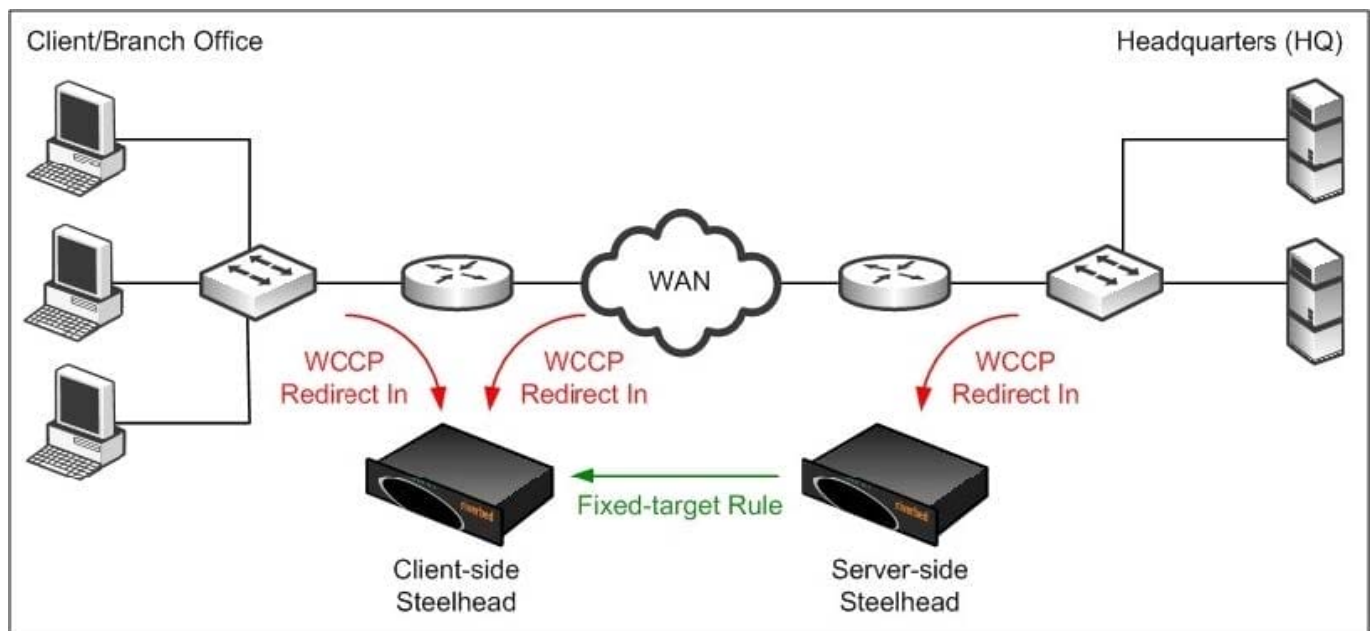
A Windows Vista client tries to download a file from a Windows 2008 server over a 45Mbps link with 200ms. Assuming the connection is optimized, given the default configuration on the Steelhead, what optimization techniques would be applied? 1) Data Streamlining 2) Transport Streamlining 3) MS-SQL Transaction Prediction 4) HighSpeed TCP 5) MX-TCP

- A. 1, 2, 3
- B. 1, 2
- C. 1, 2, 3, 4
- D. 1, 2, 3, 5
- E. 1, 3, 4

Correct Answer: B

QUESTION 5

Refer to the exhibit.



A user from one of your branch offices reports connections to servers are failing after a new deployment. The exhibit shows how the Steelhead appliances have been deployed. Which of the following will most likely fix the issue? (Select 2)

- A. Fixed-target rule is needed on the client-side Steelhead appliance
- B. Change the WCCP to use Redirect Out instead of Redirect In
- C. Remove Redirect-IN from the LAN at the Branch Office
- D. Add Redirect-IN on the WAN at the HQ



E. Remove fixed-target rule from the server-side Steelhead appliance

Correct Answer: AD

[199-01 PDF Dumps](#)

[199-01 VCE Dumps](#)

[199-01 Exam Questions](#)