



156-115.77^{Q&As}

Check Point Certified Security Master

Pass CheckPoint 156-115.77 Exam with 100% Guarantee

Free Download Real Questions & Answers **PDF** and **VCE** file from:

<https://www.passapply.com/156-115-77.html>

100% Passing Guarantee
100% Money Back Assurance

Following Questions and Answers are all new published by CheckPoint Official Exam Center

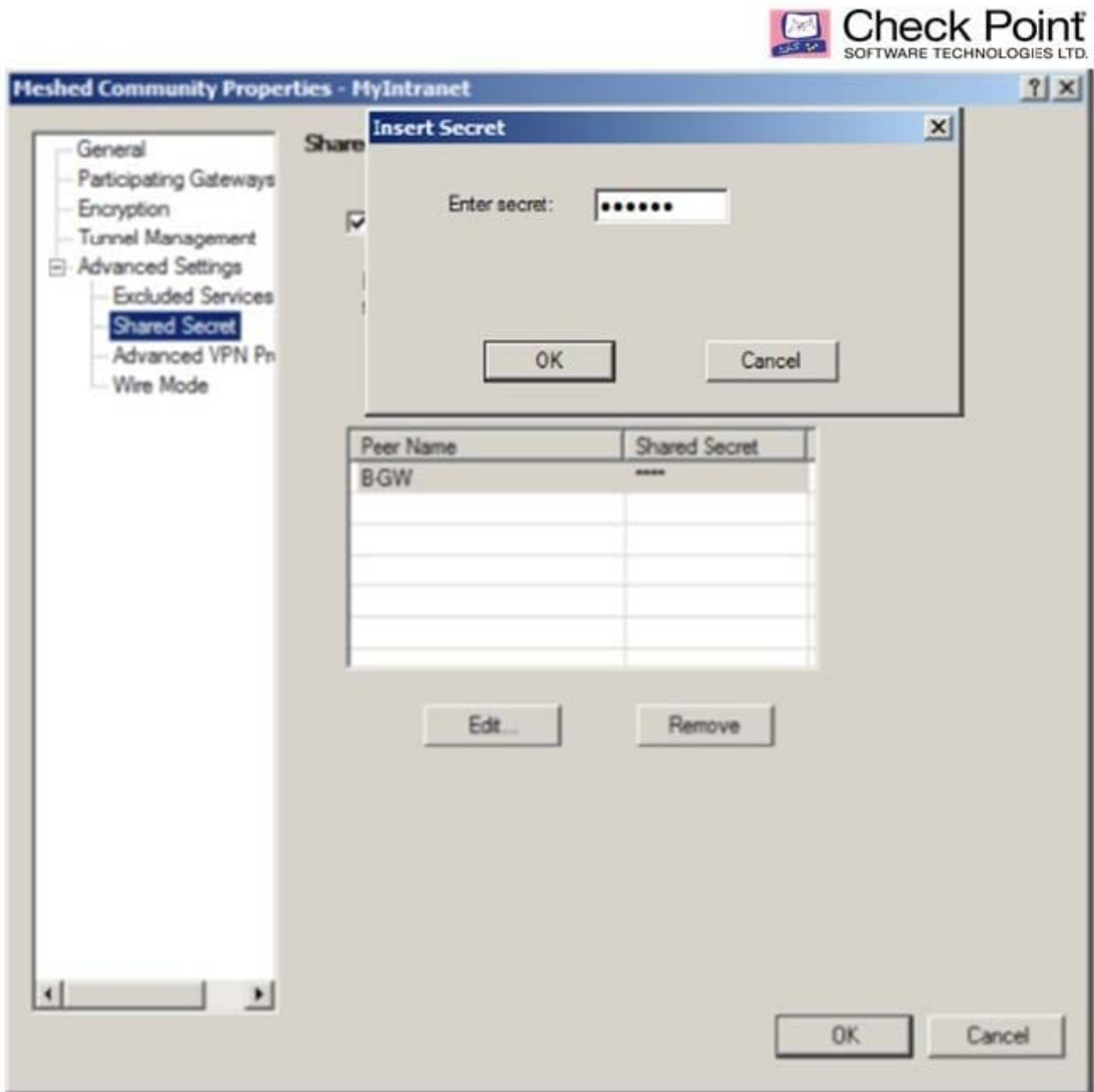
-  **Instant Download** After Purchase
-  **100% Money Back** Guarantee
-  **365 Days** Free Update
-  **800,000+** Satisfied Customers





QUESTION 1

You are setting up VPN between two gateways Local-GW and New-GW and want to use shared secret. For some reason New-GW is not showing up in the shared secret properties under mesh community properties. What is the most likely reason why the New-GW is not displayed?



©2014 Check Point Software Technologies Ltd. 13

A. Gateway is locally managed by the same management station as Local-GW and shared secret is not supported for this configuration

B. New-GW has to have Advanced properties > shared secret enabled.



- C. You need to install database by selecting Policy > Install database before gateway can be added.
- D. Gateway is 600 appliance and does not support "shared secret" option.

Correct Answer: A

QUESTION 2

You are finding that some users are complaining about slow connection speed. You would like to review a summary of your connections, including which connections are accelerated and those that are not. What command could you use?

- A. fw ctl pstat
- B. fwaccel perf
- C. fw tab -t connections -s
- D. fwaccel stats -s

Correct Answer: D

QUESTION 3

Why would you not see a CoreXL configuration option in cpconfig?

- A. The gateway only has one processor core.
- B. CoreXL is not enabled in the gateway object.
- C. CoreXL is not licensed.
- D. CoreXL is disabled via policy.

Correct Answer: A

QUESTION 4

Which of these commands can be used to display the IPv6 status?

- A. show ipv6-stat
- B. show ipv6 all
- C. show ipv6 status
- D. show ipv6-status

Correct Answer: D



QUESTION 5

Which of these commands can be used to display the IPv6 routes?

- A. show route
- B. show ipv6 route
- C. show routes all
- D. show route ipv6

Correct Answer: B

[156-115.77 VCE Dumps](#)

[156-115.77 Practice Test](#)

[156-115.77 Braindumps](#)