



# 100-101<sup>Q&As</sup>

CCNA Interconnecting Cisco Networking Devices 1 (ICND1)

## Pass Cisco 100-101 Exam with 100% Guarantee

Free Download Real Questions & Answers **PDF** and **VCE** file from:

<https://www.passapply.com/100-101.html>

100% Passing Guarantee  
100% Money Back Assurance

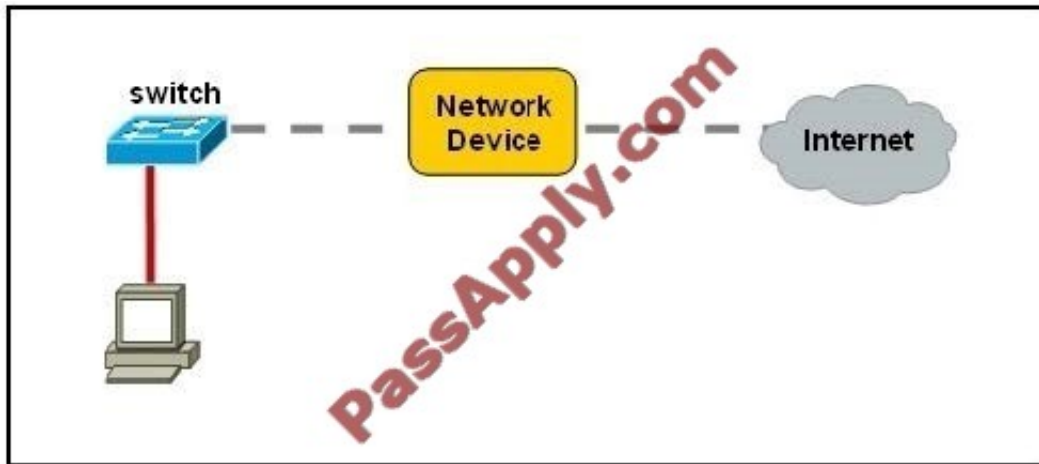
Following Questions and Answers are all new published by Cisco  
Official Exam Center

- ⚙ **Instant Download** After Purchase
- ⚙ **100% Money Back** Guarantee
- ⚙ **365 Days** Free Update
- ⚙ **800,000+** Satisfied Customers



**QUESTION 1**

Refer to the exhibit.



A network device needs to be installed in the place of the icon labeled Network Device to accommodate a leased line attachment to the Internet. Which network device and interface configuration meets the minimum requirements for this installation?

- A. a router with two Ethernet interfaces
- B. a switch with two Ethernet interfaces
- C. a router with one Ethernet and one serial interface
- D. a switch with one Ethernet and one serial interface
- E. a router with one Ethernet and one modem interface

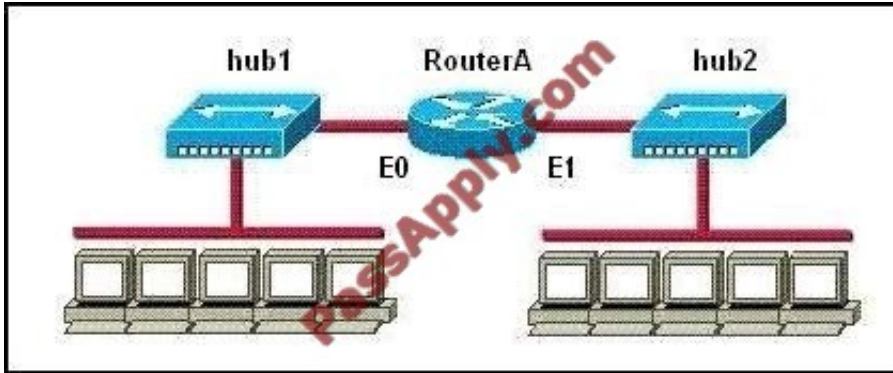
Correct Answer: C

Only a router can terminate a leased line attachment access circuit, and only a router can connect two different IP networks. Here, we will need a router with two interfaces, one serial connection for the line attachment and one Ethernet interface to connect to the switch on the LAN.

---

**QUESTION 2**

Refer to the exhibit.



How many collision domains are shown?

- A. one
- B. two
- C. three
- D. four
- E. six
- F. twelve

Correct Answer: B

Hubs create single collision and broadcast domains.

### QUESTION 3

In the configuration of NAT, what does the keyword overload signify?

- A. When bandwidth is insufficient, some hosts will not be allowed to access network translation.
- B. The pool of IP addresses has been exhausted.
- C. Multiple internal hosts will use one IP address to access external network resources.
- D. If the number of available IP addresses is exceeded, excess traffic will use the specified address pool.

Correct Answer: C

<http://evilrouters.net/2009/07/09/configuring-basic-nat-with-overloading/>

Overloading (having multiple clients all NAT'd to the same IP address) is probably the most common implementation (especially for those of us who run NAT on a Cisco box at home!).

### QUESTION 4



Refer to the exhibit.



Why did the device return this message?

- A. The command requires additional options or parameters
- B. There is no show command that starts with ru.
- C. The command is being executed from the wrong router mode.
- D. There is more than one show command that starts with the letters ru.

Correct Answer: D

Answer D is correct because when you type the incomplete command having more same more command same up to types characters it shows display the ambiguous command error.

---

#### QUESTION 5

If an Ethernet port on a router was assigned an IP address of 172.16.112.1/20, what is the maximum number of hosts allowed on this subnet?

- A. 1024
- B. 2046
- C. 4094
- D. 4096
- E. 8190

Correct Answer: C

Each octet represents eight bits. The bits, in turn, represent (from left to right): 128, 64, 32, 16, 8, 4, 2, 1. Add them up and you get 255. Add one for the all zeros option, and the total is 256. Now take away one of these for the network

address (all zeros) and another for the broadcast address (all ones). Each octet represents 254 possible hosts. Or 254 possible networks. Unless you have subnet zero set on your network gear, in which case you could conceivably have 255.

The CIDR addressing format (/20) tells us that 20 bits are used for the network portion, so the maximum number of networks are  $2^{20}$  minus one if you have subnet zero enabled, or minus 2 if not.



You asked about the number of hosts. That will be 32 minus the number of network bits, minus two. So calculate it as  $(2^{(32-20)})-2$ , or  $(2^{12})-2 = 4094$

[Latest 100-101 Dumps](#)

[100-101 Study Guide](#)

[100-101 Exam Questions](#)



VCE & PDF

PassApply.com

<https://www.passapply.com/100-101.html>

2021 Latest passapply 100-101 PDF and VCE dumps Download

To Read the [Whole Q&As](#), please purchase the [Complete Version](#) from [Our website](#).

## Try our product !

100% Guaranteed Success

100% Money Back Guarantee

365 Days Free Update

Instant Download After Purchase

24x7 Customer Support

Average 99.9% Success Rate

More than 800,000 Satisfied Customers Worldwide

Multi-Platform capabilities - [Windows](#), [Mac](#), [Android](#), [iPhone](#), [iPod](#), [iPad](#), [Kindle](#)

We provide exam PDF and VCE of Cisco, Microsoft, IBM, CompTIA, Oracle and other IT Certifications. You can view Vendor list of All Certification Exams offered:

<https://www.passapply.com/allproducts>

## Need Help

Please provide as much detail as possible so we can best assist you.

To update a previously submitted ticket:



 <b>One Year Free Update</b> Free update is available within One Year after your purchase. After One Year, you will get 50% discounts for updating. And we are proud to boast a 24/7 efficient Customer Support system via Email.	 <b>Money Back Guarantee</b> To ensure that you are spending on quality products, we provide 100% money back guarantee for 30 days from the date of purchase.	 <b>Security &amp; Privacy</b> We respect customer privacy. We use McAfee's security service to provide you with utmost security for your personal information & peace of mind.
---	---	--

Any charges made through this site will appear as Global Simulators Limited.

All trademarks are the property of their respective owners.

Copyright © passapply, All Rights Reserved.