



# 050-696<sup>Q&As</sup>

Foundations of Novell Open Enterprise Server NetWare

## Pass Novell 050-696 Exam with 100% Guarantee

Free Download Real Questions & Answers **PDF** and **VCE** file from:

<https://www.passapply.com/050-696.html>

100% Passing Guarantee  
100% Money Back Assurance

Following Questions and Answers are all new published by Novell  
Official Exam Center

- ⚙ **Instant Download** After Purchase
- ⚙ **100% Money Back** Guarantee
- ⚙ **365 Days** Free Update
- ⚙ **800,000+** Satisfied Customers





### QUESTION 1

You are planning to deploy Novell Open Enterprise Server services on an existing NetWare 6.5 server. Which Support Pack must be installed on the server before you can do this?

- A. NetWare 6.5 Support Pack 1
- B. NetWare 6.5 Support Pack 1a
- C. NetWare 6.5 Support Pack 2
- D. NetWare 6.5 Support Pack 3

Correct Answer: D

---

### QUESTION 2

You are installing OES NetWare on new server hardware. The server has dual Pentium 4 CPUs running at 2 GHz, 1 GB of RAM, an integrated 64-bit PCI network board, and mirrored 200 GB hard disk drives. You power on the server and insert the OES NetWare Operating System CD in the server's CD drive. However, the NetWare installation program doesn't run. Instead, you see a message that states "Operating system not found. Please insert a disk in drive A:, then press any key." What is causing this problem?

- A. The OES NetWare installation program doesn't support dual CPUs.
- B. The system must be booted from the OES NetWare Products CD first.
- C. The server's BIOS is not configured to boot from the CD-ROM drive.
- D. The OES NetWare installation program doesn't support integrated network boards.
- E. The OES NetWare installation program isn't compatible with 64-bit PCI network boards.
- F. The server's hard disk drives must be partitioned and formatted before you can install OES NetWare.

Correct Answer: C

---

### QUESTION 3

You need to stop the DNS service (provided by the NAMED. NLM module) on your OES NetWare server. Which command will do this?

- A. STOP NAMED. NLM
- B. KILL NAMED. NLM
- C. NAMED. NLM -EXIT



D. UNLOAD NAMED. NLM

E. NAMED. NLM -UNLOAD

Correct Answer: D

---

#### QUESTION 4

Which utility is used to prepare your network for an installation of an OES NetWare server?

A. Rsync

B. iManager

C. Remote Manager

D. NetWare Migration Utility

E. NetWare Deployment Manager

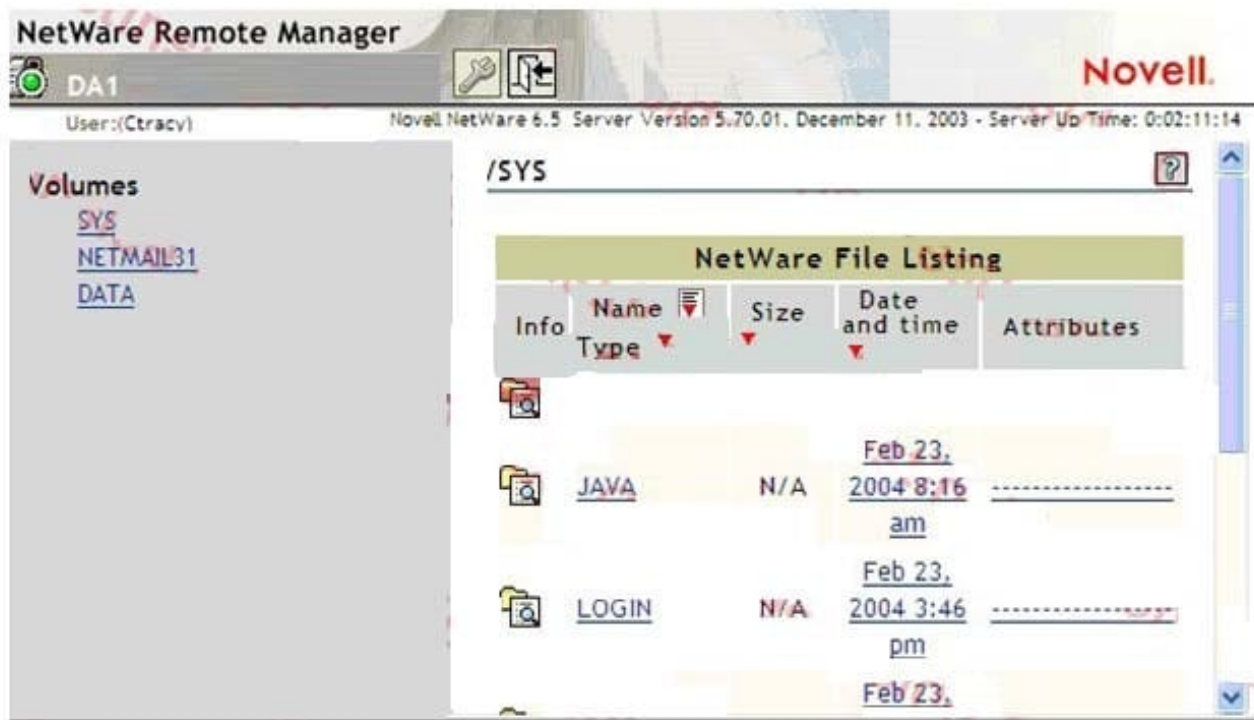
F. NetWare Server Consolidation Utility

Correct Answer: E

---

#### QUESTION 5

Click the Exhibit button to begin.



When you open Remote Manager and authenticate to your DA1 server, only a minimal set of options are displayed; as shown in the exhibit. Why is this happening?

- A. DA1 has abended.
- B. You need to reload PORTAL.NLM.
- C. You need to reload HTTPSTK.NLM.
- D. You\\re using an outdated browser.
- E. You need to restart the web server.
- F. You\\ve authenticated as a user who doesn\\t have the Supervisor right to the DA1 server object.

Correct Answer: F

[050-696 PDF Dumps](#)

[050-696 VCE Dumps](#)

[050-696 Study Guide](#)