

**Vendor:** VMware

**Exam Code:** VCP510PSE

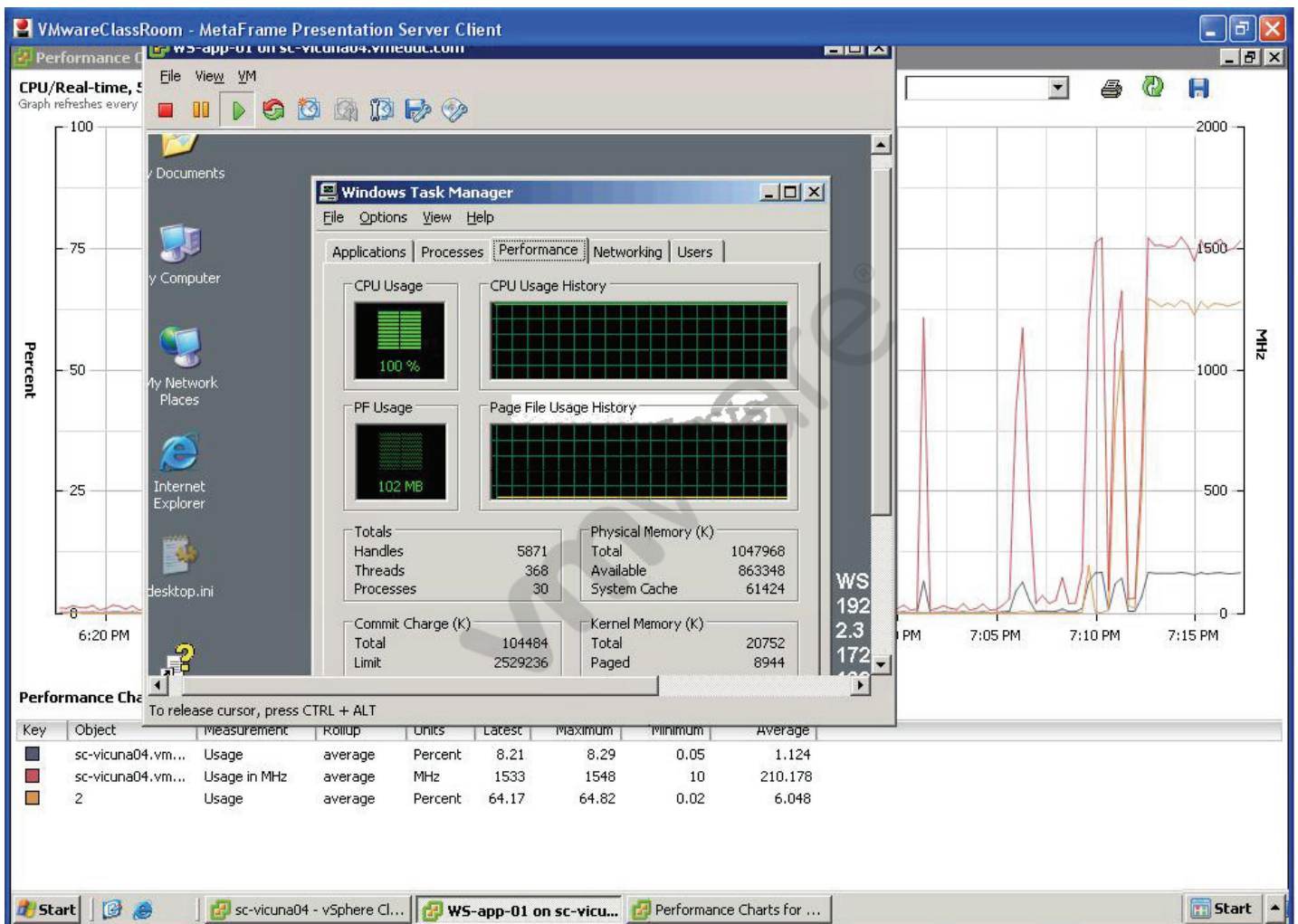
**Exam Name:** VMware Certified Professional 5 - Data Center Virtualization PSE

**Version:** Demo

## Topic 1, Volume A

### QUESTION NO: 1

Click the Exhibit button.



An administrator has deployed a new virtual machine on an ESXi 5.x host. Users are complaining of poor performance on the application running on the virtual machine.

Performance tools display the results shown in the exhibit.

Which two tasks might improve the user experience? (Choose two.)

- A. Add a vCPU to the virtual machine
- B. Remove CPU affinity on the advanced CPU setting of the virtual machine
- C. Migrate the virtual machine to another ESXi host
- D. Remove the limit on the CPU settings of the virtual machine

**Answer: A,D**

**Explanation:**

## QUESTION NO: 2

An administrator notices that when a virtual machine is placed into a resource pool, a warning indicates that the virtual machine will receive a very large percentage of the total shares for memory. Which action can be taken to resolve this problem?

- A. Increase the memory resource allocation to the resource pool.
- B. Increase the share value for the resource pool.
- C. Change the shares setting from custom to high, medium, or low for the virtual machine.
- D. Decrease the memory allocation for the virtual machine.

**Answer: C**

### Explanation:

The Memory Resources panel lets you allocate memory resources for a virtual machine and specify reservations, limits, and shares. Symbolic values Low, Normal, High, and Custom are compared to the sum of all shares of all virtual machines on the server and, on an ESX host, the service console.

By decreasing the memory share of a particular system, it receives less memory out of the total available memory.

## QUESTION NO: 3

An administrator views the Fault Tolerance pane of the Summary tab of a virtual machine and finds that the current status is Not Protected.

What are two vSphere Fault Tolerance states that would cause the virtual machine to not be protected? (Choose two.)

- A. Stopped - Fault Tolerance has been stopped on the secondary virtual machine.
- B. Need Secondary VM - The primary virtual machine is running without a secondary virtual machine and is not protected
- C. Need Primary VM - The secondary virtual machine is running, and a new primary virtual machine cannot be generated.
- D. Disabled - Fault Tolerance is disabled.

**Answer: B,D**

### Explanation:

Reason for Not Protected Status	Description
Starting	Fault Tolerance is in the process of starting the Secondary VM. This message is only visible for a short period of time.
Need Secondary VM [C above]	The Primary VM is running without a Secondary VM, so the Primary VM is currently not protected. This generally occurs when there is no compatible host in the cluster available for the Secondary VM. Correct this by bringing a compatible host online. If there is a compatible host online in the cluster, further investigation might be required. Under certain circumstances, disabling Fault Tolerance and then re-enabling it corrects this problem.
Disabled [A above]	Fault Tolerance is currently disabled (no Secondary VM is running). This happens when Fault Tolerance is disabled by the user or when vCenter Server disables Fault Tolerance after being unable to power on the Secondary VM.
VM not Running	Fault Tolerance is enabled but the virtual machine is powered off. Power on the virtual machine to reach Protected state.

Table 3-2  
Reasons for Primary VM Not Protected Status

Part 3  
Create and Configure Resource Pools (14 questions).

**QUESTION NO: 4**

Which two conditions prevent the application of a host profile to an ESXi 5.x host? (Choose two.)

- A. The host has multiple profiles attached.
- B. The host has not been placed into maintenance mode.
- C. The host is running virtual machines.
- D. The host is an ESXi host.

**Answer: B,C**

**Explanation:**

**QUESTION NO: 5**

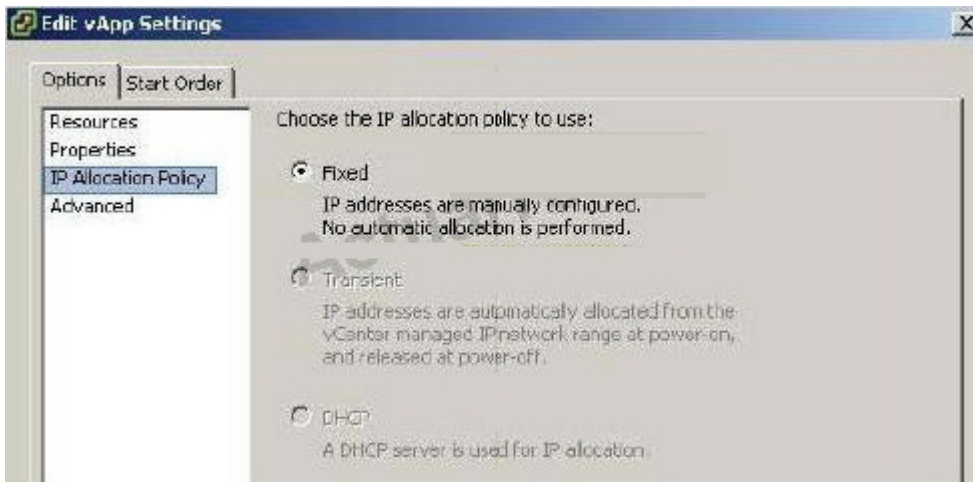
An administrator is editing the IP allocation policy for a vApp. Which three options are available? (Choose three.)

- A. Automatic
- B. Roaming
- C. Transient

- D. DHCP
- E. Fixed

**Answer: C,D,E**

**Explanation:**



#### **QUESTION NO: 6**

ACME Junkmail Incorporated has been utilizing templates in their environment. They are running a 10-node ESXi 5.x Cluster and DRS has not been configured. Several virtual machines have been deployed from this template and successfully powered on, but a newly deployed virtual machine will not power on. There appear to be adequate CPU and Memory resources available on the host.

Which three things can be done to allow more virtual machines to be deployed into the cluster from this template? (Choose three.)

- A. Select a different datastore for the virtual machine
- B. Move the swap file to a different location
- C. Deploy the virtual machine to a different host using the same datastore
- D. Enable DRS on the cluster to balance the virtual machine load out across hosts
- E. Increase the virtual machine memory reservation

**Answer: A,B,E**

**Explanation:**

If you make reservations for your virtual machine's that are equal to the amount of RAM assigned to them, swapping and page sharing does not occur. You can over commit pretty heavily if you are comfortable with poorer performance. If you do not set reservations, ESX host creates a .vswp file

equal to the difference between the amount of physical memory assigned to the virtual machine and the reservation it has. By default, memory reservations are set to 0. If you have a virtual machine with 2GB of memory without a reservation, it creates a 2GB .vswp file when it is powered on. The virtual machine starts using the .vswp file if the server is out of physical RAM. If you set a 1GB reservation, it creates a 1GB .vswp file. The .vswp files are what allows for memory overcommitment.

## QUESTION NO: 7

What are three valid objects to place in a vApp? (Choose three.)

- A. Folders
- B. Hosts
- C. Resource pools
- D. vApps
- E. Virtual machines

**Answer: C,D,E**

**Explanation:**

### Create an Object Inside the vApp in the vSphere Client

Within a vApp, you can create a new virtual machine, resource pool, or another vApp.

#### Procedure

- 1 In the inventory, select the vApp in which you want to create the object machine.
- 2 Select the menu option to create a specific object.

Menu Option	Description
Inventory > vApp > New Virtual Machine	Creates a new virtual machine inside the vApp. Complete the Create New Virtual Machine wizard. See Creating a Virtual Machine in the vSphere Client for instructions on creating a new virtual machine.
Inventory > vApp > New Resource Pool	Adds a resource pool inside the vApp. Complete the Create Resource Pool window.
Inventory > vApp > New vApp	Creates a new vApp inside the currently selected vApp. Complete the New vApp wizard. See Create a vApp in the vSphere Client for instructions on creating a new vApp.

[http://pubs.vmware.com/vsphere-50/index.jsp?topic=/com.vmware.vsphere.vcenterhost.doc\\_50/GUID-3B5AF2B1-C534-4426-B97A-D14019A8010F.html](http://pubs.vmware.com/vsphere-50/index.jsp?topic=/com.vmware.vsphere.vcenterhost.doc_50/GUID-3B5AF2B1-C534-4426-B97A-D14019A8010F.html)

### QUESTION NO: 8

Which three Storage I/O Control conditions might trigger the Non-VI workload detected on the datastore alarm? (Choose three.)

- A. The datastore is connected to an ESX/ESXi 4.0 host that does not support Storage I/O Control.
- B. The datastore is on an array that is performing system tasks such as replication.
- C. The datastore is utilizing active/passive multipathing or NMP (Native Multi-Pathing).
- D. The datastore is storing virtual machines with one or more snapshots.
- E. The datastore is connected to an ESX/ESXi 4.0 host that is not managed by vCenter.

**Answer: A,B,E Explanation:**

[http://kb.vmware.com/selfservice/microsites/search.do?language=en\\_US&cmd=displayKC&externalId=1020651](http://kb.vmware.com/selfservice/microsites/search.do?language=en_US&cmd=displayKC&externalId=1020651)

[http://pubs.vmware.com/vsphere-50/topic/com.vmware.vsphere.troubleshooting.doc\\_50/GUID-38F95285-DB4F-462F-AFD7-0F4D812B085F.html](http://pubs.vmware.com/vsphere-50/topic/com.vmware.vsphere.troubleshooting.doc_50/GUID-38F95285-DB4F-462F-AFD7-0F4D812B085F.html)

### QUESTION NO: 9

An administrator has just finished deploying a vApp for a web service. What three options are available to the administrator for IP allocation within the vApp? (Choose three.)

- A. Transient
- B. Fixed
- C. DHCP
- D. Bridged
- E. NAT

**Answer: A,B,C**

**Explanation:**

Option Description



Option	Description
Fixed	IP addresses are manually configured. No automatic allocation is performed.
Transient	IP addresses are automatically allocated using IP pools from a specified range when the vApp is powered on. The IP addresses are released when the appliance is powered off.
DHCP	A DHCP server is used to allocate the IP addresses. The addresses assigned by the DHCP server are visible in the OVF environments of virtual machines started in the vApp.

## QUESTION NO: 10

An administrator is working to implement Storage Profiles in their environment.

Which two ways can storage capabilities be generated? (Choose two.)

- A. They are generated by Datastore Clusters as LUNs are added to the cluster.
- B. They are automatically determined by the Storage Profile when it is created.
- C. They can be retrieved from the array through the VMware APIs for Storage Awareness (VASA).
- D. They can be manually generated by the administrator.

**Answer: C,D**

**Explanation:**

### Understanding Storage Capabilities

A storage capability outlines the quality of service that a storage system can deliver. It is a guarantee that the storage system can provide a specific set of characteristics for capacity, performance, availability, redundancy, and so on.

If a storage system uses Storage APIs – Storage Awareness, it informs vCenter Server that it can guarantee a specific set of storage features by presenting them as a storage capability. vCenter Server recognizes the capability and adds it to the list of storage capabilities in the Manage Storage Capabilities dialog box. Such storage capabilities are system-defined. vCenter Server assigns the system-defined storage capability to each datastore that you create from that storage system.

### NOTE:

Because multiple system capabilities for a datastore are not supported, a datastore that spans several extents assumes the system capability of only one of its extents.

You can create user-defined storage capabilities and associate them with datastores. You should associate the same user-defined capability with datastores that guarantee the same level of storage capabilities. You can associate a user-defined capability with a datastore that already has a system-defined capability. A datastore can have only one system-defined and only one user-



defined capability at a time.

**QUESTION NO: 11**

Which VMware solution uses the security of a vSphere implementation and provides linked-clone technology to virtual desktops?

- A. VMware ACE
- B. VMware View
- C. VMware Workstation
- D. VMware ThinApp

**Answer: B**

**Explanation:**

Reference: <http://www.vmware.com/files/pdf/VMware-View-4-Composer-DS-EN.pdf> (page 1, last paragraph)

**QUESTION NO: 12**

Which two conditions will prevent a virtual machine from being successfully migrated using Storage vMotion? (Choose two.)

- A. The virtual machine has an RDM.
- B. The virtual machine has Fault Tolerance enabled.
- C. The virtual machine is running on a vSphere 5.x Standard host.
- D. The virtual machine has a disk stored on an NFS datastore.

**Answer: B,C**

**Explanation:**

**QUESTION NO: 13**

Under which two conditions can vStorage APIs for Array Integration (VAAI) provide a performance benefit? (Choose two.)

- A. When a virtual disk has VMDK files stored on an NFS datastore.

- B. When a virtual disk is created using the New Virtual Machine wizard.
- C. When cloning a virtual machine with snapshots.
- D. When a virtual disk is deleted.

**Answer: A,D**

**Explanation:**

#### **QUESTION NO: 14**

An administrator is enabling Enhanced vMotion Compatibility (EVC) in a DRS cluster. The administrator wants only hosts with the newest Intel processors added to the cluster.

Which setting satisfies this requirement?

- A. The baseline with the most CPUs listed
- B. The baseline with the fewest CPUs listed
- C. Any baseline that contains Future Intel processors
- D. Create a new baseline and add only the latest processor family

**Answer: D**

Reference: <http://www.virtualizationadmin.com/articles-tutorials/vmware-esx-and-vsphere-articles/vmotion-drs-high-availability/enhanced-vmotion-compatibility-primer.html> (8th para)

#### **QUESTION NO: 15**

Which two conditions must exist on all hosts in the cluster if Enhanced vMotion Compatibility (EVC) is used? (Choose two.)

- A. The cluster must be enabled for DRS.
- B. All hosts in the cluster must be running ESX/ESXi 3.5 Update 2 or later.
- C. All hosts in the cluster must have hardware virtualization support enabled.
- D. The cluster must be enabled for HA.

**Answer: B,C**

**Explanation:**

#### **QUESTION NO: 16**

Users are experiencing performance issues when updating their database hosted on a virtual machine. The administrator determines that disk I/O is high across one of the HBAs on the ESXi host containing the virtual machine.

What is the action will most likely correct the issue without significantly impacting other users or datastores?

- A. Manually configure the disk multipathing policy to Round Robin for the datastore
- B. Migrate the virtual machine to an NFS datastore using Storage vMotion
- C. Use Storage vMotion to migrate the virtual machine to a new VMFS5 datastore
- D. Map additional LUNs to the ESXi host and extend the datastores

**Answer: A**

**Explanation:**

#### **QUESTION NO: 17**

An administrator takes a vSphere snapshot of a virtual machine and applies an OS update. After confirming the update the administrator cannot enable Fault Tolerance on the virtual machine and suspects there are snapshots that have not been consolidated.

Which two operations can the administrator perform to verify consolidation is needed? (Choose two.)

- A. Expose the Needs Consolidation column in the virtual machines tab of the host.
- B. Browse the datastore containing the vmdk files and look for files with the "-delta.vmdk" extension.
- C. Expose the Needs Consolidation column in the virtual machine summary tab.
- D. Select and run the vSphere Cluster HealthCheck from the right-click menu of the cluster object.

**Answer: A,B**

**Explanation:**

#### **QUESTION NO: 18**

An administrator has created a virtual machine that will be accessed from a public kiosk. Management has requested that the virtual machine be reset to a known state once a week or on demand if requested.

Which method is the simplest way to meet this requirement?

- A. Configure the storage array to be vSphere aware and script routine array snapshot restores of the datastore.
- B. Implement a 3rd party imaging server and PXE boot the virtual machine off a static image.
- C. Set the VMDKs of the virtual machine to be Independent-Nonpersistent and schedule restarts of the virtual machine.
- D. Create Nonpersistent disks for the virtual machine and set the guest OS to reboot once a week.

**Answer: C**

**Explanation:**

### **QUESTION NO: 19**

What are three true statements about quiescing virtual machine snapshots? (Choose three.)

- A. vSphere snapshot quiescing only occurs on Windows guest OSes.
- B. The quiescing operation is automatic with any snapshot.
- C. The quiescing operation varies by guest OS.
- D. Quiescing should occur before array-based snapshots to ensure consistency.
- E. VMware Tools is required for quiescing to be successful.

**Answer: C,D,E**

**Explanation:**

### **QUESTION NO: 20**

An administrator has deployed vCenter Data Recovery and wants the largest possible de-duplication store. Which three storage options can be used? (Choose three.)

- A. Two CIFS shares
- B. Two RDMS on a FCP array
- C. One NFS mount on the ESXi host and one RDMS on an iSCSI array
- D. One CIFS share and one FCP RDM
- E. Two NFS mounts on the ESXi host

**Answer: B,C,E**

**Explanation:**

**QUESTION NO: 21**

An administrator has recently upgraded their Update Manager infrastructure to vSphere 5.x. Several hosts and virtual machines have not been upgraded yet.

Which vSphere component when upgraded will have the least impact to the existing environment?

- A. Virtual Machine Hardware
- B. ESX Hosts
- C. VMFS datastores
- D. VMware Tools

**Answer: D**

**Explanation:**

**QUESTION NO: 22**

An administrator is using Update Manager 5.x to update virtual appliances in a vSphere environment. The environment is using the vCenter Server Virtual Appliance (vCSA).

What would cause the remediation to fail?

- A. Updating of the appliance can only be done if the vCenter Server Virtual Appliance (vCSA) has been put into Maintenance Mode.
- B. Remediation must be configured on the Appliance Administration page before use.
- C. Remediation of the vCenter Server Virtual Appliance (vCSA) with Update Manager is not supported.
- D. Remediation requires the hosts to be connected to vCenter using an IPv4 address.

**Answer: C**

**Explanation:**

**QUESTION NO: 23**

An administrator is working to update the hosts and virtual machines in a vSphere 5.x deployment using Update Manager Baselines. Other than host patches, which three items require a separate procedure or process to update? (Choose three.)

- A. Operating system patches
- B. Virtual Appliance updates

- C. Virtual Machine Virtual Hardware upgrades
- D. VMware Tools on machines without VMware Tools already installed
- E. Application patches within the virtual machine

**Answer: A,D,E**

**Explanation:**

#### **QUESTION NO: 24**

An administrator selects the Profile Compliance tab of a vSphere cluster, then selects Check Compliance Now. Which features requirements are not checked by this?

- A. vMotion
- B. Fault Tolerance
- C. DRS
- D. Host Profiles

**Answer: D**

**Explanation:**

#### **QUESTION NO: 25**

An administrator is troubleshooting an ESXi 5.x host and needs to export diagnostic information. The host is currently managed by a vCenter Server instance.

Which two ways can the information be gathered using the vSphere Client? (Choose two.)

- A. Select Home. Under Administration, click System Logs and click the Export System Logs button. Select the affected ESXi host. Select Select All. Select a location and click Finish.
- B. In the vSphere Client, select the affected ESXi host. Right-click the host and select Export Diagnostic Data. Select a location and click OK.
- C. Log in to the ESXi host locally, Select Export System Logs.
- D. In the vSphere Client, select the affected ESXi host. Select File, Export and Export System Logs. Select Select All. Select a location and click Finish.

**Answer: A,D**

**Explanation:**

**QUESTION NO: 26**

An ESXi 5.x host displays a warning icon in the vSphere console and its summary page lists a configuration issue "SSH for the host has been enabled." What are two ways to clear this warning? (Choose two.)

- A. Using the Security Profile pane of the Configuration tab in the vSphere Client
- B. Using the Direct Console User Interface (DCUI)
- C. Using the Advanced Settings pane of the Configuration tab in the vSphere Client
- D. Using the Networking pane of the Configuration tab in the vSphere Client

**Answer: A,B**

**Explanation:**

**QUESTION NO: 27**

vCenter reports a connectivity problem with a ESXi 5.x host that is not a member of a cluster. An administrator attempts to connect directly to the host using the vSphere Client but fails with the message "An unknown connection error occurred." Virtual machines running on the host appear to be running and report no problem.

What two methods would likely resolve the issue without affecting the virtual machines? (Choose two.)

- A. Enter the service mgmt-vmware restart command from either SSH or local CLI
- B. Select Restart Management Agents in the Direct Console User Interface (DCUI)
- C. Select Reboot Host in the Direct Console User Interface (DCUI)
- D. Enter the services.sh restart command from either SSH or the local CLI

**Answer: B,D**

**Explanation:**

**QUESTION NO: 28**

Click the Exhibit button.



```

3:58:20pm up 15:52, 300 worlds, 7 VMs, 14 vCPUs; CPU load average: 1.07, 1.10, 1.09
PCPU USED(%): 94 94 93 93 92 86 90 89 AVG: 91
PCPU UTIL(%): 93 93 93 93 93 87 89 89 AVG: 91

```

ID	GID	LWID	NAME	NWLD	%USED	%RUN	%SYS	%WAIT	%VMWAIT	%RDY	%IDLE	%OVRLP	%CSTP	%MLMTD	%SWPWT
30172	30172	40901	dsaojose-vm50	5	0.58	0.52	0.06	497.01	0.15	3.63	96.71	0.01	0.00	0.00	0.00
31109	31109	42222	Dev_App_01	5	60.98	60.30	0.04	395.71	0.00	44.19	0.00	0.08	0.00	0.00	0.00
31112	31112	42228	Dev_SQL_01	5	62.93	63.58	0.02	398.20	0.00	38.52	0.00	0.08	0.00	0.00	0.00
31115	31115	42234	Dev_Web_01	5	67.16	66.76	0.02	395.02	0.00	35.66	0.00	0.10	0.00	0.00	0.00
31275	31275	42457	FileServer01	12	470.63	471.52	0.05	608.00	210.90	113.49	0.00	1.00	9.28	0.00	0.74
31281	31281	42491	jonathanm-SQL20	5	1.83	1.79	0.05	495.49	0.00	3.86	95.39	0.01	0.00	0.00	0.00
31886	31886	43286	victim-001	5	60.60	60.34	0.01	393.30	0.00	46.82	0.00	0.08	0.00	0.00	0.00

ACME Catering Services is using esxtop to troubleshoot a performance problem with one of their ESXi 5.x hosts. Host disconnections from vCenter Server as well as sluggish performance when performing tasks on the host have been observed. Based on the output in the exhibit, how many vCPU's have been assigned to FileServer01?

- A. 1
- B. 2
- C. 4
- D. 8

**Answer: D**

**Explanation:**

**QUESTION NO: 29**

An administrator notices that log files kept on an ESXi 5.x host are being rotated very quickly, inhibiting the troubleshooting of an issue. Which two configuration changes will resolve the issue? (Choose two.)

- A. Configure syslog to send the logs a syslog server
- B. Increase the number of logs kept
- C. Increase the logging level
- D. Increase the size of the partition where log files are stored

**Answer: A,B**

**Explanation:**

**QUESTION NO: 30**

A series of Auto Deploy ESXi 5.x hosts which utilize vSphere Standard Switches are unable to boot. In prior testing, all of the hosts were able to boot successfully.

Which two conditions might cause this issue? (Choose two.)

- A. The Hosts are unable to connect to the SAN.
- B. The TFTP server is down.
- C. The DNS server is down.
- D. The DHCP server is down.

**Answer: B,D**

**Explanation:**

### **QUESTION NO: 31**

An administrator wants to monitor the health status of an ESXi 5.x host. However, when the administrator clicks the Hardware Status tab the following error is displayed.

This program cannot display the webpage

What might cause this problem?

- A. The VMware VirtualCenter Management Webservices Service is not started.
- B. The required plug-in is not enabled.
- C. The VMware ESXi Management Webservices Service is not started
- D. The name of the vCenter Server system could not be resolved.

**Answer: A**

**Explanation:**

### **QUESTION NO: 32**

An iSCSI array is being added to a vSphere 5.x implementation. An administrator wants to verify that all IP storage VMkernel interfaces are configured for jumbo frames.

What are two methods to verify this configuration? (Choose two.)

- A. Run the `esxcli network ip interface list` command
- B. Run the `esxcli network ip interface list` command
- C. Ensure that the Enable Jumbo Frames box is checked in the VMkernel interface properties in the vSphere client
- D. Ensure that the MTU size is set correctly in the VMkernel interface properties in the vSphere client

**Answer: A,D**

**Explanation:**

**QUESTION NO: 33**

An administrator has configured a vSphere Distributed Switch to send all network traffic to a collector virtual machine for analysis. However, after checking the collector virtual machine several hours later the administrator finds that no data has been collected. vSphere 5.x has been deployed in the datacenter.

Which two items below could be causing this issue? (Choose two.)

- A. The source virtual machine does not have Promiscuous Mode enabled.
- B. The source and target virtual machines are not both be on the same vSphere Distributed Switch.
- C. The port group or distributed does not have Promiscuous Mode enabled.
- D. The port group or distributed port does not have NetFlow enabled.

**Answer: B,D**

**Explanation:**

**QUESTION NO: 34**

A vSphere 5 implementation consists of a fully automated DRS cluster with two ESXi 5.x hosts with the following vSphere Standard Switch configuration.

1. Switch A. three vmnics, one port group named sFTP-PG
2. Switch B. two vmnic, one port group named Web-PG
3. All vmnics are trunked to the same physical switch.

DRS has been configured with an anti-affinity rule for all virtual machines in the Web-PG so that no more than half of the virtual machines run on any given host. The virtual machines on WebPG are experiencing significant network latency. The network team has determined that a performance bottleneck is occurring at the ESXi host level.

Which solution will require the least amount of administrative work and the least amount of service interruption?

- A. Migrate Web-PG to Switch A and sFTP-PG to Switch B on each host

- B. Move a vmnic from Switch A to Switch B on each host
- C. Convert the three Switch Bs to a single vSphere Distributed Switch
- D. Use vMotion to redistribute some of the VMs in Web-PG to a different ESXi host

**Answer: B**

**Explanation:**

#### **QUESTION NO: 35**

A user attempts a remote SSH connection to a newly-installed ESXi 5.x host to execute some commands. The SSH connection attempt fails, though the user is able to receive a ICMP ping back from the host. What must the administrator do to enable SSH? (Choose two.)

- A. Enable root logon on the ESXi server.
- B. Open the SSH port on the ESXi firewall.
- C. Start the SSH service on the ESXi server.
- D. Create a local user on the ESXi server.

**Answer: B,C**

**Explanation:**

#### **QUESTION NO: 36**

An administrator is setting up vMotion in a vSphere environment. A migration is run to test the configuration, but fails.

What could the administrator do to resolve the issue?

- A. Ensure the VMkernel port group is configured for Management Traffic.
- B. Enable VMkernel port group for the vSphere cluster.
- C. Ensure the vMotion enabled adaptors configured for the same subnet.
- D. Use a vDS instead of a standard switch.

**Answer: C**

**Explanation:**

#### **QUESTION NO: 37**

An administrator is unable to connect a vSphere Client to an ESXi 5.x host.

Which option can be selected from the direct console to restore connectivity without disrupting running virtual machines?

- A. Restore the Standard Switch from the ESXi host.
- B. Restart the Management Agents from the vSphere client.
- C. Restart the Management Agent from the ESXi host
- D. Disable the Management Network from the vSphere client.

**Answer: C**

**Explanation:**

#### **QUESTION NO: 38**

An administrator receives a complaint that a virtual machine is performing poorly. The user attributes the issue to poor storage performance. If the storage array is the bottleneck, which two counters would be higher than normal? (Choose two.)

- A. Average ESXi VMKernel latency per command, in milliseconds
- B. Average ESXi highest latency, in milliseconds
- C. Average virtual machine operating system latency per command, in milliseconds
- D. Number of SCSI reservation conflicts per second

**Answer: B,C**

**Explanation:**

#### **QUESTION NO: 39**

An administrator must decommission a datastore.

Before unmounting the datastore, which three requirements must be fulfilled? (Choose three.)

- A. No virtual machines reside on the datastore.
- B. The datastore is not used for vSphere HA heartbeat.
- C. No registered virtual machines reside on the datastore.
- D. The datastore must not have any extents.
- E. The datastore must not be part of a datastore cluster.

**Answer: A,B,E**

**Explanation:**

## Unmount VMFS or NFS Datastores

When you unmount a datastore, it remains intact, but can no longer be seen from the hosts that you specify. The datastore continues to appear on other hosts, where it remains mounted.

Do not perform any configuration operations that might result in I/O to the datastore while the unmount is in progress.

---

**NOTE** vSphere HA heartbeating does not prevent you from unmounting the datastore. If a datastore is used for heartbeating, unmounting it might cause the host to fail and restart any active virtual machine. If the heartbeating check fails, the vSphere Client displays a warning.

---

### Prerequisites

Before unmounting VMFS datastores, make sure that the following prerequisites are met:

- No virtual machines reside on the datastore.
- The datastore is not part of a datastore cluster.
- The datastore is not managed by Storage DRS.
- Storage I/O control is disabled for this datastore.
- The datastore is not used for vSphere HA heartbeating.

### QUESTION NO: 40

An administrator is informed that there will be a storage maintenance window and that failovers may occur.

What is the expected length of time that a Windows 2008 virtual machine storage I/O will pause during a path failover?

- A. 0 to 30 seconds
- B. 90 to 120 seconds
- C. 60 to 90 seconds
- D. 30 to 60 seconds

**Answer: D**

**Explanation:**

### QUESTION NO: 41

A company wants to increase disk capacity for their vSphere environment. Management mandates that:

1. vMotion must work in this environment.
2. The existing LAN infrastructure must be used.

Which storage option best meets the company objectives?

- A. iSCSI
- B. Fibre Channel
- C. SATA
- D. NFS

**Answer: D**

**Explanation:**

#### **QUESTION NO: 42**

Which resource management technique can be used to relieve a network bottleneck caused by a virtual machine with occasional high outbound network activity?

- A. Convert the switch from a vSphere Standard Switch to a vSphere Distributed Switch.
- B. Create a new portgroup for the virtual machine and enable traffic shaping.
- C. Apply traffic shaping to the other virtual machines in the same port group.
- D. Apply traffic shaping to the virtual machine with high activity.

**Answer: B**

**Explanation:**

#### **QUESTION NO: 43**

An administrator has determined that storage performance to a group of virtual machines is reduced during peak activity. The virtual machines are located in a VMFS datastore called Production1 on an active-active storage array. The ESXi 5.x host running the virtual machines is configured with an MRU multipathing policy.

Which two actions can be taken to improve the storage performance of these virtual machines? (Choose two.)

- A. Add virtual storage, create a VMFS datastore called Production2 on the new storage, and then migrate some of the virtual machines from Production1 to Production2.
- B. Change the storage multipathing policy to Round Robin.
- C. Add physical storage, create a VMFS datastore called Production2 on the new storage, and then migrate some of the virtual machines from Production1 to Production2.
- D. Change the storage multipathing policy to Fixed with default settings.



**Answer: B,C**

**Explanation:**

**QUESTION NO: 44**

Which of these factors indicates a high likelihood that the performance of a virtual machine disk is being constrained by disk I/O?

- A. A large number of commands issued
- B. A high device latency value
- C. A high disk used value
- D. A large number of kilobytes read and written

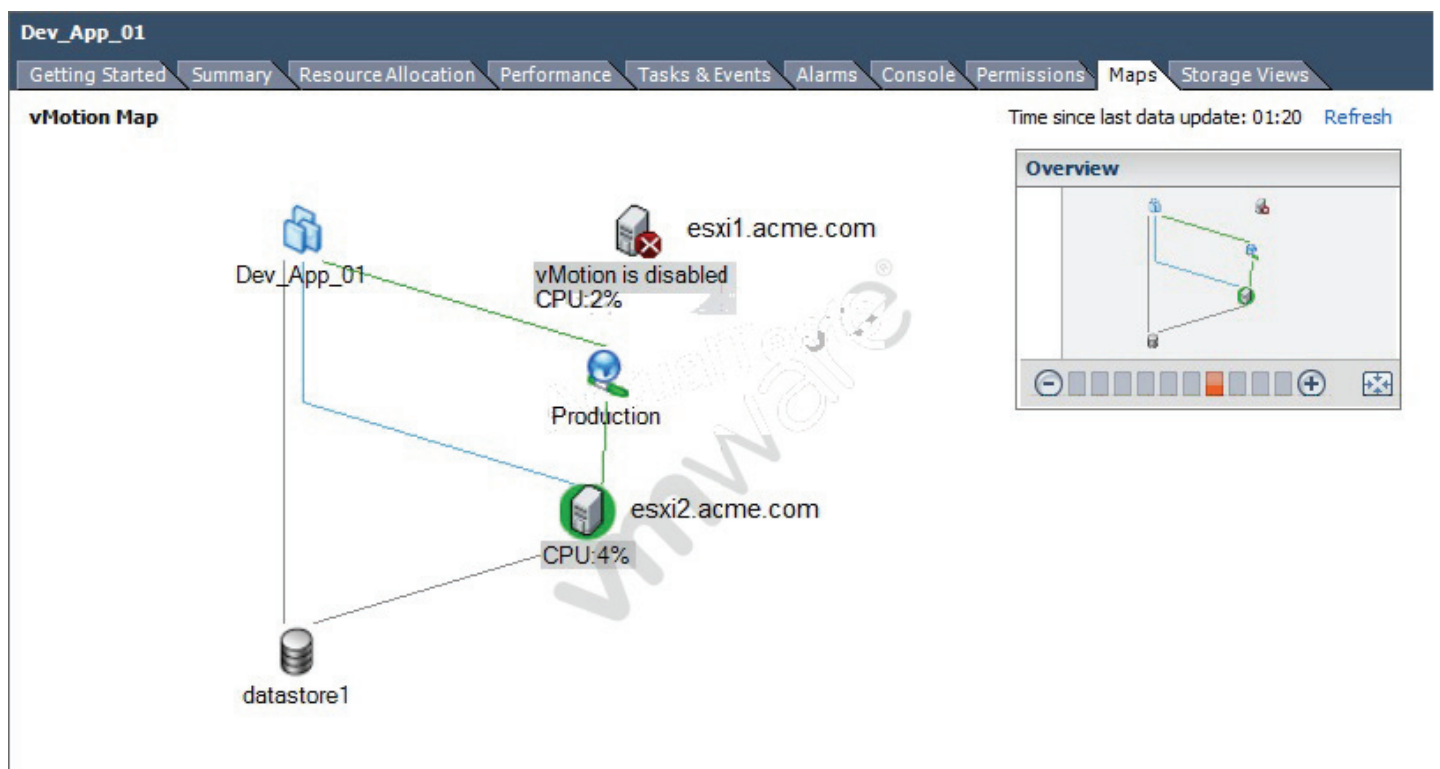
**Answer: B**

**Explanation:**

Disk performance bottlenecks are usually due to either Disk queue length or Disk Latency

**QUESTION NO: 45**

Click the Exhibit button.



An administrator is configuring vMotion in their environment. As part of the implementation, an administrator is examining resource mapping for virtual machines.

What is a likely cause of the error shown in the exhibit?

- A. vMotion has been disabled because there are no other hosts in the cluster with vMotion enabled.
- B. vMotion has not been enabled on the Production port group.
- C. The administrator has not created a Management network.
- D. vMotion has not been enabled on a VMkernel port group.

**Answer: D**

**Explanation:** This only shows up in the Maps when the vMotion OPTION is not checked in the PORT group – hence vMotion is DISABLED!

Other Notes: vMotion doesn't need a "production" network it can use any network. It also should not be using a "production" network. Datastore has nothing to do with vMotion in this diagram – this is Maps – it would give a vMotion error if it wasn't on the datastore not a vMotion disabled..

#### **QUESTION NO: 46**

Which two circumstances might cause a DRS cluster to become invalid? (Choose two.)

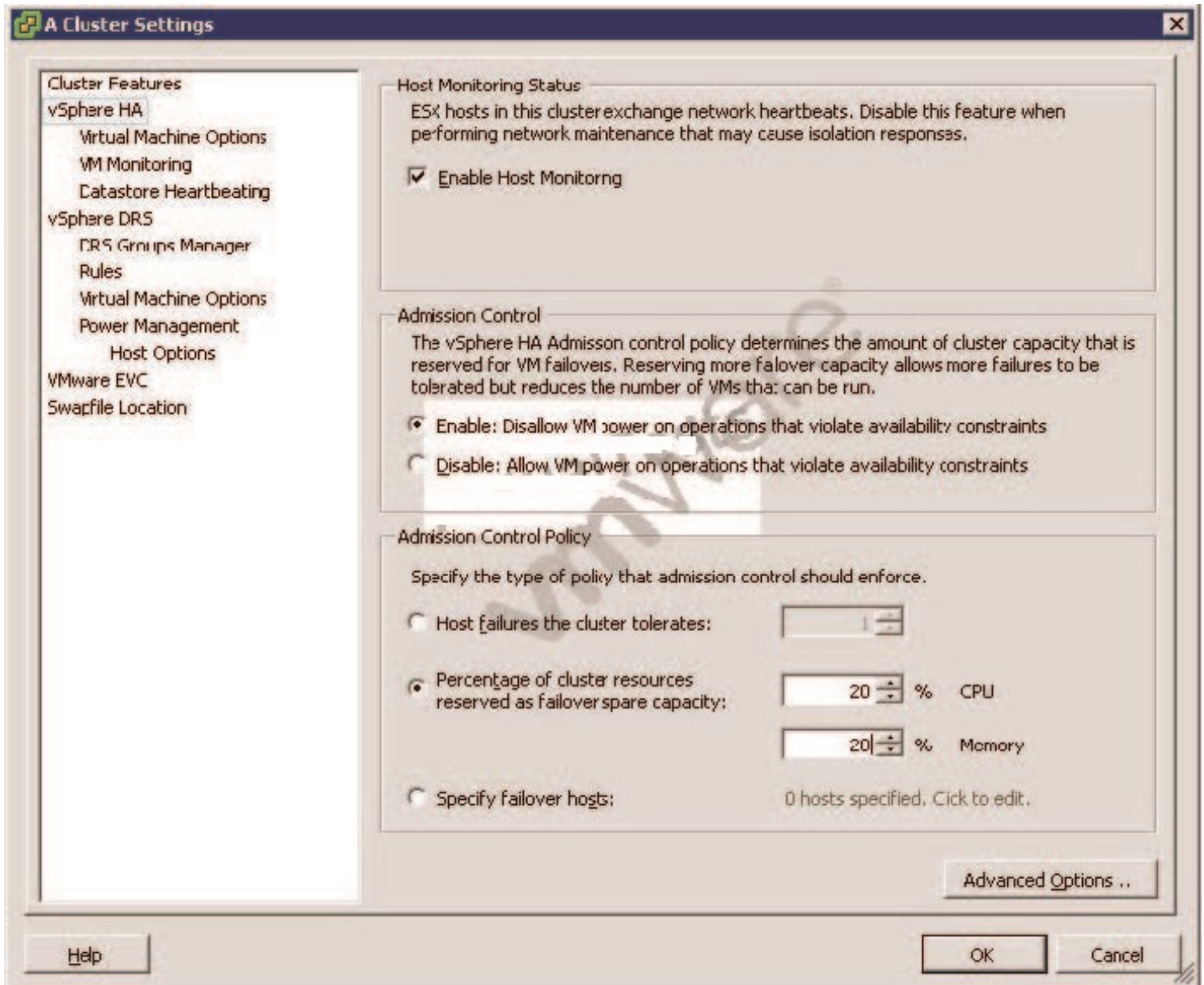
- A. DRS has been disabled on one or more ESXi hosts.
- B. An ESXi host has been removed from the cluster.
- C. A migration on a virtual machine is attempted while the virtual machine is failing over.
- D. Virtual machines have been powered on from a vSphere Client connected directly to an ESXi host.

**Answer: B,D**

**Explanation:**

#### **QUESTION NO: 47**

Click the Exhibit button.



An administrator has a DRS/HA cluster with five ESXi 5.x hosts. When the administrator tries to start a new Web server virtual machine, an error is displayed saying insufficient resources exist for HA.

Based on the HA configuration in the exhibit, which two changes can resolve the issue? (Choose two.)

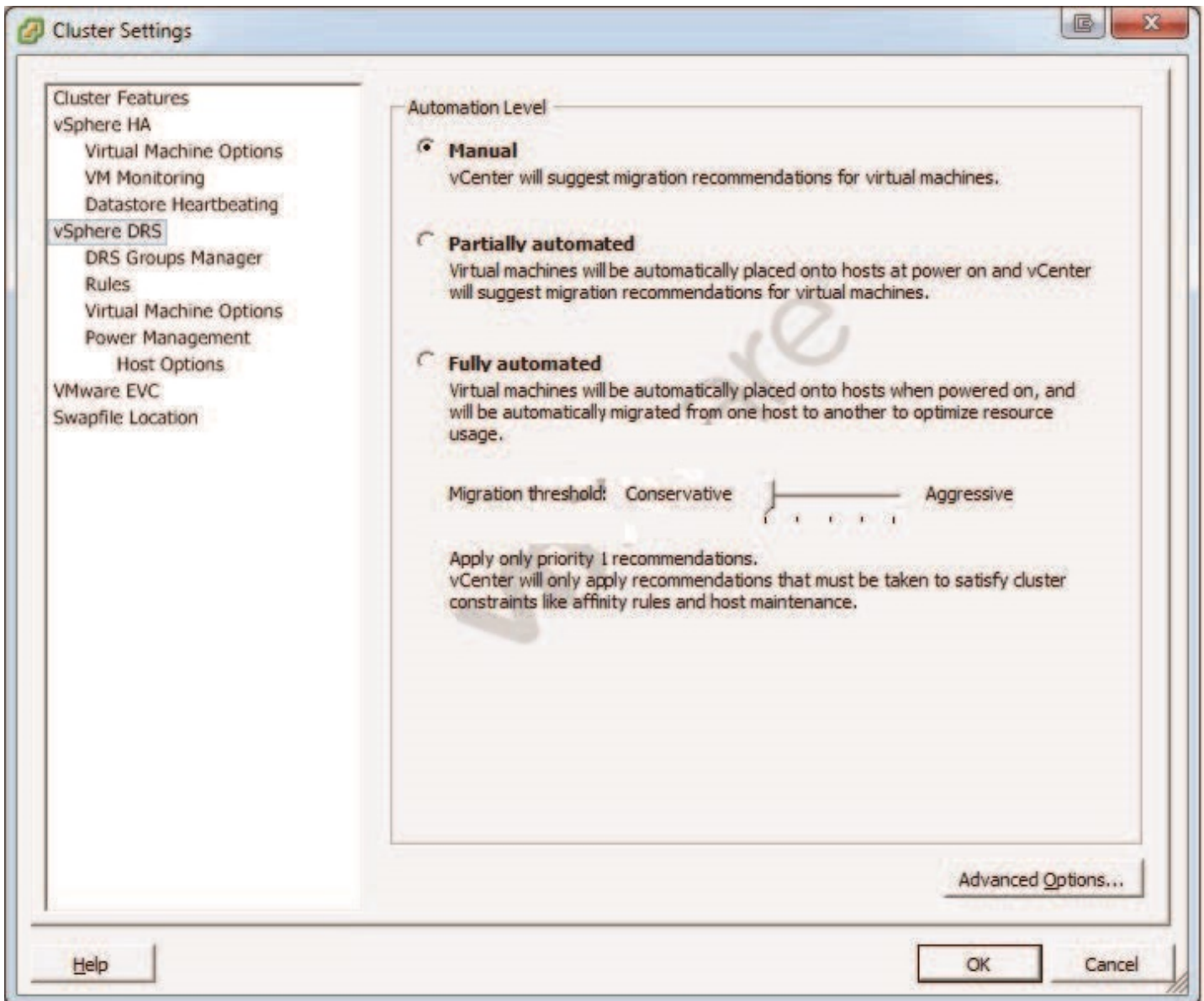
- A. Shut down one or more virtual machines on the cluster.
- B. Set VM Restart Priority to Disabled for the Web server.
- C. Set Host Isolation response to Shut down.
- D. Suspend one or more virtual machines in the cluster.

**Answer: A,D**

**Explanation:**

**QUESTION NO: 48**

Click the Exhibit button.



An administrator is applying patches to a batch of ESXi 5.x hosts in an under-allocated HA/DRS cluster. An attempt is made to place the host into maintenance mode, but the progress has stalled at 2%. DRS is configured as shown in the exhibit. Of the four choices below, two would effectively resolve this issue.

Which two steps could be taken to correct the problem? (Choose two.)

- A. Enable VMware EVC.
- B. Set the virtual machines on the host to Fully Automated.
- C. Shut down the virtual machines on the host.
- D. Move the virtual machine swap file off the local datastore.

**Answer: B,C**

**Explanation:**

**QUESTION NO: 49**

An administrator is configuring Storage DRS in their environment. The Ds. Storage DRS has been enabled, but is showing as disabled on several virtual machine disks in the datastore cluster.

Which two conditions would cause this error to occur? (Choose two.)

- A. The virtual machine is stored on a VMFS 3 volume.
- B. One or more virtual machines have Persistent disks.
- C. The virtual machine is stored on a NFS datastore.
- D. The virtual machine is stored on a datastore with a 2mb block size.

**Answer: A,B**

**Explanation:**

#### **QUESTION NO: 50**

An administrator finds that vMotion and Storage vMotion operations do not succeed on a virtual machine. The virtual machine has been configured with N\_Port ID Virtualization. The virtual machine has two data RDMs, one using a RAID5 LUN and one using a RAID0+1 LUN. The mapping file for the RAID5 LUN was created on the same datastore as the virtual machine, and the mapping file for the RAID0+1 LUN was placed in a datastore used for production data virtual disks.

Which two statements are true about this configuration? (Choose two.)

- A. Storage vMotion cannot be used unless both mapping files are placed on the same datastore.
- B. vMotion cannot be used unless both mapping files are placed on the same datastore.
- C. vMotion cannot be used with RDMs.
- D. Storage vMotion cannot be used with NPIV.

**Answer: B,D**

**Explanation:**

## NPIV Capabilities and Limitations

Learn about specific capabilities and limitations of the use of NPIV with ESXi.

ESXi with NPIV supports the following items:

- NPIV supports vMotion. When you use vMotion to migrate a virtual machine it retains the assigned WWN.

If you migrate an NPIV-enabled virtual machine to a host that does not support NPIV, VMkernel reverts to using a physical HBA to route the I/O.

- If your FC SAN environment supports concurrent I/O on the disks from an active-active array, the concurrent I/O to two different NPIV ports is also supported.

When you use ESXi with NPIV, the following limitations apply:

- Because the NPIV technology is an extension to the FC protocol, it requires an FC switch and does not work on the direct attached FC disks.
- When you clone a virtual machine or template with a WWN assigned to it, the clones do not retain the WWN.
- NPIV does not support Storage vMotion.
- Disabling and then re-enabling the NPIV capability on an FC switch while virtual machines are running can cause an FC link to fail and I/O to stop.

### QUESTION NO: 51

A company has converted several physical machines to virtual machines but are seeing significant performance issues on the converted machines. The host is configured with sufficient memory and storage does not appear to be a bottleneck. Which metric can be checked to determine if CPU contention exists on an ESXi 5.x host?

- A. %RUN
- B. %WAIT
- C. %USED
- D. %RDY

**Answer: D**

**Explanation:**



## QUESTION NO: 52

Which three statements regarding Network I/O Control (NIOC) are accurate? (Choose three.)

- A. NIOC enforces traffic bandwidth limits on the overall vDS set of dvUplinks.
- B. NIOC limits maximum throughput control on connected virtual machines.
- C. Load based teaming efficiently uses a vDS set of dvUplinks for network capacity.
- D. Isolation provides priority to any one traffic flow.
- E. Relative shares fairly allocates available bandwidth among multiple flows.

**Answer: A,C,E**

**Explanation:**

## QUESTION NO: 53

Which three requirements must be met in order to use Storage I/O Control? (Choose three.)

- A. The datastore must contain multiple VMFS extents.
- B. The datastore must contain a single NFS volume.
- C. The datastore must not include virtual machines with snapshots.
- D. The datastore must be managed by a single vCenter Server.
- E. Array-based automated storage tiering must be explicitly certified.

**Answer: B,D,E**

**Explanation:**

Extents are only a single extent – not multiples. Also, because NFS is not VMFS it does not use extents. You grow the NFS from the actual NAS appliance itself with extents.

## Storage I/O Control Requirements

Storage I/O Control has several requirements and limitations.

- Datastores that are Storage I/O Control-enabled must be managed by a single vCenter Server system.
- Storage I/O Control is supported on Fibre Channel-connected, iSCSI-connected, and NFS-connected storage. Raw Device Mapping (RDM) is not supported.
- Storage I/O Control does not support datastores with multiple extents.
- Before using Storage I/O Control on datastores that are backed by arrays with automated storage tiering capabilities, check the *VMware Storage/SAN Compatibility Guide* to verify whether your automated tiered storage array has been certified to be compatible with Storage I/O Control.



**QUESTION NO: 54**

What number of IOPS should be used with Storage I/O Control to limit disk throughput to roughly 10 MBps if the guest application writes 64KB blocks?

- A. 320
- B. 160
- C. 240
- D. 64

**Answer: B**

**Explanation:**

**QUESTION NO: 55**

It appears that a single vCPU virtual machine in a resource pool called Production is having performance problems because it does not have enough CPU resources available.

Which two methods can be used to improve performance and reduce CPU contention of this virtual machine while maintaining compatibility with DRS? (Choose two.)

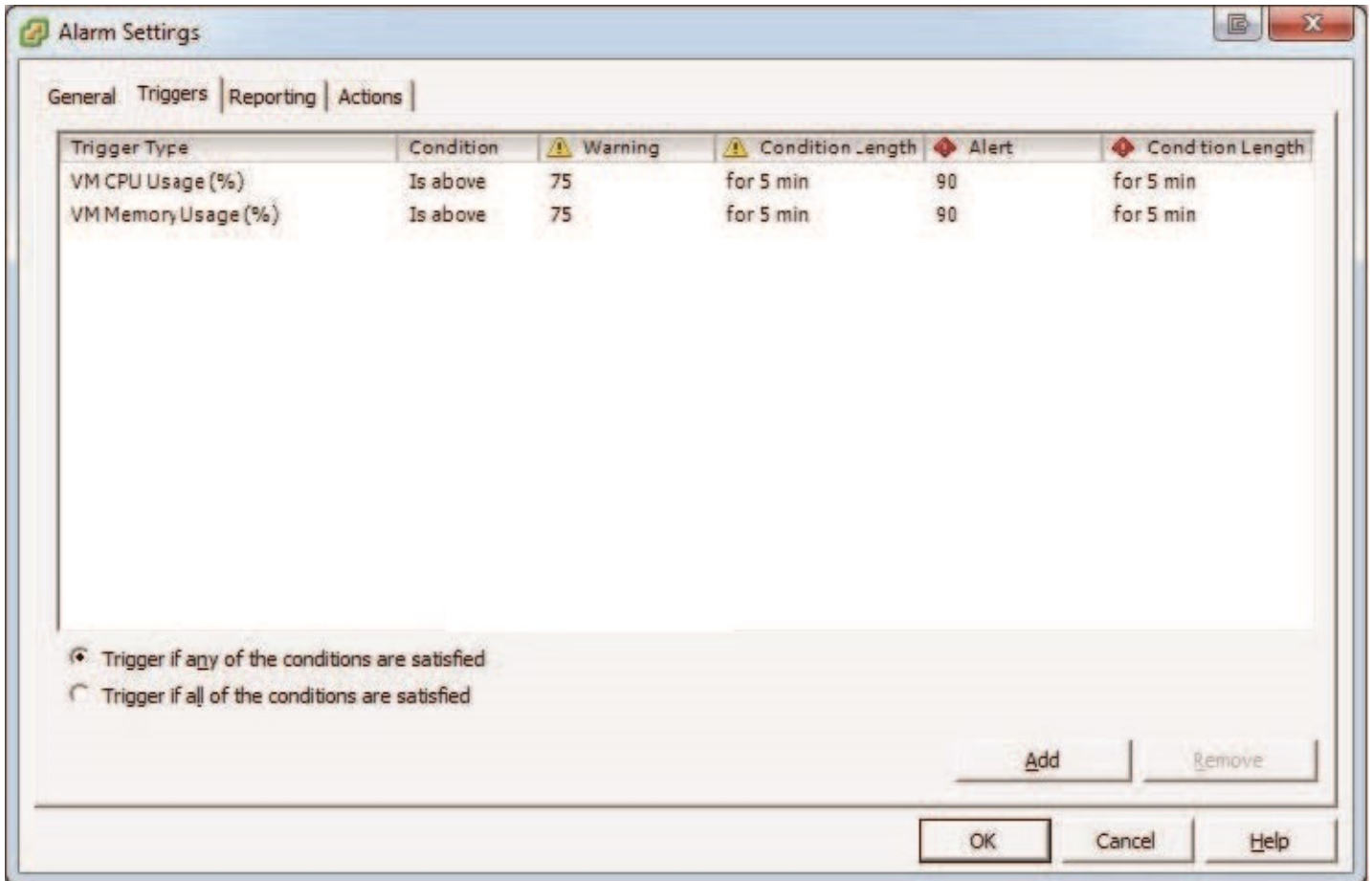
- A. Configure a CPU reservation for this virtual machine.
- B. Increase the CPU shares for the resource pool.
- C. Increase the CPU shares for the virtual machine.
- D. Increase the share priority setting for the Production resource pool.

**Answer: A,C**

**Explanation:**

**QUESTION NO: 56**

Click the Exhibit button.



ACME Party Supplies Corporation has a requirement to monitor all virtual machines in a vSphere 5 environment for CPU and Memory usage. An administrator configures an alarm in vCenter Server to send an alert when any VM exceeds 65% memory utilization and 75% CPU utilization. The alarm should warn administrators if the virtual machine is within 20% of the defined thresholds. The alarm has been created with the default options as shown in the exhibit.

Which three modifications must be made to the default settings in the alarm definition to satisfy the stated requirements? (Choose three.)

- A. Set the VM CPU Usage (%) Alert trigger to 75% and the VM Memory Usage (%) Alert trigger to 55%
- B. Set the VM CPU Usage (%) Alert trigger to 75% and the VM Memory Usage (%) Warning trigger to 55%
- C. Set the VM CPU Usage (%) Warning trigger to 65% and the VM Memory Usage (%) Warning trigger to 45%
- D. Set the Trigger if all of the conditions are satisfied radio button
- E. Set the Trigger if any of the conditions are satisfied radio button

**Answer: A,C,E**

**Explanation:**

**QUESTION NO: 57**

An administrator is performing maintenance on a storage array used by an ESXi 5.x host. The

administrator wants to disable alarm actions for the host while the maintenance is taking place.

What procedure will accomplish this task?

- A.** Go to the Alarms tab for each ESXi host in the DRS cluster. Locate storage-related alarms. Right-click and disable each alarm.
- B.** Right-click the DRS cluster and select Alarm and Disable Alarm Actions.
- C.** Right-click the ESXi host and select Alarm and Disable Alarm Actions.
- D.** Go to the Alarms tab for the Datacenter containing the DRS cluster. Locate the storage-related alarms. Right-click and disable each alarm.

**Answer: C**

**Explanation:**

### **QUESTION NO: 58**

An administrator would like to have vCenter take action any time a virtual machine is using over 90% of its available resources for five minutes or longer.

Which three actions can be taken by vCenter Server in response to the trigger without running a script? (Choose three.)

- A.** Power on a VM
- B.** Reboot Guest on VM
- C.** Increase Virtual Machine Memory
- D.** Migrate a VM
- E.** Increase Virtual Machine CPU Shares

**Answer: A,B,D**

**Explanation:**

### **QUESTION NO: 59**

A group of virtual machines has been deployed using thin disks because of limited storage space availability. The storage team has expressed concern about extensive use of this type of provisioning. At which level can the administrator set an alarm to notify the storage team?

- A.** Datastore
- B.** Virtual Machine
- C.** Host

**D. Resource Pool**

**Answer: A**

**Explanation:**

**QUESTION NO: 60**

An administrator has purchased a new 10GB Converged Network Adapter (CNA) for installation in a system that is running ESXi 5.x. The administrator has downloaded the latest driver from the hardware vendor and wants to include the driver in an image. The image profile acceptance level is set to VMwareSupported. The acceptance level of the driver is VMwareSupported.

Which two statements are true about the inclusion of this driver in the image? (Choose two.)

- A.** Support calls for the driver will be directed to the partner.
- B.** The image can be built, but the driver will not be included in the image.
- C.** The image can be built and the driver will be included.
- D.** Support calls for the driver will be handled by VMware.

**Answer: A,C**

**Explanation:**

**QUESTION NO: 61**

What are the three service offerings provided by a VMware-powered public cloud? (Choose three.)

- A.** Committed
- B.** Transient
- C.** Dedicated
- D.** Highly Elastic
- E.** Basic

**Answer: A,C,E**

**Explanation:**

**QUESTION NO: 62**

An administrator has been tasked with upgrading an existing host from ESX 4.1 to ESXi 5.x. The existing host has only vSwitch0 with all the default settings.

The upgraded host will have the following new requirements.

1. 116 virtual machines will be connected.
2. Four uplinks configured for port-based load balancing.
3. The switch will include a secondary heartbeat network for HA.

Which two statements are true about this configuration? (Choose two.)

- A. The Service Console Port will be removed during the upgrade
- B. The configuration requires only one VMkernel Port
- C. The default vSwitch0 is sufficient for this configuration
- D. A change to vSwitch0 Properties is required

**Answer: A,D**

**Explanation:**

#### **QUESTION NO: 63**

Virtual machine VM1 is unable to communicate with virtual machine VM2. Both virtual machines are connected to a portgroup named Production on vSwitch1 on host ESXi01. Which statement could explain why?

- A. The only vmnic connected to vSwitch1 on ESXi01 is set to unused
- B. The only vmnic connected to vSwitch1 on ESXi01 is set to standby
- C. Load balancing settings on Production do not match vSwitch1
- D. VM1 is configured for VGT, VM2 is configured for VST

**Answer: D**

**Explanation:**

#### **QUESTION NO: 64**

An administrator is creating a new virtual machine using the New Virtual Machine wizard in custom mode on an ESXi 5.x host with two quad-core CPUs. What would limit the maximum number of virtual sockets for the virtual machine to 8? (Choose three.)

- A. Windows 2008 32-bit is configured as the guest operating system.
- B. Virtual machine hardware version 8 is configured for the VM.

- C. Hyperthreading is disabled on the ESXi host.
- D. The ESXi host is configured with a Standard license.
- E. The number of cores per virtual socket is set to 4.

**Answer: C,D,E**

**Explanation:**

#### **QUESTION NO: 65**

What are two methods of maximizing VMFS performance for virtual machines across all the hosts in a cluster? (Choose two.)

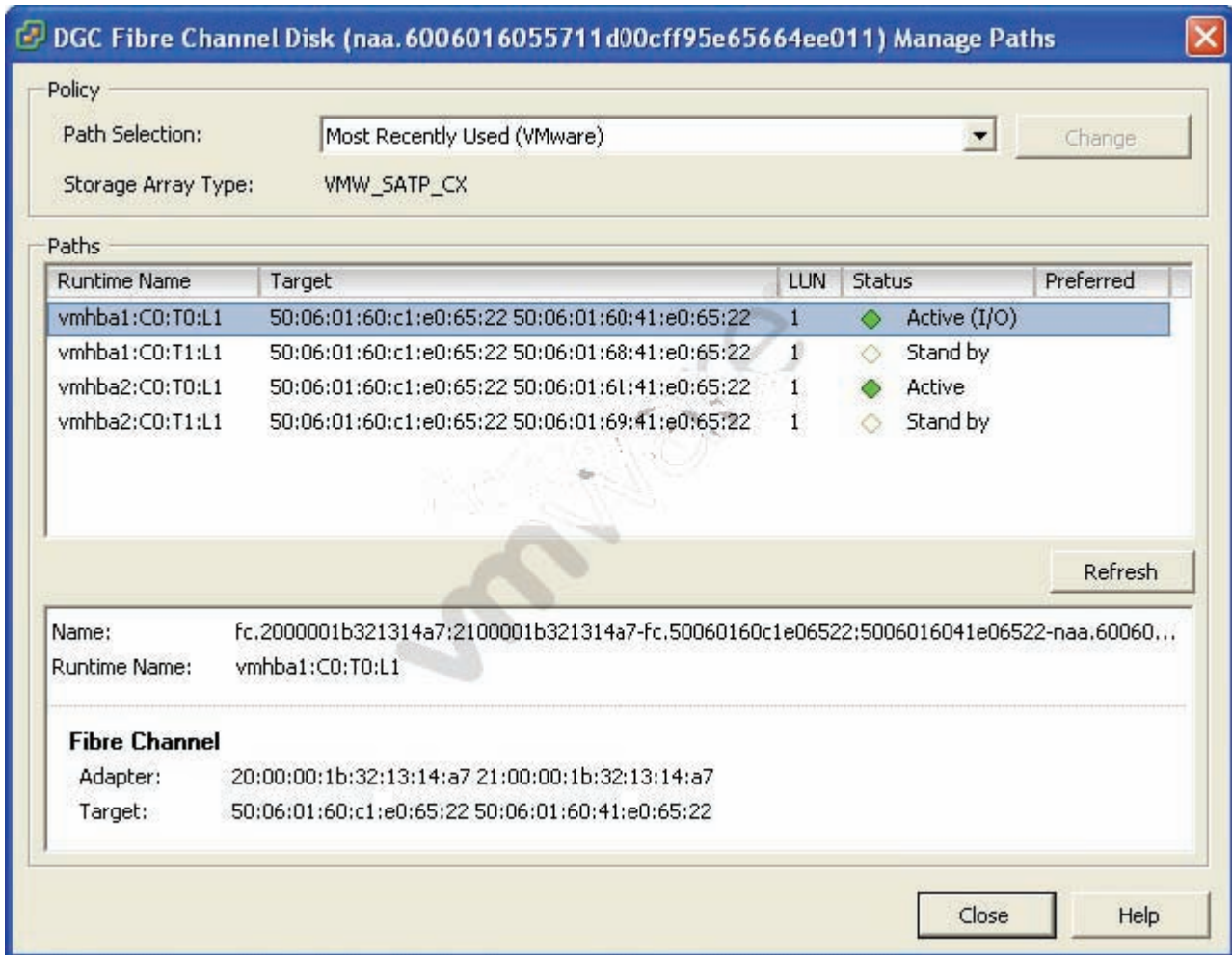
- A. Use disk shares to prioritize virtual machine disk I/O
- B. Enable Storage I/O control
- C. Enable Storage DRS with I/O load balancing
- D. Enable Host Cache using local SSD drives

**Answer: B,C**

**Explanation:**

#### **QUESTION NO: 66**

Click the Exhibit button.



For the selected item, what two properties could the storage administrator use to create a zone?  
(Choose two.)

- A. 20.00.00.1b.32.13.14.a7
- B. vmhba1.C0.T0.L1
- C. fc.2000001b321314a7.2100001b321314a7
- D. 50.06.01.60.c1.e0.65.22

**Answer: A,D**

**Explanation:**

#### QUESTION NO: 67

Which two statements are true regarding vSphere standard switches? (Choose two.)

- A. Beaconing requires at least three uplinks to be considered useful.
- B. Virtual machines on different vSwitches require the vSwitches to share an uplink to communicate.
- C. vSphere virtual switches require at least one uplink adapter.



D. Setting the number of ports to the maximum on a vSwitch will exhaust the total ports on a host.

**Answer: A,D**

**Explanation:**

**QUESTION NO: 68**

Which types of traffic can a VMkernel port be enabled to carry on a ESXi 5.x host? (Choose three.)

- A. NFS
- B. Fault Tolerant
- C. Management
- D. iSCSI
- E. vMotion

**Answer: B,C,E**

**Explanation:**

**QUESTION NO: 69**

Networking policies for a vSphere Standard Switch, such as traffic shaping and security, can be overridden on which vSphere elements?

- A. On the virtual machine
- B. On the physical switch
- C. On the physical network interface
- D. On the port group

**Answer: D**

**Explanation:**

**QUESTION NO: 70**

When would a license server be configured for vCenter Server 5.x?

- A. When managing ESX 3.x servers
- B. When the vCenter Server Virtual Appliance (vCSA) is used
- C. Within the first 60 days
- D. A standalone license server is installed by default

**Answer: A**

**Explanation:**

**QUESTION NO: 71**

What two Advanced IP Allocation Schemes are available? (Choose two.)

- A. Fixed
- B. DHCP
- C. OVF Environment
- D. Transient

**Answer: B,C**

**Explanation:**

**QUESTION NO: 72**

What are two valid Resource settings that can be set at the vApp level? (Chose two)

- A. Network
- B. CPU
- C. Memory
- D. Disk

**Answer: B,C**

**Explanation:**

**QUESTION NO: 73**

An administrator is investigating a report of slow disk performance. Where is the most efficient place for the administrator to check?

- A. The performance tab of the vApp.
- B. The performance tab of the virtual machine.
- C. The performance tab of the vApp resource pool.
- D. The performance tab of the cluster.

**Answer: B**

**Explanation:**

**QUESTION NO: 74**

An administrator creates a new Role of "Virtual Machine Creator" for members of the helpdesk and server teams. Privileges include.

Datastore - Allocate space

Network - Assign network

Resource - Assign virtual machine to resource pool

Virtual machine > Configuration - all

Virtual machine > Interaction - all

The new role is granted to the teams at the appropriate VMs and Templates folder, Cluster and Datastore objects. After applying the role, users report they are unable to create new Virtual Machines. What should be changed to allow new virtual machines to be created?

- A. Add a privilege to the role Virtual machine > Inventory - Create new
- B. Grant the teams the role at the Datacenter level
- C. Ensure Propagate to Child Objects is selected on the objects.
- D. Grant the teams the role on the Production network object.

**Answer: A**

**Explanation:**

**QUESTION NO: 75**

A mid-size company with a vSphere 5 cluster wants to enable their helpdesk staff to be able to acknowledge alarms on the hosts. Currently the group "HelpDesk" has the Read-only role assigned to the Cluster object. Which action should the administrator perform?

- A. Enable Propagate to Child Objects on the current permission.
- B. Move the current permission to the Datacenter object.
- C. Add the Alarms - Acknowledge Alarm privilege to the current role and enable "Propagate to Child Objects"
- D. Clone the role, add the Alarms - Acknowledge Alarm privilege, replace the current role.

**Answer: D**

**Explanation:**

**QUESTION NO: 76**

A company is planning an upgrade from vSphere 4.x to vSphere 5. They currently have three dual CPU servers licensed for ESXi 4.1 Advanced

Each server has 256GB of RAM installed.

Their virtual machines are sized three ways.

Light. 1v CPU, 4GB RAM

Medium. 2v CPU, 8GB RAM

Heavy. 4 vCPU, 12GB RAM

The Production workload consists of.

20 Light servers

20 Medium servers

2 Heavy servers

The Development workload consists of.

10 Light servers

10 Medium servers

How will vSphere 5 licensing impact their upgrade? (Choose two.)

- A. They will need to purchase additional ESXi licenses.
- B. They will be able to reduce their power consumption.
- C. They will be restricted from powering on additional virtual machines.
- D. A license upgrade will be needed to add vCPUs to the Heavy servers.

**Answer: B,C**

**Explanation:**

**QUESTION NO: 77**

What is a benefit of vCenter Linked-Mode?

- A. Allows the vCenter Server Virtual Appliance (vCSA) to manage multiple sites
- B. Pools vRAM entitlement
- C. Increases vCenter security
- D. Increases vCenter reliability

**Answer: B**

**Explanation:**

**QUESTION NO: 78**

What virtual machine action listed below can be performed on a template?

- A. Power on
- B. Clone
- C. Edit Settings
- D. Migrate

**Answer: B**

**Explanation:**

**QUESTION NO: 79**

An administrator is attempting to clone a running virtual machine, but receives an error that prevents that the virtual machine is using a device that prevents the operation.

What two device types listed below could be causing this error? (Choose two.)

- A. An independent mode virtual disk
- B. A physical compatibility mode RDM
- C. An LSI logic SAS adapter
- D. A BusLogic Parallel adapter

**Answer: A,B**

**Explanation:**

**QUESTION NO: 80**

When cloning a virtual machine to a template, what two attributes from the list below can be changed for the destination virtual disk? (Choose two.)

- A. Virtual disk format
- B. Number of network adaptors
- C. IP Address
- D. Location for virtual machine files

**Answer: A,D**

**Explanation:**

**QUESTION NO: 81**

What tool can an administrator use to determine if an existing environment is ready for Fault Tolerance?

- A. Fault Tolerance Map
- B. VMware SiteSurvey Tool
- C. VMware Cluster Analyzer
- D. VMware Capacity Planner

**Answer: B**

**Explanation:**

**QUESTION NO: 82**

What two methods can be used to reduce the vMotion migration time of a virtual machine? (Choose two.)

- A. Enable High priority on the virtual machine before starting the Migrate wizard.
- B. Select High priority during the Migrate wizard.
- C. Lower the memory reservation for the virtual machine.
- D. Ensure the cluster has the default Swapfile policy set.

**Answer: B,D**

**Explanation:**

**QUESTION NO: 83**

Which types of devices can be connected to a virtual machine during a vMotion migration?  
(Choose two.)

- A. SCSI pass-through devices connected to the ESXi 5 host.
- B. NFS mounts inside of the guest.
- C. USB pass-through devices connected to the ESXi 5 host.
- D. ISO images connected using the vSphere 5 client.

**Answer: B,C**

**Explanation:**

**QUESTION NO: 84**

An administrator notices that the database virtual machines fail to backup within the backup window. Each database virtual machine has 4 vCPUs, 16GB RAM and 12 virtual disks. There are 16 database virtual machines to backup using 8 backup jobs.

Which is the simplest way to improve the backup performance for these virtual machines?

- A. Add a backup job for each virtual machine.
- B. Set a 16GB reservation for each virtual machine.
- C. Add 1MB VMDK drives at 1.0, 2.0 and 3.0 on the VDR appliance.
- D. Upgrade the array to 8GB FCP and ensure multipathing is configured properly.

**Answer: C**

**Explanation:**

**QUESTION NO: 85**

What are three of the steps recalled patches automatically go through in vSphere Update Manager? (Choose three.)

- A. Hosts with recalled patches are placed maintenance mode.
- B. Hosts with recalled patches are remediated.
- C. The recalled patch binary is deleted from the repository.
- D. The recalled patch is flagged in the database.
- E. A notification is generated in the notification tab.

**Answer: C,D,E**

**Explanation:**

**QUESTION NO: 86**

Which configuration requires an additional database server when adding vSphere Update Manager 5.x to an environment?

- A. vCenter Server Virtual Appliance (vCSA) with an external Oracle database
- B. vCenter Application with the default database
- C. vCenter Application with an external SQL 2008 Enterprise database
- D. vCenter Server Virtual Appliance (vCSA) with an external DB2 database

**Answer: D**

**Explanation:**

**QUESTION NO: 87**

Select three of the steps for configuring iSCSI Software Initiator multipathing when load balancing with a single vSphere standard switch. (Choose three.)

- A. Change the Path Selection Policy to Round Robin (VMware)
- B. Enable Override switch failover order
- C. Enable Route based on IP Hash
- D. Enable iSCSI port binding on the VMkernel object or objects
- E. Add VMkernel adapters to the iSCSI Network Configuration

**Answer: A,B,E**

**Explanation:**

**QUESTION NO: 88**

An administrator wants to adjust disk resource allocation to ensure proper storage performance.

Which two mechanisms are available? (Choose two.)

- A. Shares



- B. Guarantee IOPs
- C. Limit IOPs
- D. Reservation

**Answer: A,C**

**Explanation:**

#### **QUESTION NO: 89**

Assuming that ballooning is possible, under which three circumstances might the VMkernel use a swap file for a running virtual machine? (Choose three.)

- A. The Mem.CtlMaxPercent value is between 10 and 25 percent.
- B. Memory cannot be reclaimed quickly enough.
- C. The virtual machine is starting up.
- D. VMware Tools is not installed.
- E. 50% of the configured memory has already been ballooned.

**Answer: A,B,E**

**Explanation:** C: Wrong: When the machine is starting up the Ballooning driver hasn't loaded yet.D: Wrong: When VMware tools is not installed Ballooning isn't possible

#### **QUESTION NO: 90**

Which functions can be performed with the Plug-in Manager? (Choose two.)

- A. Enable an installed plug-in
- B. Remove permissions for a plug-in
- C. View the status of installed plug-ins
- D. Uninstall a plug-in

**Answer: A,C**

**Explanation:**

#### **QUESTION NO: 91**

What are two requirements for successful vMotion migration? (Choose two.)

- A. CPUs with matching SpeedStep settings must exist on both the source and destination hosts.
- B. Virtual machines must not utilize hardware local to the host such as SCSI pass-through.
- C. Virtual machines must not have a CDROM connected via the vSphere client.
- D. Dedicated Gigabit Ethernet Networking must exist between the source and destination hosts.

**Answer: B,C**

**Explanation:**

#### **QUESTION NO: 92**

Which two options will be presented during the Migrate wizard for a powered on virtual machine?  
(Choose two.)

- A. Change Host
- B. Change Host and Datastore
- C. Change Network
- D. Change Datastore

**Answer: A,D**

**Explanation:**

#### **QUESTION NO: 93**

What are two requirements for a fully functional vSphere HA cluster? (Choose two.)

- A. vCenter installed or a vCenter Server Virtual Appliance (vCSA) deployed.
- B. Access to local storage for each host in the cluster.
- C. Static IP addresses entered in each hosts file in the cluster.
- D. A minimum of one VMkernel port per host.

**Answer: A,D**

**Explanation:**

#### **QUESTION NO: 94**

An administrator plans to deploy ESXi 5.x, but does not want to use CD or DVD media.

What are two alternate ways to provide the ESXi 5.x installation script to the host? (Choose two.)

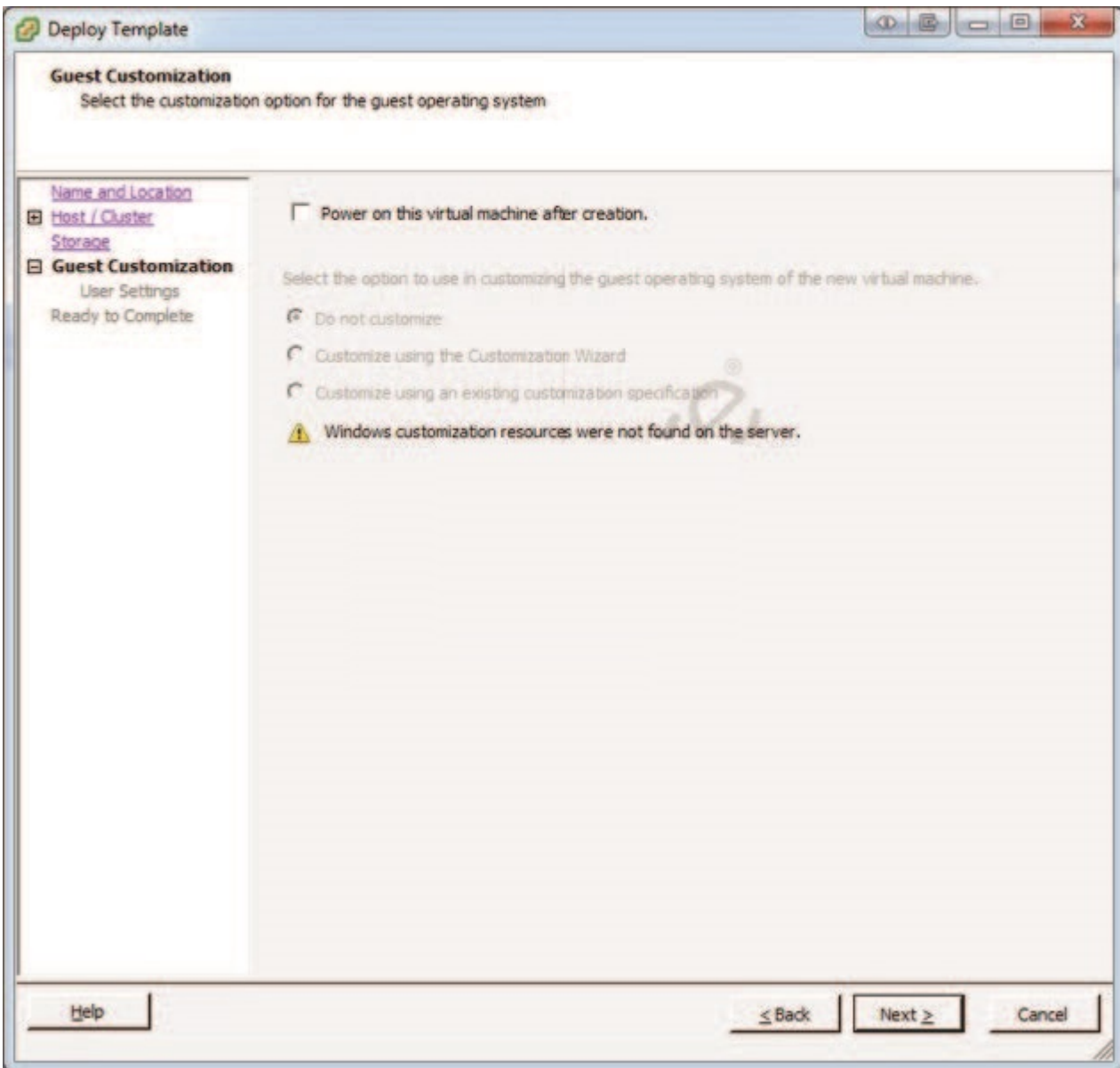
- A. PXE
- B. FTP
- C. HTTP
- D. IPMI

**Answer: B,C**

**Explanation:**

**QUESTION NO: 95**

Click the Exhibit button.



An administrator has implemented a new vSphere 5 environment and is deploying their first Windows 2008 R2 template. When running the Deploy Template wizard, the error shown in the exhibit appears. What can be done to correct the problem?

- A. Select the correct guest OS setting for the virtual machine.
- B. Windows 2003 x64 cannot be customized.
- C. Download and install the Microsoft Sysprep tool into the virtual machine to be customized.

**D.** Download the Microsoft Sysprep tool to the appropriate vCenter Server directory.

**Answer: A**

**Explanation:** <http://communities.vmware.com/thread/45830>

A is correct.

See also the table at:

[http://kb.vmware.com/selfservice/microsites/search.do?language=en\\_US&cmd=displayKC&externalId=1005593](http://kb.vmware.com/selfservice/microsites/search.do?language=en_US&cmd=displayKC&externalId=1005593)

sysprep is not applicable for Windows vista/2008/7

#### **QUESTION NO: 96**

An administrator uses VMware Data Recovery to make backups of virtual machines. Checking on the backup jobs that were run the previous evening, the administrator notices that some jobs completed but that other jobs did not.

What are two possible causes for the failure? (Choose two.)

- A.** The deduplication store had 400GB of available space before the start of the affected jobs.
- B.** Eight backup jobs were running simultaneously, causing new jobs to fail to start.
- C.** The backup window was not open long enough to retrieve all of the changed blocks.
- D.** CPU utilization on the VDR appliance exceeded 90% before one or more jobs executed.

**Answer: B,C**

**Explanation:**

#### **QUESTION NO: 97**

An administrator is responsible for enabling file access for desktop users. Many users have complained that they cannot access their files. An alert in the vSphere Client states that the storage connectivity alarm for all hosts has been triggered. The storage screen indicates that everything is connected, but the triggered alert has not been acknowledged.

Which action will correct the user access problem?

- A.** Rescan the storage on the file-sharing virtual machine on which the users are seeing the problem.

- B.** Reconnect the storage containing the user files to all hosts in the cluster, then Refresh datastores on all hosts in the cluster.
- C.** Tell each user to reboot their computer.
- D.** Reconnect the storage containing the user files to all hosts in the cluster, then Rescan datastores on all hosts in the cluster.

**Answer: D**

**Explanation:**

#### **QUESTION NO: 98**

While performing a security check the vSphere administrator finds unassigned AD accounts with vSphere permissions. If the accounts are removed from Active Directory what will happen to any user logged into vCenter with those accounts?

- A.** The vSphere client warns the user they will be logged out in 1 hour.
- B.** The user can remain logged in indefinitely.
- C.** The user is immediately disconnected from vCenter Server and cannot log back in.
- D.** The user can remain logged into vCenter for up to 24 hours.

**Answer: D**

**Explanation:**

#### **QUESTION NO: 99**

Where are IP addresses for a vSphere Storage Appliance (VSA) cluster managed?

- A.** On each VSA appliance using a web-based portal
- B.** On the VSA Manager tab for the cluster hosting VSA
- C.** On the VSA Manager appliance using a web-based portal
- D.** On the vCenter server installed on a VSA host

**Answer: B**

**Explanation:**

#### **QUESTION NO: 100**

An administrator is configuring a stretched HA configuration and has HA errors on all of the hosts at the remote site. What can be done to ensure virtual machines at one site can be restarted at the

remote site?

- A. Ensure any firewalls between the hosts are allowing port 8182
- B. Create separate HA clusters at each site and enable Stretch Cluster on each
- C. Ensure the latency between the sites is less than 5 milliseconds
- D. Ensure each site has no more than 4 primary hosts

**Answer: A**

**Explanation:**

## **Topic 2, Volume B**

### **QUESTION NO: 101**

What is a valid example of a vSphere Update Manager upgrade?

- A. A VMware Tools upgrade on a Fault Tolerant machine with automatic snapshots.
- B. Upgrading and patching multiple ESXi hosts simultaneously in a selected cluster.
- C. Upgrading an ESX 4.1 host to ESXi 5.x with a sufficient boot partition.
- D. An ESXi 5.x host update with automatically deleted snapshots.

**Answer: C**

**Explanation:**

### **QUESTION NO: 102**

Which is an important benefit provided by VLANs?

- A. Reduced hardware requirements
- B. Increased broadcast traffic
- C. Fault tolerance
- D. Increased security on a network segment

**Answer: A**

**Explanation:**

### **QUESTION NO: 103**

Before upgrading an ESXi host to vSphere 5.x from vSphere 4.x, which three actions should be

taken? (Choose three.)

- A. Update vCenter from 4.x to 5.x
- B. Convert any Service Console port to Management.
- C. Add an updated license to the host
- D. Update vSphere 4.x licenses using the VMware License Portal
- E. Verify the intended host is compatible with vSphere 5.x

**Answer: A,D,E**

**Explanation:**

#### **QUESTION NO: 104**

Recently, a storage interface card in an ESXi 5.x host has been experiencing inconsistent connectivity states.

Which two methods can be used to quickly identify the issue and immediately notify an administrator so that the issue can be resolved? (Choose two.)

- A. Set up an alarm with the Lost Storage Path trigger to send an email for notification when the connection is lost.
- B. Set up an alarm with the Lost Storage Connectivity trigger to send an email for notification when the connection is lost.
- C. Set up an alarm with the Storage Redundancy Degraded trigger and configure an SNMP trap for notification when the connection is lost.
- D. Set up an alarm with the Lost Storage Connectivity trigger and configure an SNMP trap for notification when the connection is lost.

**Answer: B,D**

**Explanation:**

#### **QUESTION NO: 105**

The VMware vCenter Server Virtual Appliance (vCSA) offers many features of the Windows application version.

Which of the following features is only available on the Windows application version of vCenter?

- A. Host Profiles

- B. Template and clone customization
- C. Active Directory authentication
- D. IPv6

**Answer: D**

**Explanation:** [http://www.vmware.com/support/vsphere5/doc/vsp\\_vc50\\_u1a\\_rel\\_notes.html](http://www.vmware.com/support/vsphere5/doc/vsp_vc50_u1a_rel_notes.html)

- vCenter Server Virtual Appliance does not support IPv6

Although the vCenter Server Virtual Appliance Web console has an option to configure IPv6,

**vCenter Server Virtual Appliance does not support IPv6 configuration.** Workaround: Do not set or change IPv6 configuration on the vCenter Server Virtual Appliance Web console.

### **QUESTION NO: 106**

An administrator is configuring a vSphere HA cluster for three ESXi 5.x hosts and their resident virtual machines. The cluster will be configured to support a single host failure. Resource reservations must be enforced during a failover event.

Assuming default settings, how does HA determine the current failover capacity?

- A.** Calculating the largest possible CPU and Memory guarantee for any running virtual machine in the cluster, then calculating how many virtual machines of that size can be started on the largest host and reserving space in the cluster accordingly.
- B.** Averaging the largest possible CPU and Memory guarantee for any running virtual machine in the cluster, then calculating how many virtual machines of that size can be started on the largest host and reserving space in the cluster accordingly.
- C.** Calculating the largest possible CPU and Memory guarantee for any virtual machine in the cluster, then calculating how many virtual machines of that size can be started on the largest host and reserving space in the cluster accordingly.
- D.** Averaging the largest possible CPU and Memory guarantee for any virtual machine in the cluster, then calculating how many virtual machines of that size can be started on the largest host and reserving space in the cluster accordingly.

**Answer: A**

**Explanation:**

### **QUESTION NO: 107**

What are three valid subprofile configurations that can be edited with the Host Profile editor?



(Choose three.)

- A. Cluster
- B. Date and Time
- C. Networking
- D. Security
- E. Licensing

**Answer: B,C,D**

**Explanation:**

### **QUESTION NO: 108**

An administrator finds that an ESXi 5.x host cannot be managed by vCenter Server.

Which three logs can be reviewed using the DCUI? (Choose three.)

- A. Syslog
- B. Config log
- C. Virtual Center Agent
- D. ESXi shell logs
- E. VMware HA log

**Answer: A,B,C**

**Explanation:**

### **QUESTION NO: 109**

Which two steps are required before VMware Data Recovery can be used? (Choose two.)

- A. The Data Recovery Appliance Module must be installed on vCenter Server.
- B. A private network must be created for the backup appliance.
- C. The vSphere Client plug-in must be installed on any machine VDR will be managed from.
- D. The Data Recovery backup appliance must have additional storage added to it.

**Answer: C,D**

**Explanation:**

**QUESTION NO: 110**

Which three tasks can be selected from the home page of an ESXi 5.x host? (Choose three.)

- A. Browse objects managed by the host
- B. Browse NFS mounts for this host
- C. Download VMware vCenter or the vSphere client from vmware.com
- D. Shutdown or restart the host
- E. Download the PowerCLI installer

**Answer: A,B,C**

**Explanation:**

**QUESTION NO: 111**

When deploying an OVF template, the resulting virtual disk is created in what file format?

- A. OVF
- B. VMDK
- C. VMX
- D. VSWP

**Answer: B**

**Explanation:**

**QUESTION NO: 112**

A new LUN has been provisioned to all hosts in a vSphere 5.x cluster. On one host a new VMFS datastore has been created. How will the new datastore be discovered by the other ESXi 5.x hosts?

- A. A rescan of all host bus adapters is periodically performed by ESXi hosts to detect new VMFS datastores.
- B. New VMFS volumes are automatically added to members of a cluster by vCenter 5.
- C. A manual refresh is required on each ESXi 5.x hosts to discover new VMFS datastores.
- D. A refresh of all host bus adapters is periodically performed by ESXi hosts to detect new VMFS datastores.

**Answer: C**

**Explanation:**

**QUESTION NO: 113**

Assuming that the appropriate HA configuration options have been selected, in which two situations would vSphere HA be unable to restart virtual machines? (Choose two.)

- A. A storage error has occurred on the fiber channel storage array.
- B. An ESXi host in the cluster becomes isolated from the network
- C. An ESXi host was automatically put into Standby Mode
- D. Licensing was not updated after an upgrade from vSphere 4.x

**Answer: A,D**

**Explanation:**

**QUESTION NO: 114**

What do changes made to resources reserved by a resource pool affect in the resource hierarchy?

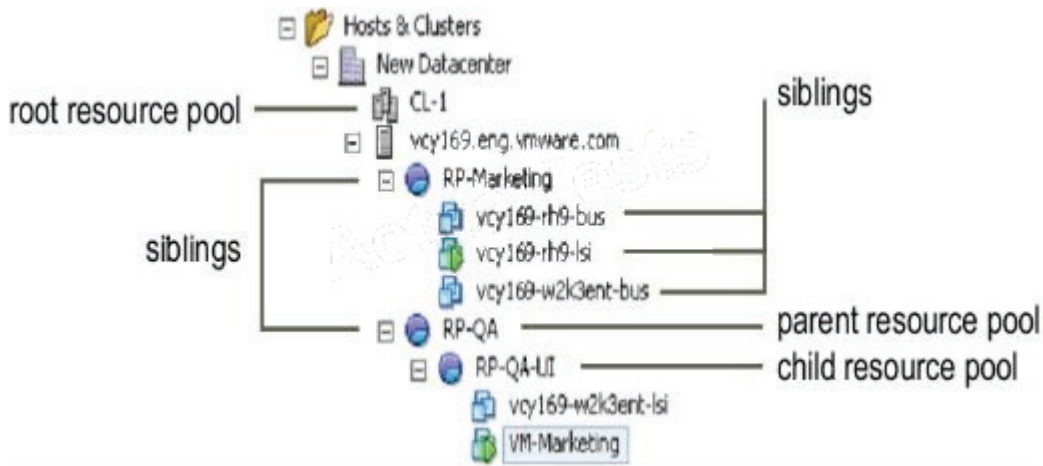
- A. Child pools
- B. Host pools
- C. Sibling and parent pools
- D. Root resource pools

**Answer: C**

**Explanation:**

A resource pool can contain child resource pools, virtual machines, or both. You can create a hierarchy of shared resources. The resource pools at a higher level are called parent resource pools. Resource pools and virtual machines that are at the same level are called siblings. The cluster itself represents the root resource pool. If you do not create child resource pools, only the root resource pools exist.

In the following example, RP-QA is the parent resource pool for RP-QA-UI. RP-Marketing and RP-QA are siblings. The three virtual machines immediately below RP-Marketing are also siblings.  
Figure 8-1. Parents, Children, and Siblings in Resource Pool Hierarchy



**QUESTION NO: 115**

How can virtual machines be moved between datacenters?

- A. High-Availability failover
- B. Cold migration
- C. vMotion migration
- D. Storage vMotion migration

**Answer: B**

**Explanation:**

**QUESTION NO: 116**

An administrator decides to use Data Recovery to back up some key virtual machines. What is the process to install Data Recovery?

- A. Download the executable from VMware.com and run from a machine with the vSphere Client installed.
- B. Use the vCenter Installer from the original vCenter media and select VMware Data Recovery
- C. Download the current OVF package from VMware.com onto a machine with the vSphere Client installed and use the Deploy OVF from Template option.
- D. Download the vmdk and vmx files from VMware.com and copy to a datastore. Right-click the vmx file and select Add to Inventory.

**Answer: C**

**Explanation:**

**QUESTION NO: 117**

Which two statements are true about the share value for a virtual machine after it has been added to a resource pool? (Choose two.)

- A.** If a previously defined custom share value exists, the total shares in the pool should be evaluated to maintain the expected performance.
- B.** If a previously defined custom share value exists, the %Shares value will automatically be adjusted relative to the total number of shares in the pool.
- C.** If a previously defined share level (high, medium, low) exists, the %Shares value is changed to Custom and the previous value is retained.
- D.** If there are no other objects in the pool the share value is irrelevant.

**Answer: A,D**

**Explanation:**

**QUESTION NO: 118**

The storage administrator has recommended testing the performance benefits of jumbo frames and enabled jumbo frames on the storage array. The VMware administrator has enabled jumbo frames on the VMkernel port used for the software iSCSI initiator.

What other two components must be modified to enable jumbo frames support for the software iSCSI initiator? (Choose two.)

- A.** The physical switch
- B.** The port group
- C.** The software initiator
- D.** The virtual switch

**Answer: A,D**

**Explanation:**

**QUESTION NO: 119**

If you create a custom role and do not assign privileges what system-defined privileges are added? (Choose two.)

- A. System.Anonymous
- B. System.Read
- C. System.Write
- D. System.Administrator

**Answer: A,B**

**Explanation:**

#### **QUESTION NO: 120**

Assuming that VLANs are not configured, what is true about traffic from a virtual machine connected to a port group on a vSphere Standard Switch with no uplinks?

- A. The virtual switch will drop the packets if no uplink is present.
- B. Virtual machines on any vSphere Standard Switch on the same ESXi host can receive the traffic.
- C. Virtual machines in any port group on the virtual switch can monitor all of the traffic.
- D. vMotion will not migrate any Virtual machines connected to a port group on the virtual switch.

**Answer: D**

**Explanation:**

#### **QUESTION NO: 121**

What function does Enhanced vMotion Compatibility (EVC) provide?

- A. The ability to enable Fault Tolerance on virtual machines that are not members of a cluster.
- B. The ability to use vMotion to migrate virtual machines between ESXi hosts with different CPU vendors.
- C. The ability to replace manual CPU identification masks with an automated process managed by the cluster.
- D. The ability to use vMotion to migrate virtual machines between hosts with identical CPUs but different vSphere versions.

**Answer: C**

**Explanation:**

#### **QUESTION NO: 122**

What is the default VFAT scratch partition size for ESXi 5.x when installed on a USB drive?

- A. 600MB
- B. 544MB
- C. 4GB
- D. none

**Answer: D**

**Explanation:**

#### **QUESTION NO: 123**

What is one requirement when adding an extent to a VMFS datastore?

- A. A new unused NFS mount
- B. An RDM with sufficient space available
- C. An unused iSCSI or FCP LUN
- D. Free space on the LUN holding the VMFS datastore

**Answer: C**

**Explanation:**

#### **QUESTION NO: 124**

What is an accurate statement about the secondary virtual machine of a VM that has VMware Fault Tolerance enabled?

- A. The secondary virtual machine cannot be stored on an NFS datastore.
- B. The secondary virtual machine is created on the same host as the primary.
- C. The secondary virtual machine can prevent other virtual machines from powering up.
- D. The secondary virtual machine can be used for load balancing.

**Answer: C**

**Explanation:**

#### **QUESTION NO: 125**

What is true about the HA agent on ESXi 5.x hosts?

- A. HA agent logs and entries use the prefix "aam"
- B. HA agents are set to start by default
- C. HA agents can store configuration information locally
- D. The vSphere client cannot determine which HA agent is the master

**Answer: C**

**Explanation:**

#### **QUESTION NO: 126**

An administrator is enabling Network I/O Control (NIOC) on a vSphere Distributed Switch.

Which types of network traffic can be prioritized with NIOC by default? (Choose three.)

- A. FCP Traffic
- B. NFS Traffic
- C. Virtual Machine Traffic By Virtual Machine
- D. iSCSI Traffic
- E. vSphere Replication (VR) Traffic

**Answer: B,D,E**

**Explanation:**

#### **QUESTION NO: 127**

How can you verify that vStorage APIs for Array Integration (VAAI) functionality is enabled for a storage array in a vSphere 5.x implementation?

- A. VAAI will be reported on the Hard Disk properties page for any VMDK stored on a compliant array
- B. Hardware Acceleration will be reported on the Hard Disk properties page for any VMDK stored on a compliant array
- C. Supported will be listed in the VAAI column for any datastore created on a compliant array
- D. Supported will be listed in the Hardware Acceleration column for any datastore created on a compliant array

**Answer: D**

**Explanation:**



**QUESTION NO: 128**

The RDP performance for a virtual machine on an ESXi 5.x host appears to be degraded.

What are two possible causes of the problem? (Choose two.)

- A. The virtual machine has a high Ready value.
- B. The virtual machine's network adaptor is not configured to Connect at power on.
- C. The virtual machine's network adaptor is not configured as connected.
- D. The virtual machine is on a physical network that has become saturated.

**Answer: A,D**

**Explanation:**

**QUESTION NO: 129**

An administrator wants to configure a DRS Migration Threshold that allows automated migration only when a host is placed into maintenance or to satisfy cluster constraints.

What setting should be utilized?

- A. Priority 2
- B. Priority 4
- C. The most conservative setting
- D. The default setting

**Answer: C**

**Explanation:**

**QUESTION NO: 130**

Which conditions are true regarding an ESXi 5.x host placed into maintenance mode while a member of a DRS cluster? (Choose two.)

- A. If the DRS cluster is in partially automated mode and vMotion is configured, its virtual machines will be moved automatically to other hosts in the cluster.
- B. If the DRS cluster is in fully automated mode and vMotion is configured, its virtual machines will be moved automatically to other hosts in the cluster.
- C. If the DRS cluster is in partially automated mode and vMotion is configured, its virtual machines that have a high restart priority will be migrated to other hosts in the cluster.
- D. All the virtual machines on the host must be migrated or powered off before the ESXi host will

complete entering maintenance mode.

**Answer: B,D**

**Explanation:**

**QUESTION NO: 131**

When designing a storage infrastructure to support ESXi 5.x hosts what limit will be reached first?

- A. Maximum number of NFS datastores
- B. Maximum number of iSCSI LUNs
- C. Maximum number of paths to an iSCSI RDM
- D. Maximum number of iSCSI paths on a host

**Answer: C**

**Explanation:**

**QUESTION NO: 132**

An administrator is performing upgrades to ESXi 5.x from ESX 3.x and ESX 4.x hosts.

What is true about this procedure?

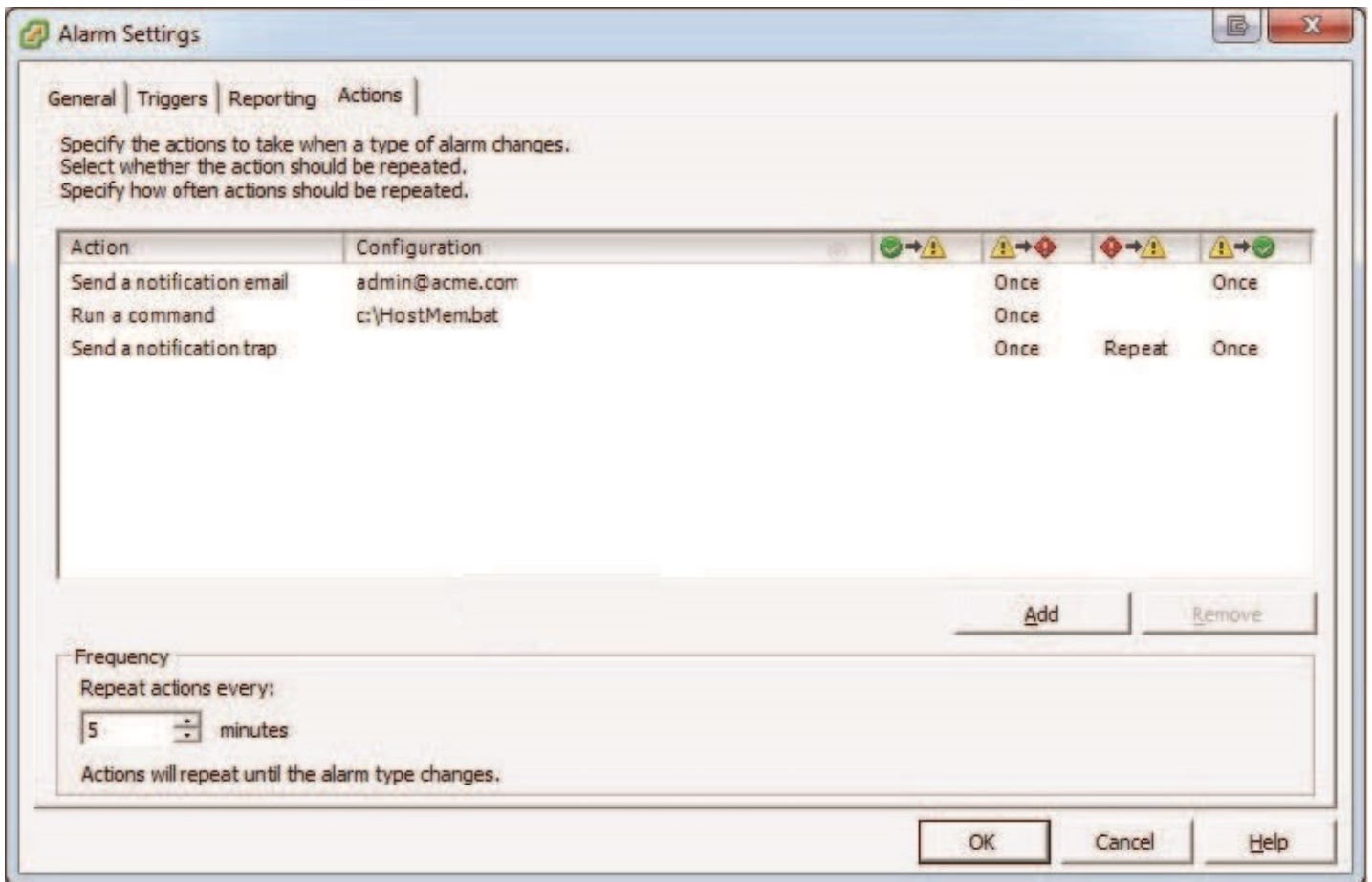
- A. A direct, in-place upgrade can be performed only on ESX 4.1 and later hosts.
- B. ESX 3.x hosts can be upgraded, but require an upgrade to 4.x before 5.x.
- C. A direct, in-place upgrade can be performed only on ESX 4.5 and later hosts.
- D. A direct, in-place upgrade can be performed only on ESX 3.5 and later hosts.

**Answer: B**

**Explanation:**

**QUESTION NO: 133**

Click the Exhibit button.



An administrator is seeing a warning on one of their hosts. The warning in the Triggered Alarms panel appears to come from a custom configured host alarm. The administrator has not seen any actions taken for this alarm even though the actions are configured in the alarm definition. The configured actions are shown in the exhibit.

What change can the administrator make to correct the problem?

- A. Configure the Alarm Frequency to repeat more often.
- B. Add an action for when the alarm changes from yellow to red.
- C. Add an action for when the alarm changes from green to yellow.
- D. Configure the alarm yellow to red action to repeat for all three actions configured.

**Answer: C**

**Explanation:**

**QUESTION NO: 134**

What differentiates a private cloud from a vSphere Infrastructure?

- A. A private cloud requires pooled resources including storage and networking.
- B. vSphere Infrastructure assumes a secure location for the workloads.

- C. vSphere Infrastructure allows consumption of resources over open standards.
- D. A private cloud assumes the consumer will maintain their portion of the infrastructure.

**Answer: A**

**QUESTION NO: 135**

Which is the most secure method of connecting to an iSCSI storage array using an independent hardware iSCSI adapter?

- A. One-way CHAP
- B. Mutual CHAP
- C. Per-target CHAP
- D. Per-subnet CHAP

**Answer: A**

**Explanation:**

**QUESTION NO: 136**

When an explicit failover order has been configured on a virtual switch with multiple uplinks, what determines which uplink is used when a failover event occurs?

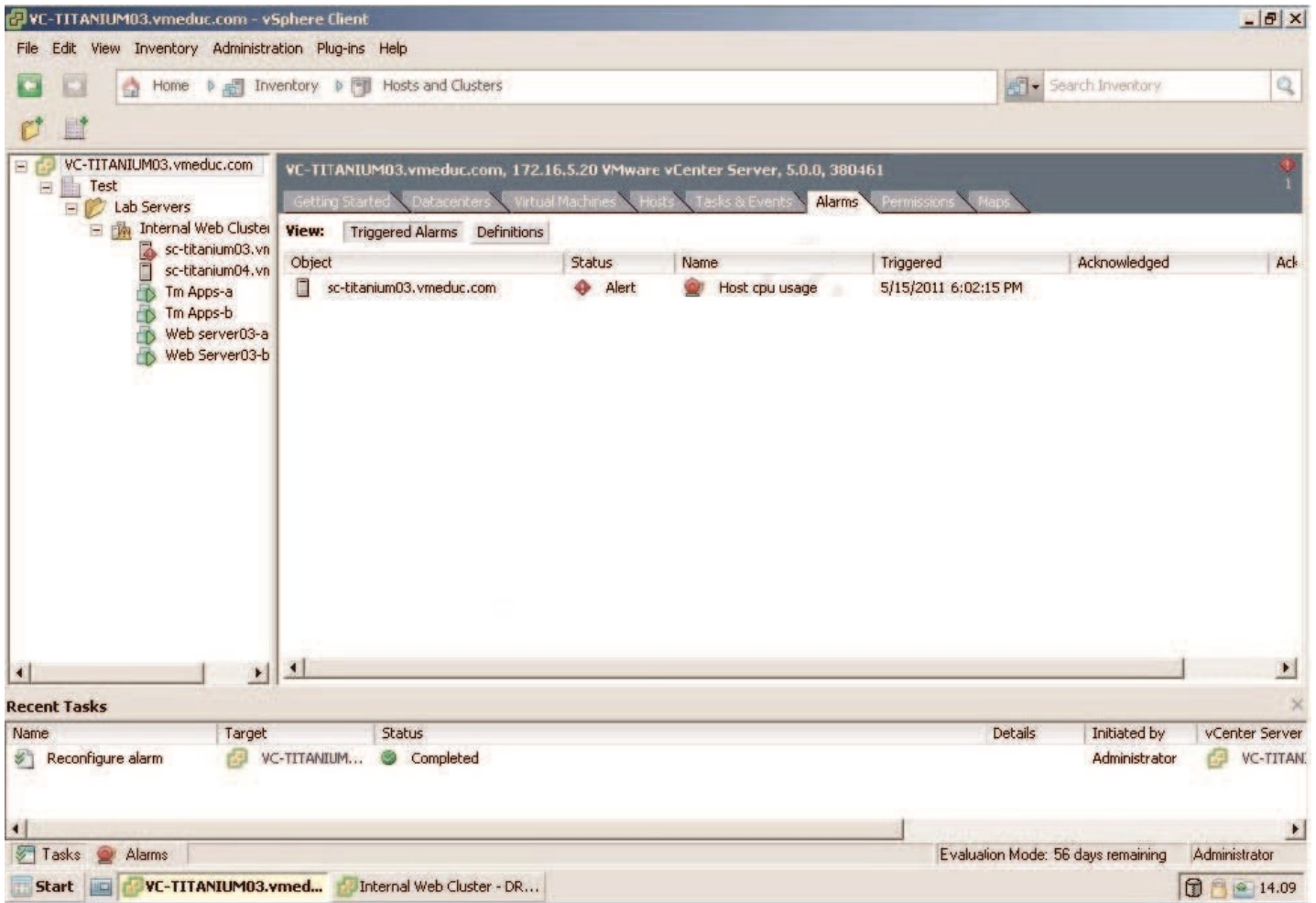
- A. The first available uplink that reports a positive link state
- B. The reported uptime for the surviving uplinks
- C. The next available uplink on the list
- D. The uplink with the shortest route

**Answer: C**

**Explanation:**

**QUESTION NO: 137**

Click the Exhibit button.



Users are having difficulty accessing a Web server since a new Web application was configured in a virtual machine running on sc-titanium03.vmeduc.com. The web server has been assigned 1 vCPU. The vSphere Client reports the error shown in the exhibit. DRS is set to fully automated mode, but the problem has not resolved.

Which action can resolve the issue?

- A. Set a CPU reservation for the web server VM.
- B. Manually move the Virtual Machine using high priority vMotion.
- C. Configure the DRS Migration Threshold to Aggressive.
- D. Set CPU affinity for the virtual machine.

**Answer: A**

**Explanation:**

### QUESTION NO: 138

Users are complaining that they cannot access their files on a file server virtual machine. The vSphere Client shows that a triggered alarm stating disk latency is beyond the default threshold for

the datastore where the file server virtual machine is located. The path selection policy has been set by the ESXi host to Fixed with default path settings.

Which two options could be used to increase performance of the file server virtual machine?

- A. Use disk shares to increase the priority for the datastore housing the file server virtual machine.
- B. Use vMotion to relocate the VM to an ESXi host with lower HBA saturation.
- C. Change the path selection policy to Round Robin.
- D. Change the path selection policy to Most Recently Used (MRU).

**Answer: B,C**

**Explanation:**

#### **QUESTION NO: 139**

When PSA is coordinating the VMware NMP and any installed third-party MPPs, the MPPs perform which task?

- A. Implement logical device bandwidth sharing
- B. Handle I/O queuing to the logical devices
- C. Provide logical device and physical path I/O statistics
- D. Manage physical path claiming and unclaiming

**Answer: D**

**Explanation:**

#### **QUESTION NO: 140**

When creating a dvPort group, which port binding option assigns a port to a virtual machine when the virtual machine is first powered on?

- A. Static binding
- B. Flexible
- C. Ephemeral
- D. Dynamic binding

**Answer: D**

**Explanation:**

#### **QUESTION NO: 141**

A new ESXi 5.x host is set up with two virtual machines. A memory limit is applied so that users will have predictable performance as virtual machines are added to the host.

What is the effect of applying a memory limit to these virtual machines?

- A. No physical memory will be granted above the limit, but VSWP can be used.
- B. No physical memory will be granted above the limit, unless expandableVM shares are set to high.
- C. Physical memory will be granted above the limit under normal conditions. Disk pages will be used if contention occurs.
- D. Physical memory will be granted above the limit under normal conditions, unless physical memory runs out.

**Answer: A**

**Explanation:**

#### **QUESTION NO: 142**

Which are the correct parameters to specify when adding an iSCSI target to an ESXi 5.x host using the Static Discovery tab?

- A. iSCSI server ip address, port 902
- B. iSCSI server ip address, port 3260
- C. iSCSI server ip address, port 902, iSCSI target name
- D. iSCSI server ip address, port 3260, iSCSI target name

**Answer: D**

**Explanation:**

#### **QUESTION NO: 143**

Which two options cannot be edited if vApp Options is disabled in the Options tab of a virtual machine that is part of a vApp? (Choose two.)

- A. Transient IP Addresses
- B. Configure OVF properties
- C. IPv6 Protocol
- D. IPv4 Protocol

**Answer: A,B**

**Explanation:**

**QUESTION NO: 144**

An administrator decides to implement a Fixed multipathing policy for an ESXi 5.x host with four available paths to one VMFS datastore. After the policy has been enabled for the datastore, how many paths will have an active status by default?

- A. 4
- B. 3
- C. 1
- D. 2

**Answer: A**

**Explanation:**

**QUESTION NO: 145**

An administrator is updating a program running on a virtual machine. The update file has been downloaded as an .iso file and placed on a shared NFS datastore. An attempt to mount the .iso file to the virtual machine fails, but subsequent testing shows that the .iso file can be mounted to a virtual machine running on another ESXi 5.x host.

Which step can be taken to enable access to the .iso file for the affected virtual machine?

- A. Reboot all ESXi hosts in the cluster where the affected virtual machine is running.
- B. Refresh all datastores on the ESXi host running the affected VM.
- C. Rescan all datastores on the ESXi host running the affected VM.
- D. Unmount the volume from the ESXi host running the affected VM, and then add as a new datastore.

**Answer: B**

**Explanation:**

**QUESTION NO: 146**

Which two conditions could prevent HA from powering on a virtual machine? (Choose two.)

- A. There is not enough free memory to meet the guests memory reservation.



- B. The virtual machine has been assigned a required affinity rule.
- C. Strict admission control is disabled for the HA cluster.
- D. The vCenter is hosted on the ESXi host that failed.

**Answer: A,B**

**Explanation:**

**QUESTION NO: 147**

Which two migration techniques can be used together to move a running virtual machine to a local datastore on a different server? (Choose two.)

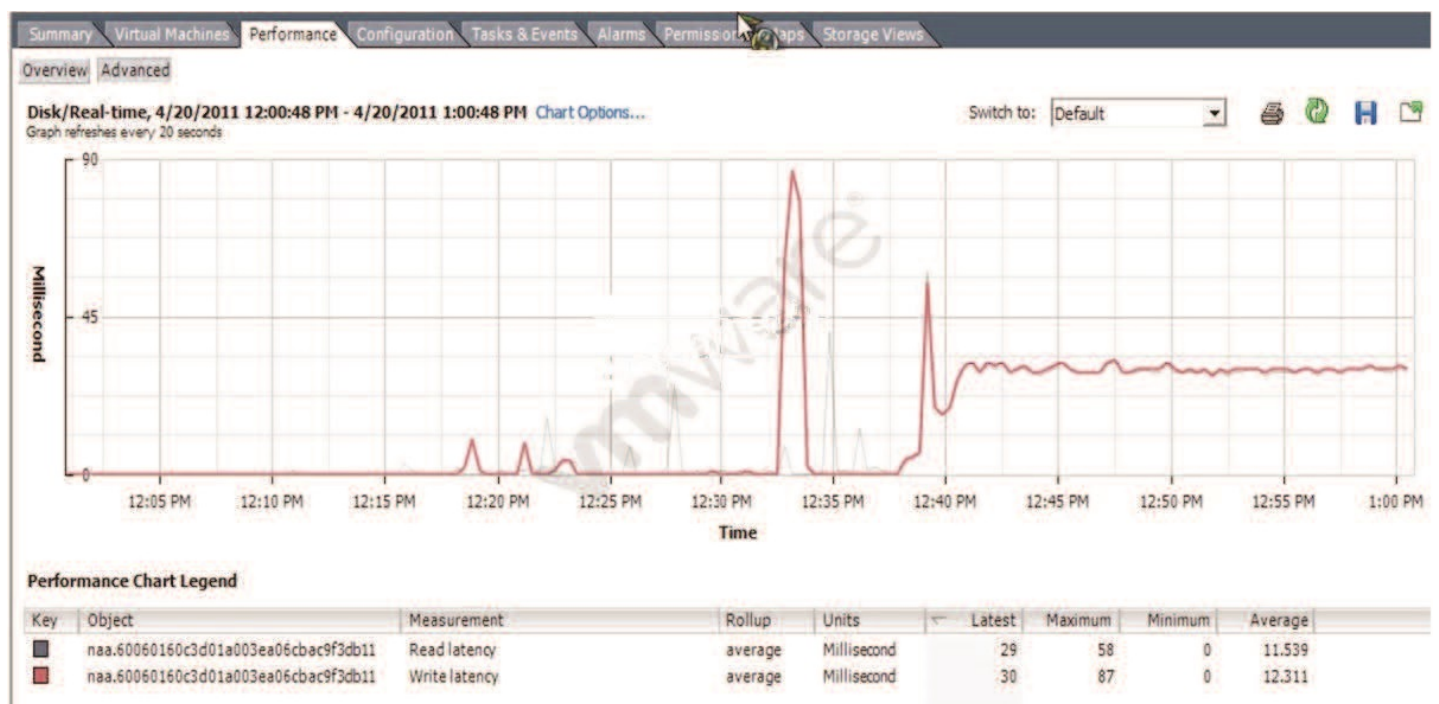
- A. Cold migration
- B. Storage vMotion
- C. vMotion
- D. vSphere Clone

**Answer: B,C**

**Explanation:**

**QUESTION NO: 148**

Click the Exhibit button.



What does the graph in the exhibit indicate?

- A. The average amount of read and write latency from the ESXi host to the SAN.
- B. The average amount of read and write latency from the guest operating system to the virtual machine virtual disk file.
- C. The average amount of read and write latency from the ESXi host to the datastore.
- D. The average amount of read and write latency from the cluster to the datastore.

**Answer: C**

**Explanation:**

#### **QUESTION NO: 149**

In vSphere, a bound physical NIC can be configured to transmit and receive jumbo frames.

What is the default maximum transmission unit (MTU) in vSphere?

- A. 1500
- B. 5500
- C. 9000
- D. 9500

**Answer: A**

**Explanation:**

#### **QUESTION NO: 150**

On which two vSphere elements can traffic shaping be configured? (Choose two.)

- A. On a vSphere Distributed Switch dvPort for inbound and/or outbound traffic
- B. On a vSphere Distributed Switch for inbound and/or outbound traffic
- C. On a vSphere Standard Switch port group or the entire vSwitch for inbound traffic
- D. On a vSphere Standard Switch port group or the entire vSwitch for inbound and outbound traffic

**Answer: A,B**

**Explanation:**

#### **QUESTION NO: 151**

In a vSphere HA cluster, what maximum number of point-to-point communication links does each