



70-210^{Q&As}

Installing, Configuring and Administering Microsoft Windows 2000 Professional

Pass Microsoft 70-210 Exam with 100% Guarantee

Free Download Real Questions & Answers **PDF** and **VCE** file from:

<https://www.passapply.com/70-210.html>

100% Passing Guarantee
100% Money Back Assurance

Following Questions and Answers are all new published by Microsoft Official Exam Center

- ⚙ **Instant Download** After Purchase
- ⚙ **100% Money Back** Guarantee
- ⚙ **365 Days** Free Update
- ⚙ **800,000+** Satisfied Customers





QUESTION 1

You need to install Windows 2000 Professional on a new computer in your network. You use the Setup Manager wizard to configure a fully automated installation script file. You begin an unattended installation and leave the office. When you return, the installation has reached the GUI-mode Setup and you see the following error message: "Unattended Setup is unable to continue because a Setup parameter specified by your system administrator or computer manufacturer is missing or invalid." You need to complete the installation. What must you do?

- A. In the Unattended section of the answer file, set the OemPreinstall property to Yes.
- B. In the NetBinding section of the answer file, specify the Enable variable.
- C. In the UserData section of the answer file, specify the ProductID variable.
- D. In the GuiUnattended section of the answer file, set the OemSkipWelcome property to 1.

Correct Answer: C

QUESTION 2

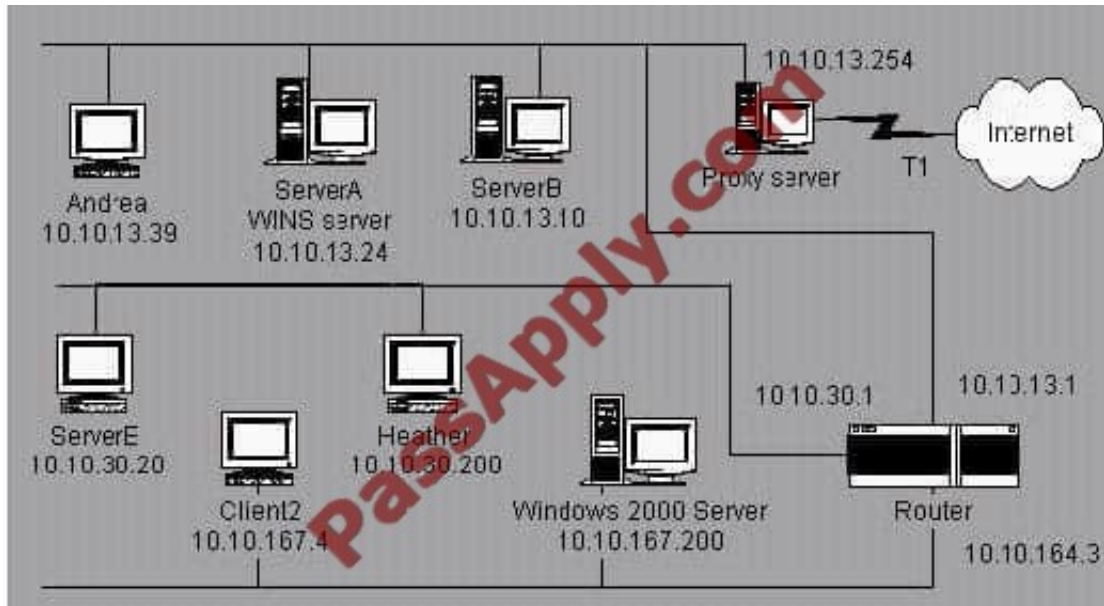
You are the administrator of your company's network. Your network has 200 Windows 2000 Professional computers and 15 Windows 2000 Server computers. Users on the network save their work files in home folders on a network server. The NTFS partition that contains the home folders has Encrypting File System (EFS) enabled. A user named John leaves the company. You move all of the files from John's home folder to his manager's folder. When the manager attempts to open any of the files, she receives the following error message: "Access denied." You want the manager to be able to access the files. What should you do?

- A. Grant the manager NTFS Full Control permission to the files.
- B. Grant the manager NTFS Take Ownership permission to the files.
- C. Log on to the network as a Recovery Agent. Decrypt the files for the manager.
- D. Log on to the network as a member of the Backup Operators group. Decrypt the files for the manager.

Correct Answer: C

QUESTION 3

You install Windows 2000 Professional on a computer named Client2. The network is configured as shown in the Network Configuration exhibit. (Click the Exhibit button.) You connect to shared resources on ServerE daily. Today, you cannot connect to ServerE. Heather can connect to ServerE successfully from her computer. You ping ServerE to find out the nature of the problem as shown in the Ping Results exhibit. (Click the Exhibit button.) You verify that all of the servers are connected to the network and are running correctly. What is the most likely cause of the problem?



- A. the router configuration
- B. the WINS configuration on Client2
- C. the WINS configuration on ServerE
- D. the default gateway setting on Client2

Correct Answer: A

QUESTION 4

You are the administrator of a Windows 2000 Professional computer that has a shared printer. Several departments in your company use the shared printer. The sales department frequently prints multiple-page presentation graphics, which take a long time to print. Users in other departments who have short messages to print must wait an unnecessarily long time for their jobs to print. You want to improve the efficiency of printing for all users who use the shared printer. You want to accomplish this with the least amount of administrative effort. What should you do?

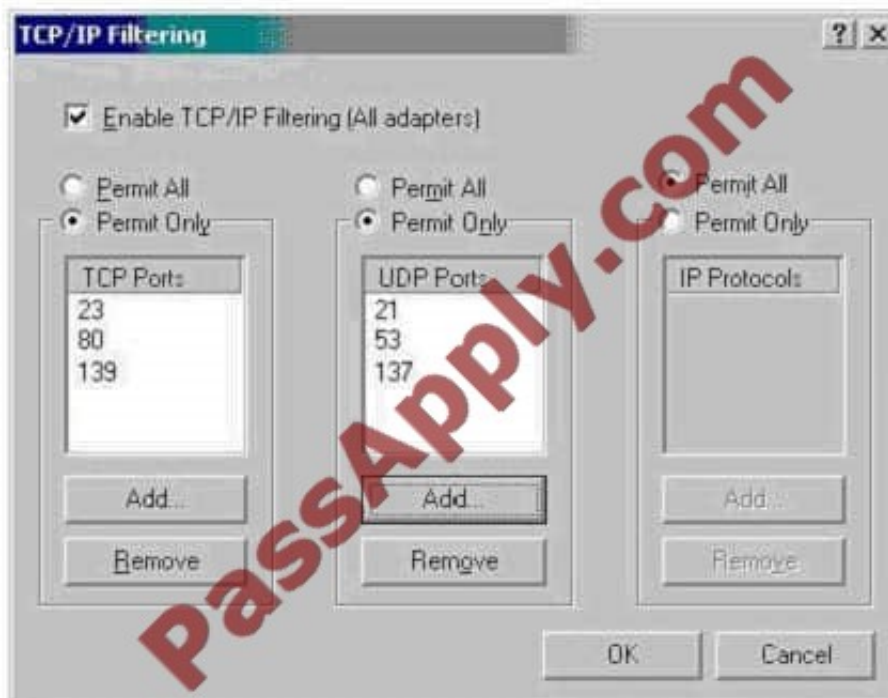
- A. Configure the priority of the printer to 50. Add a new printer, and set the priority to 1. For the new printer, deny Print permission for users in the sales department.
- B. Configure the priority of the printer to 50. Add a new printer, and set the priority to 95. For the new printer, deny Print permission for users in the sales department.
- C. Monitor the print queue, and raise the priority of all the print jobs that are sent by users who are not members of the sales department.
- D. Delete the old printer. Add a new printer, and set the priority to a higher value. Pause the print queue only when graphic-intensive print jobs are printing.

Correct Answer: A

QUESTION 5



You configure your Windows 2000 Professional computer for Internet connection Sharing and for TCP/IP filtering as shown in the exhibit. (Click the Exhibit button.) You test your TCP/IP filtering configuration from another client computer. You can access Web sites, but you cannot access FTP sites. What should you do to be able to access FTP sites?



- A. Add Port 21 to the TCP Ports section.
- B. Add Port 138 to the TCP Ports section.
- C. Add Port 21 to the IP Ports section.
- D. Add Port 138 to the IP Ports section.

Correct Answer: A

QUESTION 6

You have implemented the Hisecws.inf security template on all the Windows 2000 Professional client computers in your network. A user has received a driver and utility software for an internal SCSI controller in his computer. He uses the manufacturer-provided CD to install the driver and the utility. He restarts the computer and reports that the internal SCSI controller is not working correctly. You discover that the driver is not installed correctly. What should you do?

- A. Disable the security template. Reconfigure the Driver Signing option. Install the driver. Enable the security template.
- B. Reconfigure the Driver Signing option. Disable the security template. Install the driver. Enable the security template.
- C. Run the Sigverif command. Reconfigure the Driver Signing option. Install the driver.
- D. Run the Sigverif command. Disable the security template. Install the driver. Enable the security template.
- E. Run the Sfc /cancel command. Install the driver. Run the Sfc /enable command.



Correct Answer: A

QUESTION 7

You are the administrator of your company's network. Ten Windows 2000 Professional computers are located in the research department. The computers contain highly confidential information. You want the 10 computers to be able to communicate with other Windows 2000 computers on the network. However, you do not want the computers to communicate with computers that are not running Windows 2000, including those that are running Windows 95, Windows 98, and Windows NT. You want to configure a Security Policy on each computer to ensure that the confidential information is secure. What should you do?

- A. Use Security Configuration and Analysis to import the Hisecws.inf security template file to modify the default security settings.
- B. Use Security Templates to create a security template file and import the security settings to modify the default security settings.
- C. Use the Local Computer Policy to disable the Access this computer from the network option.
- D. Use Secedit.exe to reconfigure the computer default security settings to not allow anonymous access to the computers.

Correct Answer: A

QUESTION 8

You are creating a shared Internet connection on your Windows 2000 Professional computer. You want to enable other computers on the LAN to be able to access only HTTP and FTP sites on the Internet. What should you do? (Choose all that apply.)

- A. Configure your shared Internet connection to disable LCP extensions.
- B. Configure your shared Internet connection to disable on-demand dialing.
- C. Create an Internet Connection Sharing application type for HTTP to use remote server port 25.
- D. Create an Internet Connection Sharing application type for HTTP to use remote server port 80.
- E. Create an Internet Connection Sharing application type for FTP to use remote server port 21.
- F. Create an Internet Connection Sharing application type for FTP to use remote server port 72.

Correct Answer: DE

QUESTION 9

Your company upgrades its network to 100 Mbps. You remove the old network adapter and install a new 10/100 Mbps network adapter into a Windows 2000 Professional computer. You configure the TCP/IP protocol settings to be the same as they were for the previously installed network adapter. When you restart the computer, however, you cannot access the network. You try to ping your network adapter's TCP/IP address locally. You receive the following error message: "Request timed out." Next, you try to ping 127.0.0.1 and receive the same error message. What must you do?



- A. Configure a different TCP/IP address.
- B. Enable DHCP in the TCP/IP properties.
- C. Enable DNS in the TCP/IP properties.
- D. Configure the network adapter to run at 100 Mbps only.
- E. Replace the network adapter.

Correct Answer: E

QUESTION 10

You are the administrator of your company's network. You want to deploy a Windows 2000 Professional service pack to 10 computers in the Development organizational unit (OU). You create a Windows Installer package file for the service pack. You use the package file to successfully install the service pack to other computers in the domain. You assign the package file to the Development OU. After the installation, you notice that the service pack was not installed on any of the 10 computers. You want to ensure that the service pack is successfully installed on the computers in the Development OU. What should you do?

- A. Use Computer Management to start the Windows Installer service on all of the computers in the Development OU.
- B. Use the local Administrator account to log on to the computers in the Development OU. Then redeploy the service pack to the computers in the Development OU.
- C. Run WinINSTALL LE to repair the package file. Then redeploy the service pack to the computers in the Development OU.
- D. Add the user accounts from the Development OU to the DACL. Grant the user accounts Read permission to the service pack deployment directory.

Correct Answer: D

QUESTION 11

From your Windows 2000 Professional computer, you need to print from a 16-bit accounting application to a network printer named Printer02. Printer02 is attached to a print server named PrtSrv. The accounting application allows you to print only to a local LPT port. You currently have two printers attached to your local LPT1 and LPT2 ports. You need to be able to print to the network printer and to both local printers. You install the driver for the network printer on your computer. What must you do next to enable printing on the network printer?

- A. Create a new local printer port named PrtSrv\Printer02, and configure the printer to use the new port.
- B. Create a new local printer port named PrtSrv\Printer02. In the properties for the new port, select the option to print directly to the printer. Configure the printer to use the new port.
- C. Run the net use lpt3 \\PrtSrv\Printer02 command.
- D. Run the net print \\PrtSrv\Printer02 command.

Correct Answer: C

**QUESTION 12**

You are configuring five computers to use both Windows NT Workstation 4.0 and Windows 2000 Professional. Each computer has an 8-GB hard disk. You configure the hard disk on each computer to have two 4-GB partitions. Windows NT Workstation is installed on drive C. Windows 2000 Professional is installed on drive D. In Windows 2000 Professional, you configure a disk quota on drive D to prevent users from saving work files on the disk. You restart the computers and load Windows NT Workstation. You notice that users can still save files to drive D. You want to prevent users from saving files to drive D in either operating system. You also want to ensure that users can access both drives while using either operating system. What should you do on each computer?

- A. Use Windows 2000 Professional to configure drive D as a dynamic partition.
- B. Use Windows 2000 Professional to enable Encrypting File System (EFS) on drive D.
- C. Use Windows NT Workstation to configure NTFS permissions on drive D to deny the users Write permission.
- D. Reinstall Windows NT Workstation after configuring the disk quotas.

Correct Answer: C

[70-210 Practice Test](#)

[70-210 Exam Questions](#)

[70-210 Braindumps](#)



VCE & PDF

PassApply.com

<https://www.passapply.com/70-210.html>

2021 Latest passapply 70-210 PDF and VCE dumps Download

To Read the [Whole Q&As](#), please purchase the [Complete Version](#) from [Our website](#).

Try our product !

100% Guaranteed Success

100% Money Back Guarantee

365 Days Free Update

Instant Download After Purchase

24x7 Customer Support

Average 99.9% Success Rate

More than 800,000 Satisfied Customers Worldwide

Multi-Platform capabilities - [Windows](#), [Mac](#), [Android](#), [iPhone](#), [iPod](#), [iPad](#), [Kindle](#)

We provide exam PDF and VCE of Cisco, Microsoft, IBM, CompTIA, Oracle and other IT Certifications.
You can view Vendor list of All Certification Exams offered:

<https://www.passapply.com/allproducts>

Need Help

Please provide as much detail as possible so we can best assist you.

To update a previously submitted ticket:



 One Year Free Update Free update is available within One Year after your purchase. After One Year, you will get 50% discounts for updating. And we are proud to boast a 24/7 efficient Customer Support system via Email.	 Money Back Guarantee To ensure that you are spending on quality products, we provide 100% money back guarantee for 30 days from the date of purchase.	 Security & Privacy We respect customer privacy. We use McAfee's security service to provide you with utmost security for your personal information & peace of mind.
---	---	--

Any charges made through this site will appear as Global Simulators Limited.

All trademarks are the property of their respective owners.

Copyright © passapply, All Rights Reserved.