



642-515^{Q&As}

Securing Networks with ASA Advanced

Pass Cisco 642-515 Exam with 100% Guarantee

Free Download Real Questions & Answers **PDF** and **VCE** file from:

<https://www.passapply.com/642-515.html>

100% Passing Guarantee
100% Money Back Assurance

Following Questions and Answers are all new published by Cisco
Official Exam Center

-  **Instant Download** After Purchase
-  **100% Money Back** Guarantee
-  **365 Days** Free Update
-  **800,000+** Satisfied Customers





QUESTION 1

Refer to the exhibit. You have configured a Layer 7 policy map to match the size of HTTP header fields that are traversing the network. Based on this configuration, will HTTP headers that are greater than 200 bytes be logged?

```
policy-map type inspect http TEST
  parameters
  match request header length gt 100
  reset
  match request header length gt 200
  log
```

- A. No, because the reset action for headers greater than 100 bytes would be the first match.
- B. Yes, because the log action for headers greater than 200 bytes would be the last match.
- C. Yes, because the reset action for headers greater than 100 bytes and the log action for headers greater than 200 bytes would both be applied.
- D. No, because reset or log actions are a part of the service policy and the Layer 7 policy map.

Correct Answer: A

QUESTION 2

Recently, a branch office of your company has upgraded its network by changing the network topology of the branch, and the site-to-site VPN tunnel that runs between the branch and the corporate office has been reconfigured to perform Reverse Route Injection to accommodate the recent change. You are performing OSPF between the corporate Cisco ASA security appliance and routers on the internal network. Assume that the VPN configuration is correct, which step will be taken on the corporate Cisco ASA security appliance to make sure that these new routes are visible to internal routers running OSPF?

- A. Reverse Route Injection uses RIP, so you must add a RIP process and redistribute the learned RIP routes into OSPF.
- B. Reverse Route Injection requires that you configure a new OSPF process that will add these routes to the Cisco ASA security appliance routing table.
- C. Reverse Route Injection uses static routes, so you must configure OSPF to redistribute the static routes.
- D. Reverse Route Injection uses EIGRP, so you must add an EIGRP process and redistribute the learned EIGRP routes into OSPF.



E. Reverse route injection requires that you add a static route for each branch-office network to the Cisco ASA security appliance routing table.

Correct Answer: C

QUESTION 3

Which three commands can display the contents of flash memory on the Cisco ASA adaptive security appliance? (Choose three.)

- A. show disk0:
- B. dir
- C. show flash:
- D. show memory

Correct Answer: ABC

QUESTION 4

Clientless SSL VPN (WebVPN) allows a user to securely access resources on the corporate LAN from anywhere with an SSL-enabled Web browser. You are asked to configure Telnet port forwarding to a specific server on the clientless SSL VPN portal. A clientless SSL VPN user has called to complain that after she starts the application helper, her attempts to establish a Telnet connection to 10.0.4.3 time out. If the clientless SSL VPN configuration is correct, which type of Telnet connection would you have the end user make?



Close this window when you finish using Application Access.
Please wait for the table to be displayed before starting applications.

If you shut down your computer without closing this window, you might later have problems running the applications listed below. [Click here for details.](#)

Name	Local	Remote	Bytes Out	Bytes In	Sockets
Telnet to Cisco ...	127.0.0.1:2300	10.0.4.3:23	0	0	1

[Reset Byte Counters](#)

Applet WebVpnPortForward started

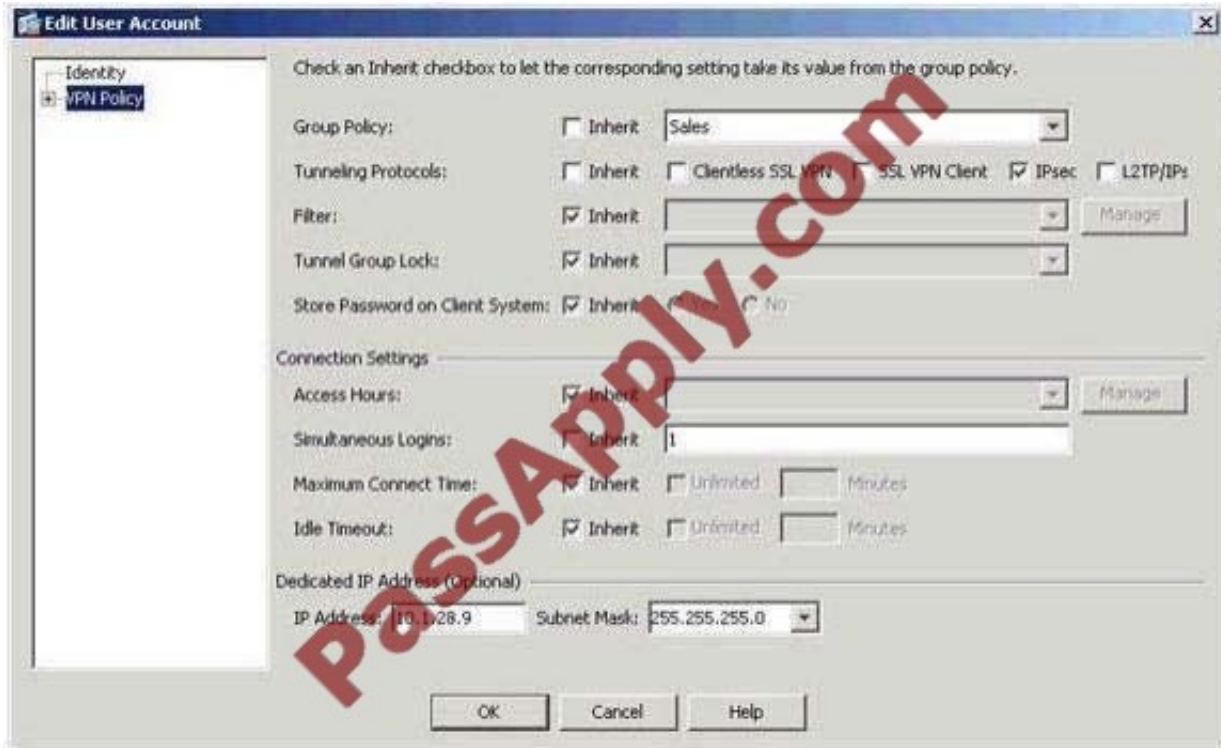
Internet

- A. to 127.0.0.1 on TCP port 2300
- B. to 10.0.4.3 on TCP port 23
- C. to 127.0.0.1 on TCP port 23
- D. to 10.0.4.3 on TCP port 2300

Correct Answer: A

QUESTION 5

Refer to the exhibit. An administrator is editing user-specific policy. The administrator has configured a group policy for Sales to use the IP address pool that is defined by the pool VPNPOOL and to allow as many as three simultaneous logins. Based on the exhibit, when this user connects, what will be the IP address assigned to the connection and what will be the number of simultaneous logins allowed for this user? (Choose two.)



- A. The user will receive an IP address from the VPNPOOL.
- B. The user will be allowed to make only one connection.
- C. The user will be allowed to make connections up to the limit that is defined in the default group policy.
- D. The user will be assigned the IP address from the user-specific policy.
- E. The user will be allowed to make as many as three simultaneous connections
- F. The user will receive an IP address from the address pool that is defined in the default group policy.

Correct Answer: BD

QUESTION 6

For configuring VLAN trunking on a security appliance interface, which three actions are mandatory? (Choose three.)

- A. associating a logical interface with a physical interface
- B. specifying a VLAN ID for asubinterface
- C. specifying a name for asubinterface
- D. specifying the maximum transmission unit for asubinterface

Correct Answer: ABC



QUESTION 7

You work as a network engineer for your company. Recently, you have been tasked with verifying the Cisco ASA security appliance interfaces that are used for a web connection from the Internet to a DMZ web server. According to the presented Configuration > Device Setup > Interfaces pane, which two interfaces will a connection traverse when it is coming from the Internet and connecting to the web server with the IP address 172.16.20.10? (Choose two.)

Configuration > Device Setup > Interfaces

Interface	Name	Enabled	Security Level	IP Address	Subnet Mask	Redundant	Member	M
GigabitEthernet0/0	outside	Yes	0	192.168.1.2	255.255.255.0	No	No	
GigabitEthernet0/1	inside	Yes	100	10.0.1.1	255.255.255.0	No	No	
GigabitEthernet0/2		Yes				No	No	
GigabitEthernet0/3		No				No	No	
Management0/0	managem...	Yes	100	192.168.10.1	255.255.255.0	No	No	
GigabitEthernet0/2.10	public_dmz	Yes	50	172.16.10.1	255.255.255.0	No	No	
GigabitEthernet0/2.20	partner_d...	Yes	50	172.16.20.1	255.255.255.0	No	No	
GigabitEthernet0/2.30	corp_dmz	Yes	50	172.16.30.1	255.255.255.0	No	No	

Enable traffic between two or more interfaces which are configured with same security levels
 Enable traffic between two or more hosts connected to the same interface

Apply Reset

- A. GigabitEthernet0/2.30
- B. Management0/0
- C. GigabitEthernet0/2.20
- D. GigabitEthernet0/0
- E. GigabitEthernet0/1
- F. GigabitEthernet0/2.10

Correct Answer: CD



QUESTION 8

Refer to the exhibit. What does Reverse Route Injection enable in this configuration?



- A. The Cisco ASA security appliance will advertise routes that are at the distant end of the site-to-site VPN tunnel.
- B. The Cisco ASA security appliance will advertise its default routes to the distant end of the site-to-site VPN tunnel.
- C. The Cisco ASA security appliance will advertise routes that are on its side of the site-to-site VPN tunnel to the distant end of the site-to-site VPN tunnel.
- D. The Cisco ASA security appliance will advertise routes from the dynamic routing protocol that is running on the Cisco ASA security appliance to the distant end of the site-to-site VPN tunnel.

Correct Answer: A

QUESTION 9

Observe the exhibit carefully. You are asked to review the configuration of the clientless SSL VPN connection profile, which was created by a junior administrator. Which authentication method is configured in the clientless profile?



- A. The Cisco ASA security appliance requires AAA authenticate to the external AAA server LOCAL if the remote user does not have an identity certificate for authentication.
- B. The Cisco ASA security appliance requires a username and password if the remote user does not have an identity certificate for authentication.
- C. The Cisco ASA security appliance accepts an identity certificate or a username and password for authentication of remote users, but not both.
- D. The Cisco ASA security appliance requires both an identity certificate and username and password for authentication of remote users.

Correct Answer: D

QUESTION 10

Annie is a network administrator of her company. She is responsible for a Cisco ASA security appliance. Using a valid identity certificate from her certificate authority, she has created the necessary configuration for remote-access VPN tunnels by use of the IPsec VPN Wizard. When she tests the remote-access VPN, the VPN tunnel does not come up. If the remote-access VPN configuration created by the wizard is correct and valid certificates are being used by the Cisco ASA security appliance and Cisco VPN Client, which corrective action should be configured or corrected for the VPN tunnel to come up properly?

- A. The IKE phase two configuration is not part of the IPsec VPN Wizard configuration and must be configured.
- B. NAT-Transparency configuration is not part of the IPsec VPN Wizard configuration and must be configured.
- C. The IKE phase one configuration is not part of the IPsec VPN Wizard configuration and must be configured.
- D. The mapping of digital certificates to connection profile is not part of the IPsec VPN Wizard configuration and must be configured.
- E. The crypto ACL configuration is not part of the IPsec VPN Wizard configuration and must be configured.

Correct Answer: D

QUESTION 11

You have configured two SSL VPN certificate-to-connection profile mappings for all users and Sales users. The connection profiles for the Sales users are not being applied when the users connect. Based on the configuration that is shown, what would cause this issue?



- A. The priority of the RASSL4SALES mapping is too high and needs to be lower than the priority of the RASSL4ALL mapping.
- B. The priority of the RASSL4ALL mapping is too low and it needs to be increase but not more than the priority of the RASSL4SALES mapping.
- C. The priority of the RASSL4ALL mapping is not low enough and it needs to be lowered to 1.
- D. The matching criteria for the RASSL4SALES mapping is too specific and should match something more generic.

Correct Answer: A

QUESTION 12

Refer to the exhibit. You are the administrator of a Cisco ASA security appliance with a Cisco ASA CSC- SSM. You have upgraded the CSC-SSM with a new version of software. When the upgrade has finished, you issue the show module 1 detail command; the results of the command are shown in the exhibit. Why does the command output show that the status of the CSC-SSM is "Up" when it is not activated?

```
corpasa(config)# show module 1 detail
Getting details from the Service Module, please wait...
ASA 5500 Series Content Security Services Module-10
Model:                ASA-SSM-CSC-10
Hardware version:     1.0
Serial Number:        JAF10311713
Firmware version:     1.0(11)2
Software version:     CSC SSM 6.2.1599.0
MAC Address Range:   0018.19eb.aa37 to 0018.19eb.aa37
App. name:            CSC SSM
App. Status:          Down
App. Status Desc:    CSC SSM scan services are not available
App. version:         6.2.1599.0
Data plane Status:   Up
Status:               Up
HTTP Service:         Down
Mail Service:         Down
FTP Service:          Down
Activated:            No
Mgmt IP addr:         <not available>
Mgmt web port:        8443
Peer IP addr:         <not enabled>
```

- A. The software upgrade image has failed to load properly.
- B. The software upgrade image is not the correct software image for the CSC-SSM.
- C. The software upgrade image loaded successfully but the CSC-SSM has not had its license applied.
- D. The CSC-SSM cannot communicate with the network and therefore cannot apply its configuration to network traffic.
- E. The CSC-SSM is in the administrative down state and is waiting to be changed to the administrative up state.



Correct Answer: C

[642-515 Practice Test](#)

[642-515 Study Guide](#)

[642-515 Exam Questions](#)



To Read the [Whole Q&As](#), please purchase the [Complete Version](#) from [Our website](#).

Try our product !

100% Guaranteed Success
100% Money Back Guarantee
365 Days Free Update
Instant Download After Purchase
24x7 Customer Support
Average 99.9% Success Rate
More than 800,000 Satisfied Customers Worldwide
Multi-Platform capabilities - [Windows](#), [Mac](#), [Android](#), [iPhone](#), [iPod](#), [iPad](#), [Kindle](#)

We provide exam PDF and VCE of Cisco, Microsoft, IBM, CompTIA, Oracle and other IT Certifications. You can view Vendor list of All Certification Exams offered:

<https://www.passapply.com/allproducts>

Need Help

Please provide as much detail as possible so we can best assist you.
To update a previously submitted ticket:



 <p>One Year Free Update Free update is available within One Year after your purchase. After One Year, you will get 50% discounts for updating. And we are proud to boast a 24/7 efficient Customer Support system via Email.</p>	 <p>Money Back Guarantee To ensure that you are spending on quality products, we provide 100% money back guarantee for 30 days from the date of purchase.</p>	 <p>Security & Privacy We respect customer privacy. We use McAfee's security service to provide you with utmost security for your personal information & peace of mind.</p>
---	---	--

Any charges made through this site will appear as Global Simulators Limited.
All trademarks are the property of their respective owners.
Copyright © passapply, All Rights Reserved.