

**Exam** : **642-371**

**Title** : Foundation Express for  
Systems  
Engineers(FOUNDSE)

**Version** : DEMO

**1.How does the Cisco IOS IPS feature set monitor the network for malicious activity?**

- A.passive "bird-on-a-wire" packet inspection
- B.deep inline packet inspection
- C.Security Device Event Exchange (SDEE) packet inspection
- D.out-of-band (OOB) packet inspection

**Correct:B**

**2.What are three benefits that companies gain with intelligent networking based on Cisco IOS network infrastructure? (Choose three.)**

- A.a fully integrated network
- B.a network requiring fewer networking devices
- C.an adaptive network
- D.a more resilient network
- E.a completely fault-tolerant network

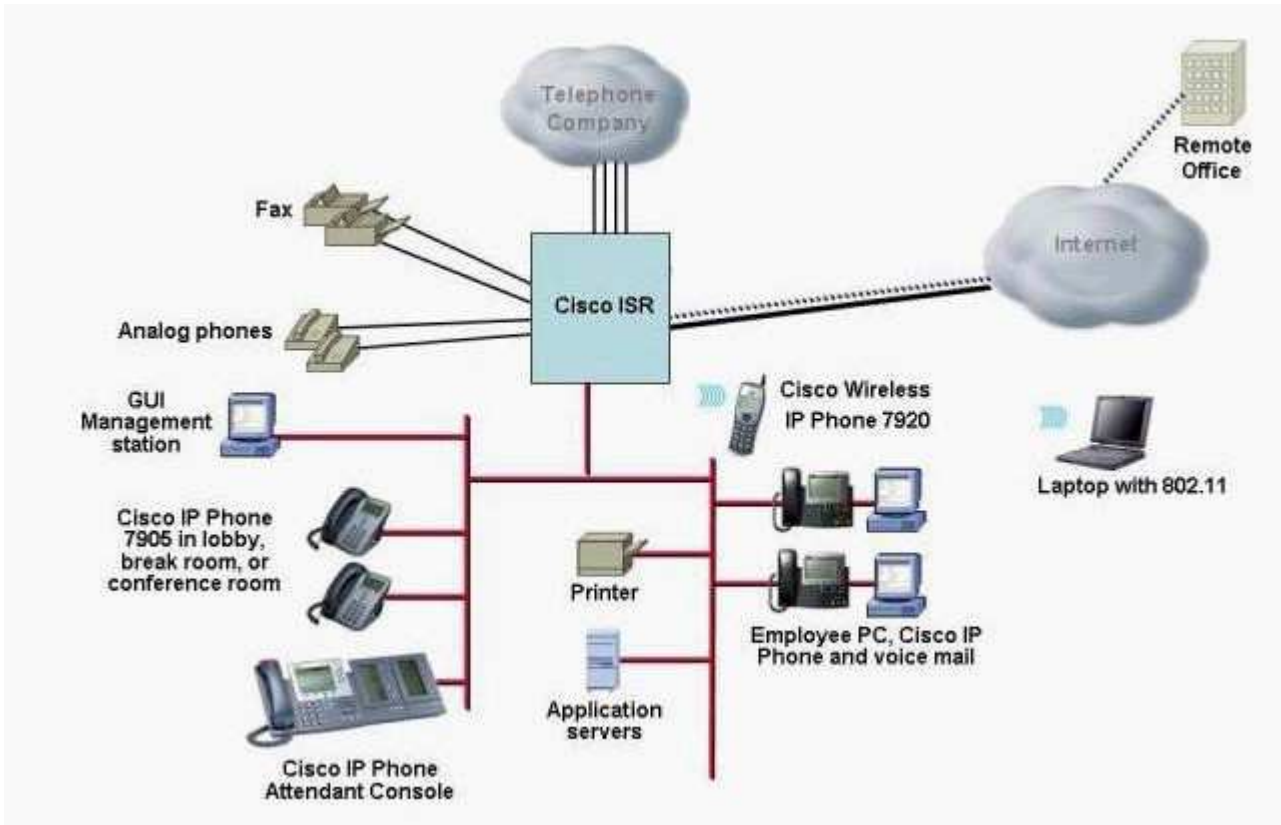
**Correct:A C D**

**3.Your customer has a basic stateful firewall setup that only permits incoming traffic from the Internet to an internal web server. What are the security risks if the firewall being used does not perform advanced application inspection and control like the ASA Security Appliance does? (Choose two.)**

- A.Allowing all return traffic from the internal web server back out to the Internet may increase the risk of worm propagation.
- B.Peer-to-peer or instant messaging traffic using port 80 may exhaust the network capacity.
- C.Not validating port 80 traffic content may increase the risk of malware infection.
- D.Denial of service attacks launched against port 80 of the internal web server can bring down the web server.
- E.If the firewall cannot perform deep packet inspection, the firewall cannot properly classify the HTTP and HTTPS traffic. This may lead to connectivity issues from the Internet to the internal web server.

**Correct:B C**

**4.Refer to the exhibit. Deploying integrated services on the Cisco ISR Router can help reduce network cost and complexity by integrating which four of these features on the ISR? (Choose four.)**



- A.firewall and VPN
- B.IP telephony and voice mail
- C.Secure Access Control Server
- D.LAN switching and Wireless LAN
- E.IPS
- F.Anomaly Guard and Detection

**Correct:A B C E**

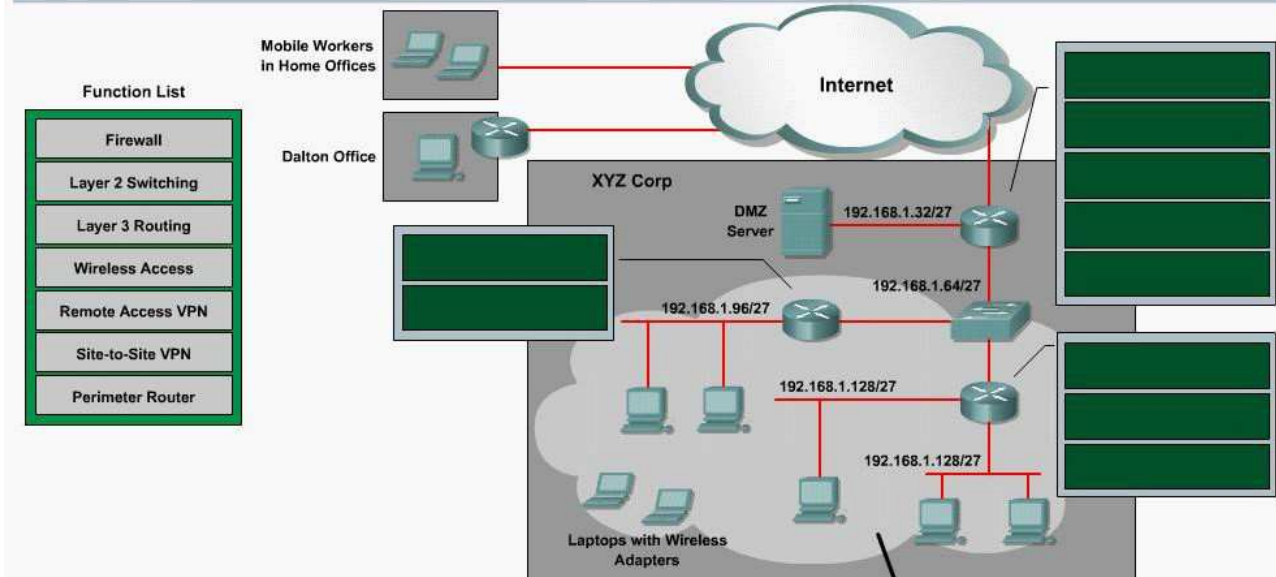
**5.Which two of these statements best describe fast secure roaming for the wireless core feature set using autonomous access points? (Choose two.)**

- A.It is compatible with all wireless clients.
- B.It reduces roaming latency through reduced client RF channel scanning enhancements.
- C.It reduces roaming latency to targeted times of less than 75ms.
- D.Roaming occurs without reauthentication through a centralized RADIUS server.
- E.It is enabled through WLSE deployment.

**Correct:B D**

**6.LAB**

The XYZ Corp. has a network that consists of the corporate office, one remote site in Dalton and several home offices. The Main office site must support connectivity to local hardwired users and campus wide roaming wireless users. The corporate office must also provide connectivity to the Dalton office and the home offices. The XYZ Corp. is using the Internet to provide this connectivity. Communications between these sites must be secure. The Dalton office requires 7x24 access while the home offices require on-demand access. You are implementing the network design shown in the diagram based upon ISR routers. Identify the function of each router by dragging and dropping the function into the box next to each router. You may drag the same function to more than one router.



**Correct:**

**7.A customer is deploying a wireless core feature set using autonomous access points and requires Layer 2 roaming. What is a requirement when deploying this solution?**

- A.a minimum of one Cisco 4100 Series WLAN Controller
- B.one WDS per subnet
- C.a minimum of one Wireless LAN Services Module
- D.all clients using Cisco Aironet Wireless LAN Adapters

**Correct:B**

**8.Which of these is the Cisco IOS Firewall feature that creates specific security policies for each user with LAN-based, dynamic, per-user authentication and authorization?**

- A.DDoS Mitigation
- B.Cisco Security Agent
- C.Intrusion Prevention System
- D.Authentication Proxy
- E.Context-based Access Control
- F.Monitoring, Analysis and Response System

**Correct:D**

**9.What are three components of the wireless core feature set using autonomous access points? (Choose three.)**

- A.CiscoWorks WLSE
- B.Wireless LAN Controller
- C.lightweight access points
- D.802.1X authentication server
- E.Wireless Control System
- F.Cisco autonomous access points running WDS

**Correct: A D F**

**10. A customer plans to implement a wireless core feature set using autonomous access points.**

**When choosing the access points, what is required for the customer to implement WDS?**

- A. Client cards must be using Cisco's LEAP authentication.
- B. All APs must support 802.1X for registration with WDS.
- C. WDS must be enabled on all APs in the WLAN.
- D. The customer must have a WLSM blade in their Cisco Catalyst 6000.

**Correct: B**

# Trying our product !

- ★ **100%** Guaranteed Success
- ★ **100%** Money Back Guarantee
- ★ **365 Days** Free Update
- ★ **Instant Download** After Purchase
- ★ **24x7** Customer Support
- ★ Average **99.9%** Success Rate
- ★ More than **69,000** Satisfied Customers Worldwide
- ★ Multi-Platform capabilities - **Windows, Mac, Android, iPhone, iPod, iPad, Kindle**

## Need Help

Please provide as much detail as possible so we can best assist you.

To update a previously submitted ticket:



 <b>One Year Free Update</b> <p>Free update is available within One Year after your purchase. After One Year, you will get 50% discounts for updating. And we are proud to boast a 24/7 efficient Customer Support system via Email.</p>	 <b>Money Back Guarantee</b> <p>To ensure that you are spending on quality products, we provide 100% money back guarantee for 30 days from the date of purchase.</p>	 <b>Security &amp; Privacy</b> <p>We respect customer privacy. We use McAfee's security service to provide you with utmost security for your personal information &amp; peace of mind.</p>
---	---	--

## Guarantee & Policy | Privacy & Policy | Terms & Conditions

Any charges made through this site will appear as Global Simulators Limited.

All trademarks are the property of their respective owners.

Copyright © 2004-2014, All Rights Reserved.