



# 352-011<sup>Q&As</sup>

Cisco Certified Design Expert Practical

## Pass Cisco 352-011 Exam with 100% Guarantee

Free Download Real Questions & Answers **PDF** and **VCE** file from:

<https://www.passapply.com/352-011.html>

100% Passing Guarantee  
100% Money Back Assurance

Following Questions and Answers are all new published by Cisco  
Official Exam Center

- ⚙ **Instant Download** After Purchase
- ⚙ **100% Money Back** Guarantee
- ⚙ **365 Days** Free Update
- ⚙ **800,000+** Satisfied Customers





### QUESTION 1

Which statement about SDN framework environment is true?

- A. The control plane functions is split between a SDN controller and the networking element
- B. The data plane is pulled from the networking element and put in a SDN controller
- C. The data plane is controlled by a centralized SDN element
- D. The control plane is pulled from the networking element and put in a SDN controller
- E. The control plane and data plane is pulled from the networking element and put in a SDN controller and SDN agent

Correct Answer: D

---

### QUESTION 2

When a multiprotocol routing environment is designed to have several routers redistributing among the routing domains, how can routing loops be avoided?

- A. By implementing spanning tree
- B. By activating split horizon
- C. By using the AS-path attribute
- D. By using route tags

Correct Answer: D

---

### QUESTION 3

Your customer asks you to assist with their traffic policy design. They want to guarantee a minimum amount of bandwidth to certain traffic classes. Which technique would you advise them to implement?

- A. Modular QoS CLI
- B. committed access Rate
- C. policy-based routing
- D. traffic shaping

Correct Answer: A

---

### QUESTION 4

Which two functions are performed at the distribution layer of the three-layer hierarchical network design model?



(Choose two)

- A. Fast transport
- B. QoS classification and marking boundary
- C. Fault isolation
- D. Redundancy and load balancing
- E. Reliability

Correct Answer: CD

### QUESTION 5

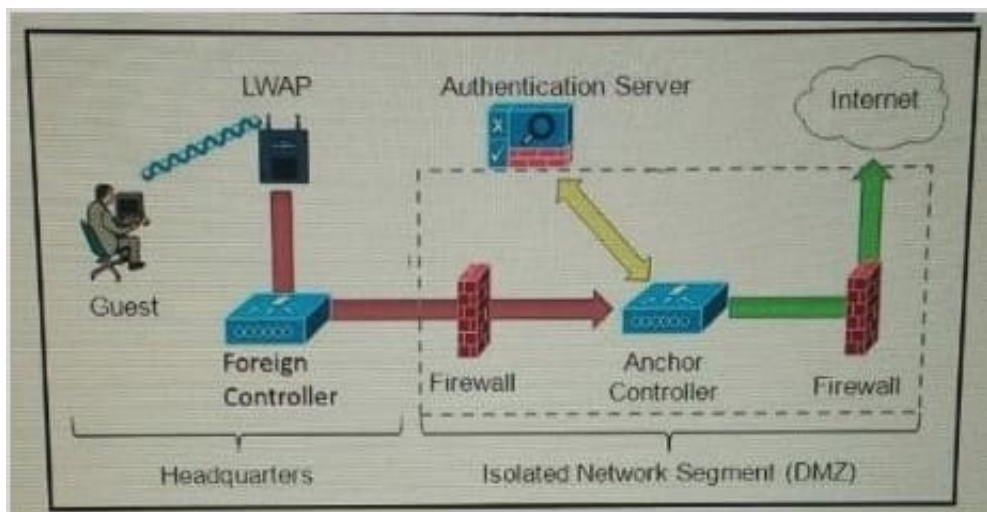
Your customer recently acquired a company with a national WAN of 750 locations consisting of MPLS VPN-based sales, Internet-based sites and sites with direct links to regional hub sites. The existing network has MPLS VPN-based sites. Which solution ensure security and encryption across all sites to meet an audit requirement?

- A. Implement a hierarchical DMVPN-based hub-and-spoke network with IPsec encryption
- B. Migrate newly acquired sites to the MPLS VPN-based service of the parent company
- C. Implement a GETVPN-based solution across all sites with selective traffic encryption
- D. Implement a GETVPN-based solution across all sites with redundant key servers

Correct Answer: A

### QUESTION 6

Refer to the exhibit.



Which solution must be used to send traffic from the foreign wireless LAN controller to the anchor wireless LAN controller?



- A. Encapsulate packets into an EoIP tunnel and send them to the anchor controller
- B. Send packets from the foreign controller to the anchor controller via Layer 3 MPLS VPN or VRF-Lite
- C. Send packets from the foreign controller to the anchor controller via IPinIP or IPsec tunnel
- D. Send packets without encapsulation to the anchor controller over the routed network

Correct Answer: A

---

#### QUESTION 7

An enterprise network has two core routers that connect to 200 distribution routers and uses full-mesh iBGP peering between these routers as its routing method. The distribution routers are experiencing high CPU utilization due to the BGP process. Which design solution is the most effective?

- A. Increase the memory on the distribution routers
- B. Increase the memory on the core routers
- C. Implement route reflectors on the two core routers
- D. Increase bandwidth between the core routers
- E. Implement eBGP between the core and distribution routers

Correct Answer: C

---

#### QUESTION 8

An enterprise customer A with provider-independent address space is dual-homed to two ISP. Which two options , when combined, allow for customer A to efficiently achieve out- bond traffic load-balancing? ( Choose two)

- A. Advertise Customer A subnets with a shorter AS path prepend to one of the ISPs than to the other
- B. Advertise Customer A subnets with different MED values to the two ISPs
- C. Accept a default route from both ISPs
- D. Make the CE connected to both ISPs route reflector
- E. Accept the routes originated on both ISPs and their direct peers

Correct Answer: CE

---

#### QUESTION 9

Which native mechanism does OSPF use to prevent loops in MPLS VPNs?

- A. CE devices that run OSPF set the DN bit toward the PE router



- B. PE devices that run OSPF clear the DN bit toward the CE router
- C. CE devices that run OSPF clear the DN bit toward the PE router
- D. Creation of PE to PE OSPF sham link across the MPLS-created super backbone
- E. PE routers verify OSPF domain IDs used by CE OSPF processes
- F. PE devices that run OSPF set the DN bit toward the CE router

Correct Answer: F

---

#### QUESTION 10

You are designing a WAN network solution with EIGRP based on VPLS. The interface speed is 10Mb/s, but the access rate of the WAN connection is 256 Kb/s. What should you include in the network design, in order to avoid potential issues with EIGRP?

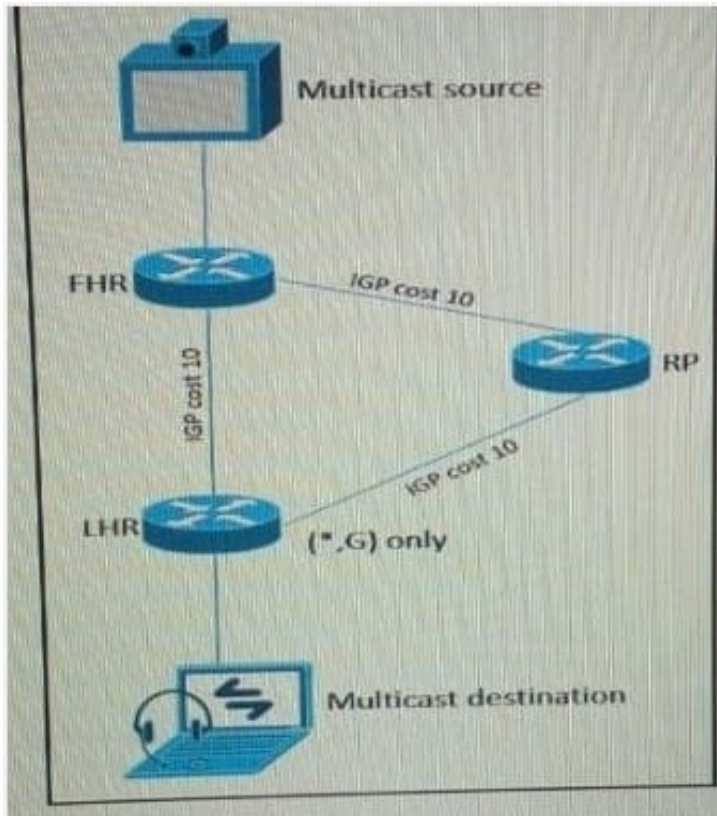
- A. Limit EIGRP traffic to the access rate with a policer.
- B. Tag outbound EIGRP traffic and have the WAN provider add it to the priority queue.
- C. Limit traffic to the access rate with interface traffic shaping.
- D. Set the interface bandwidth to match the access rate.

Correct Answer: D

---

#### QUESTION 11

Refer to the exhibit.



As part of a redesign project, you must predict multicast behavior. What is the resultant multicast traffic receiving on the shared tree( , G), if it is received on the LHR interface indicated?

- A. It is dropped due to an unsuccessful RPF check against the multicast receiver
- B. It is switched due to a successful RPF check against the routing table
- C. It is switched given that no RPF check is performed
- D. It is dropped due to an unsuccessful RPF check against the multicast source

Correct Answer: B

## QUESTION 12

The service provider that you work for wants to offer IPv6 internet service to its customers without upgrading all of its access equipment to support IPv6, which transition technology do you recommend?

- A. NAT64
- B. CGN
- C. Dual-stack CPE
- D. 6RD

Correct Answer: D



### QUESTION 13

How can a network designer reduce the amount of LSA flooding occurring in a large, single area fully-meshed OSPF topology?

- A. Implemented passive OSPF interfaces on the routers not participating on the DR/BDR election.
- B. Use access control lists to control outbound advertisements.
- C. Ensure DR and BDR routers are placed optimally in the topology.
- D. Place all point-to-point links in their own dedicated areas.

Correct Answer: C

---

### QUESTION 14

When is it required to leak routes into an IS-IS Level 1 area?

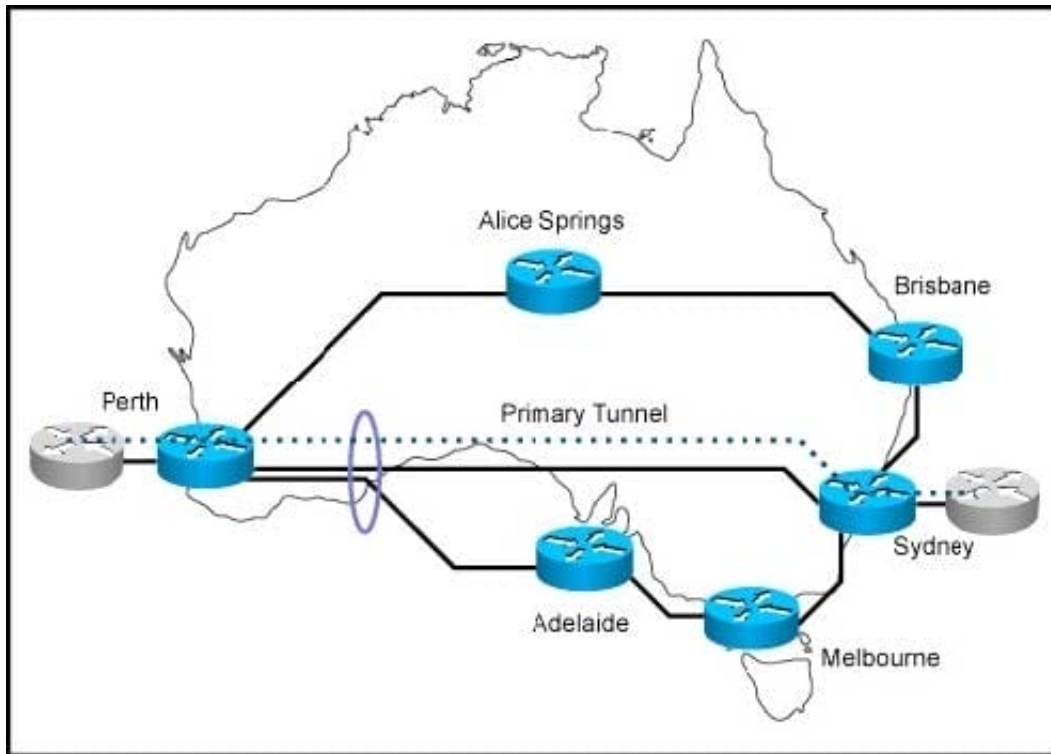
- A. when equal cost load balancing is required between the backbone and non-backbone areas
- B. when unequal cost load balancing is required between the backbone and non-backbone areas
- C. when MPLS L3VPN PE devices are configured in the Level 1 areas
- D. when a multicast RP is configured in the non-backbone area

Correct Answer: C

---

### QUESTION 15

Refer to the exhibit.



You are designing MPLS-TE for this network. The links from Perth to Sydney and from Perth to Adelaide share the same optical fiber in one given segment. Which feature should you implement to eliminate the risk that a backup tunnel is installed over the same optical fiber as the primary one?

- A. Shared Risk Link Groups
- B. MPLS-TE Path Protection
- C. MPLS-TE auto-tunnel backup
- D. MPLS-TE Link protection

Correct Answer: A

[Latest 352-011 Dumps](#)

[352-011 PDF Dumps](#)

[352-011 Exam Questions](#)