



1Z0-141^{Q&As}

Oracle9i forma Developer:build internet applications

Pass Oracle 1Z0-141 Exam with 100% Guarantee

Free Download Real Questions & Answers **PDF** and **VCE** file from:

<https://www.passapply.com/1Z0-141.html>

100% Passing Guarantee
100% Money Back Assurance

Following Questions and Answers are all new published by Oracle
Official Exam Center

-  **Instant Download** After Purchase
-  **100% Money Back** Guarantee
-  **365 Days** Free Update
-  **800,000+** Satisfied Customers





QUESTION 1

Which statement is true about built-ins that invoke one form from another?

- A. CALL_FORM cannot be issued while in Enter-Query mode.
- B. CALL_FORM does not issue a savepoint.
- C. NEW_FORM invokes the second form in a modal state so the user can navigate freely between the two running forms.
- D. NEW_FORM improves performance but consumes more memory because the first form is retained in memory and returning to it is more efficient than reloading it.
- E. OPEN_FORM invokes the second form in a modeless state and optionally within a different transaction scope.
- F. OPEN_FORM is the only way to invoke the second form in "query only" mode.

Correct Answer: E

QUESTION 2

View the Exhibit.

You are running the Employees form in debug mode and stepping through a procedure (as shown in the exhibit). You know that the stored function RAISE_SALARIES performs the correct calculation.

Which Forms Builder menu item from the Debug menu should you select to position the marker on the line of code that begins as follows?

```
IF :employees.salary > 2000
```



```
PL/SQL Editor
Name: RAISE_SALARY (Procedure Body)
Type: Program Unit
Object:

PROCEDURE raise_salary IS
  good_percent boolean;
BEGIN
  good_percent := check_percent (:control.raise_percent);
  IF good_percent THEN
    :employees.salary :=
      raise_salaries (:control.raise_percent,
                    :employees.salary);
  IF :employees.salary > 2000
      AND :employees.job_id like 'ISCLER%' THEN
```

- A. Go
- B. Step Into
- C. Step Over
- D. Step Out
- E. Stop

Correct Answer: C

QUESTION 3

Your company assigns three possible credit ratings to customers: Poor, Good, and Excellent (represented numerically by 1, 2, and 3). The DBA has just added a RATING column to the CUSTOMERS table and has asked you to add an item to your form so that credit ratings can be recorded. To restrict data entry clerks to one of these three values, you decide to create a radio group for the Rating item. You want to allow for an undetermined (Null) credit rating, and users should be able to update the credit rating from a value to an undetermined rating.

How can you implement this?

- A. Create three radio buttons for each of the credit ratings, and set the Mapping of Other Values for the radio group to Null.
- B. Create three radio buttons for each of the credit ratings, and set the Mapping of Other Values for the radio group to one of the credit rating values.
- C. Create four radio buttons, and leave blank the value for the undetermined credit rating.
- D. Choose a different type of input item, because radio groups do not allow entry and update of null values.



Correct Answer: C

QUESTION 4

View the Exhibit to examine the form.

The text items (Field1, Field2, and Field3) and the button (Check_Values) are in the CONTROL block. The Mouse Navigate property of the button has been set to No.

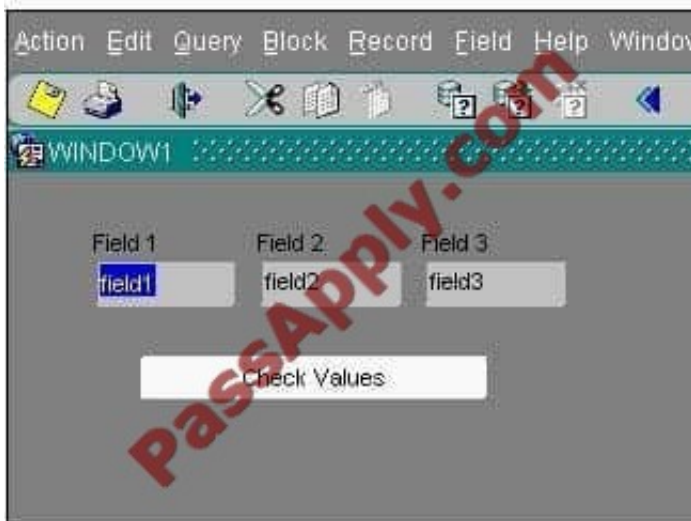
The following code has been written in a When-Button-Pressed trigger on the Check_Values button:

```
MESSAGE(:field1||'\ ' - \\\|
```

```
NAME_IN(:SYSTEM.cursor_item)||'\ ' - \\\|
```

```
NAME_IN(\\SYSTEM.cursor_item\\));
```

With the focus in FIELD1, and the values field1, field2, and field3 in the text items, what message will be displayed when the button is clicked?



- A. field1 - field1 - field1
- B. field1 - field2 - field3
- C. field1 - field2 - Check Values
- D. field1 - field1 - Check Values
- E. field1 - field1 - CONTROL.FIELD1
- F. CONTROL.FIELD1 - CONTROL.FIELD1 - field1
- G. CONTROL.FIELD1 - CONTROL.FIELD2 - field3

Correct Answer: E



QUESTION 5

View the Exhibit and examine the PL/SQL code. The code uses the valmess package, which should print out the employee's salary if it exceeds 2345.

To resolve compiler or run-time errors and ensure that the code works as intended, what changes should you make to the trigger code?

```
PACKAGE valmess IS
  wage_limit number := 2345;

  function getmessage (psal number) return varchar2;
END;

Begin
  if :emp.sal > valmess.wage_limit then
    message (valmess.getmessage ('emp.sal'));
  end if;
End;
```

- A. No changes are required.
- B. Delete the BEGIN and END keywords.
- C. Define an EXCEPTION section to handle exceptions.
- D. Pass the Forms variable to the package function with the format :block_name.item_name.
- E. Define a DECLARE section to declare PL/SQL variables.

Correct Answer: D

QUESTION 6

Consider the following scenario:

In a multiform application, the user started in FormA.

1.

From FormA, the user invoked FormB using CALL_FORM.



2.
From FormB, the user invoked FormC using OPEN_FORM.
3.
From FormC, the user invoked FormD using OPEN_FORM.
4.
From FormB, the user invoked FormE using CALL_FORM. FormE contains a button with a When-Button-Pressed trigger. Which trigger code will close the form and navigate successfully?
- A. CLOSE_FORM(\\FormA\\);GO_FORM(\\FormD\\);
 - B. CLOSE_FORM(\\FormA\\);GO_FORM(\\FormC\\);
 - C. CLOSE_FORM(\\FormB\\);GO_FORM(\\FormC\\);
 - D. CLOSE_FORM(\\FormC\\);GO_FORM(\\FormB\\);
 - E. CLOSE_FORM(\\FormC\\);GO_FORM(\\FormD\\);
 - F. CLOSE_FORM(\\FormD\\);GO_FORM(\\FormA\\);

Correct Answer: E

QUESTION 7

You have the Orders form open in Forms Builder. You create an object group in the Orders form and you try to drag various components in the Object Navigator to the object group. Which two components will you be unable to place in the object group? (Choose two.)

- A. the Orders block of the Orders form
- B. the Order_CV canvas of the Orders form
- C. the When-New-Item-Instance trigger of the Order_Items.Quantity item in the Orders form
- D. the When-New-Form-Instance trigger of the Orders form
- E. the Product_Id item in the Order_Items block of the Orders form

Correct Answer: CE

QUESTION 8

In the Orders form, you create a button in the CONTROL block to send the input focus to the INVENTORIES block and cause it to be queried.

You write this code in a When-Button-Pressed trigger:



GO_BLOCK(\\Inventories\\); EXECUTE_QUERY;

What happens when you test the form?

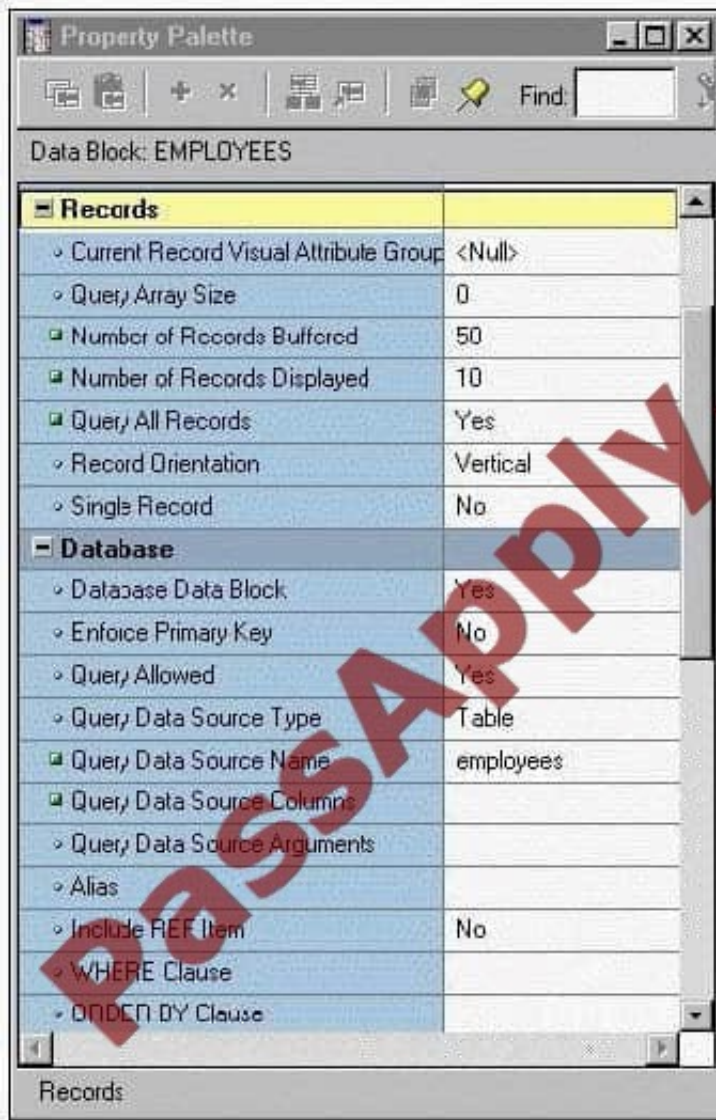
- A. The form will not compile because the block name must be uppercase.
- B. The form compiles, but clicking the button causes a Navigation Trap to be encountered. You must revise the code to avoid such a trap.
- C. The form compiles and runs as required. Focus moves to the INVENTORIES block, and it is queried automatically when the button is clicked.
- D. The form compiles and focus moves to the INVENTORIES block. But because the internal cursor is still in the CONTROL block, the query is attempted against the wrong block.
- E. The form compiles, but clicking the button causes an error message to appear. GO_BLOCK() is a restricted procedure and cannot be called from any "When" triggers.
- F. The form compiles, but clicking the button leaves the focus in the original block, which is then queried. This could have been prevented if you had coded a check for FORM_SUCCESS after the GO_BLOCK ();

Correct Answer: C

QUESTION 9

View the Exhibit.

The EMPLOYEES table contains 100 records. You are developing a Human Resources form that has an Employees block with properties as shown in the exhibit. When you run the form and execute a query in the Employees block, approximately how many network round trips will be made to the server before records are displayed in the block?



- A. 1
- B. 2
- C. 10
- D. 50
- E. 100

Correct Answer: C

QUESTION 10

Which two statements about FORM_TRIGGER_FAILURE are true? (Choose two).



- A. You cannot raise FORM_TRIGGER_FAILURE in an exception handler.
- B. FORM_TRIGGER_FAILURE does not cause an unhandled exception.
- C. FORM_TRIGGER_FAILURE causes a trigger to fail in a controlled manner.
- D. If you use FORM_TRIGGER_FAILURE to fail a trigger that is called by another trigger, the calling trigger automatically fails.
- E. Processing continues after FORM_TRIGGER_FAILURE is raised until the end of the PL/SQL block that contains it.
- F. You must code an exception handler to define how you want the FORM_TRIGGER_FAILURE exception to function.

Correct Answer: BC

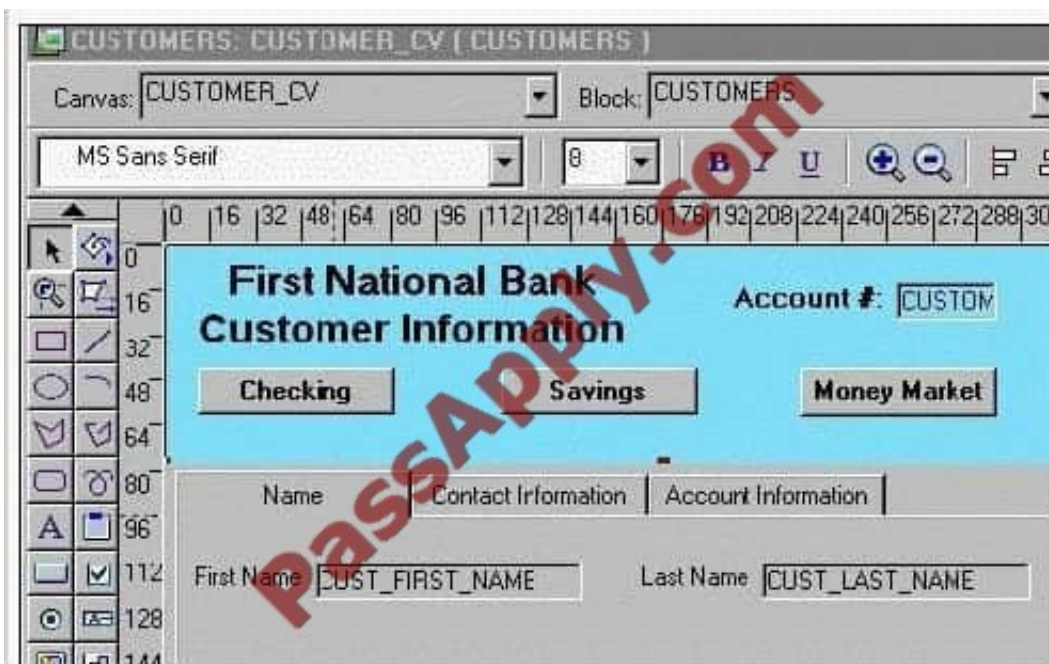
QUESTION 11

View the Exhibit.

You are developing an account management system for First National Bank. The Layout Editor for the Customer form is shown in the exhibit.

The three buttons on the form invoke separate forms to enter deposits and withdrawals for the customer's checking, savings, and money market accounts. Often deposits and withdrawals to these accounts are accomplished as part of a single transaction, so they must all be committed together or all rolled back if the commit fails.

How should you code the Checking button?



- A. OPEN_FORM(\\Checking\\);



- B. OPEN_FORM(\\Checking\\,SESSION);
- C. OPEN_FORM(\\Checking\\,SESSION,ACTIVATE);
- D. OPEN_FORM(\\Checking\\,SESSION,NO_ACTIVATE);

Correct Answer: A

QUESTION 12

In the Product.fmb module, data block items are displayed on two content canvases. You define a set of icon buttons that users must have access to at all times.

Which canvas type is appropriate to display the buttons?

- A. overlay stacked canvas
- B. overlay Tab canvas that is associated with a separate window
- C. content canvas that is associated with the same window as the two content canvases
- D. Horizontal Toolbar canvas that is associated with a separate window
- E. Horizontal Toolbar canvas that is associated with the same window as the two content canvases

Correct Answer: E

[1Z0-141 Study Guide](#)

[1Z0-141 Exam Questions](#)

[1Z0-141 Braindumps](#)



To Read the [Whole Q&As](#), please purchase the [Complete Version](#) from [Our website](#).

Try our product !

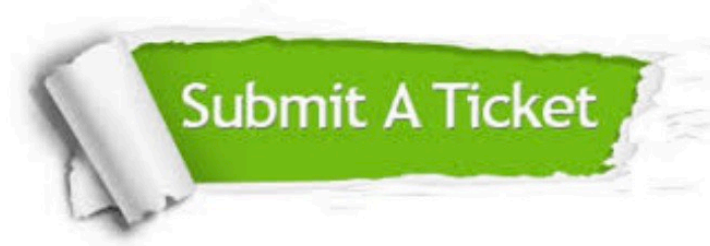
100% Guaranteed Success
100% Money Back Guarantee
365 Days Free Update
Instant Download After Purchase
24x7 Customer Support
Average 99.9% Success Rate
More than 800,000 Satisfied Customers Worldwide
Multi-Platform capabilities - [Windows](#), [Mac](#), [Android](#), [iPhone](#), [iPod](#), [iPad](#), [Kindle](#)

We provide exam PDF and VCE of Cisco, Microsoft, IBM, CompTIA, Oracle and other IT Certifications. You can view Vendor list of All Certification Exams offered:

<https://www.passapply.com/allproducts>

Need Help

Please provide as much detail as possible so we can best assist you.
To update a previously submitted ticket:



 <p>One Year Free Update Free update is available within One Year after your purchase. After One Year, you will get 50% discounts for updating. And we are proud to boast a 24/7 efficient Customer Support system via Email.</p>	 <p>Money Back Guarantee To ensure that you are spending on quality products, we provide 100% money back guarantee for 30 days from the date of purchase.</p>	 <p>Security & Privacy We respect customer privacy. We use McAfee's security service to provide you with utmost security for your personal information & peace of mind.</p>
---	---	--

Any charges made through this site will appear as Global Simulators Limited.
All trademarks are the property of their respective owners.
Copyright © passapply, All Rights Reserved.