



1D0-571^{Q&As}

CIW V5 Security Essentials

Pass CIW 1D0-571 Exam with 100% Guarantee

Free Download Real Questions & Answers **PDF** and **VCE** file from:

<https://www.passapply.com/1d0-571.html>

100% Passing Guarantee
100% Money Back Assurance

Following Questions and Answers are all new published by CIW Official Exam Center

- ⚙️ **Instant Download** After Purchase
- ⚙️ **100% Money Back** Guarantee
- ⚙️ **365 Days** Free Update
- ⚙️ **800,000+** Satisfied Customers



**QUESTION 1**

A new server has been placed on the network. You have been assigned to protect this server using a packet-filtering firewall. To comply with this request, you have enabled the following ruleset:

Rule Number	Action	SRC IP	DST IP	SRC Port	DST Port	Protocol
1	Allow	192.168.10.0/24	*	110	> 1023	TCP
2	Allow	*	192.168.10.0/24	< 1023	110	TCP
3	Allow	192.168.10.0/24		< 1023	< 1023	TCP
4	Allow	*	192.168.10.0/24	< 1023	< 1023	TCP

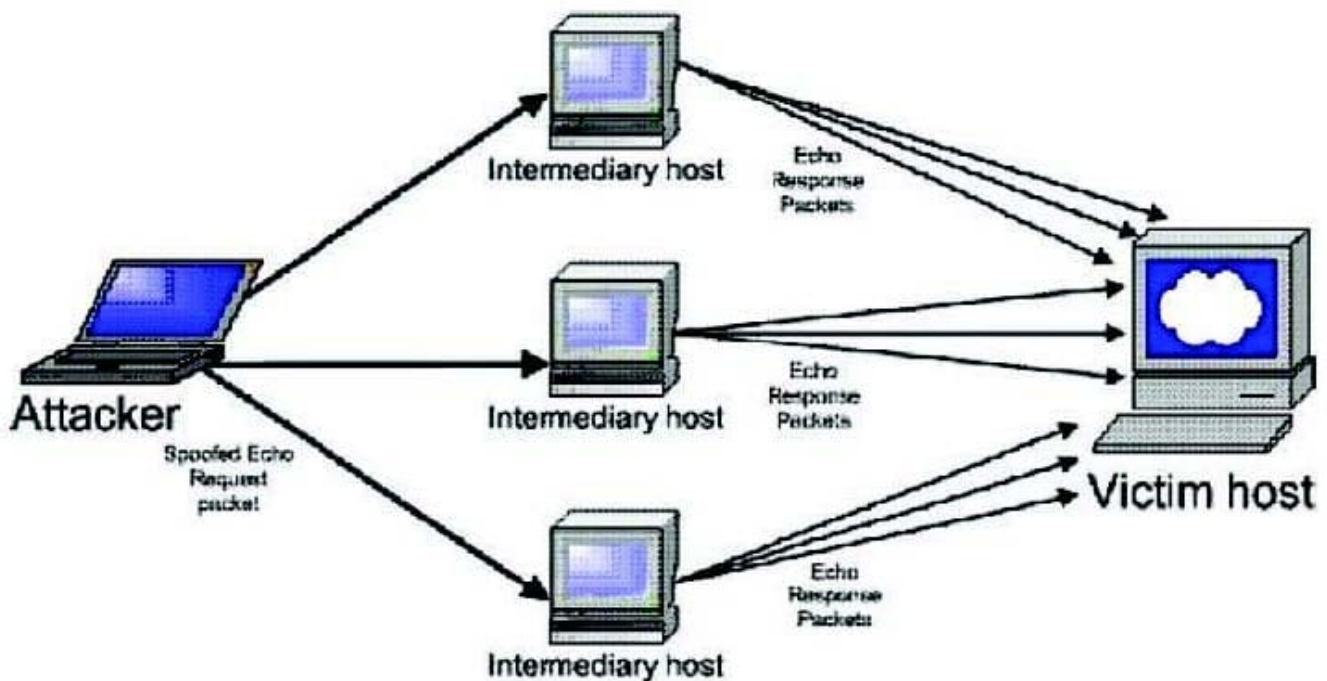
Which choice describes the next step to take now that this ruleset has been enabled?

- A. From the internal network, use your Web browser to determine whether all internal users can access the Web server.
- B. From the internal network, use your e-mail client to determine whether all internal users can access the e-mail server.
- C. From the external network, use your Web browser to determine whether all external users can access the Web server.
- D. From the external network, use your e-mail client to determine whether all external users can access the e-mail server.

Correct Answer: D

QUESTION 2

Consider the following diagram:



Which type of attack is occurring?

- A. Polymorphic virus-based attack
- B. Denial-of-service attack
- C. Distributed denial-of-service attack
- D. Man-in-the-middle attack using a packet sniffer

Correct Answer: C

QUESTION 3

You have just deployed an application that uses hash-based checksums to monitor changes in the configuration scripts of a database server that is accessible via the Internet. Which of the following is a primary concern for this solution?

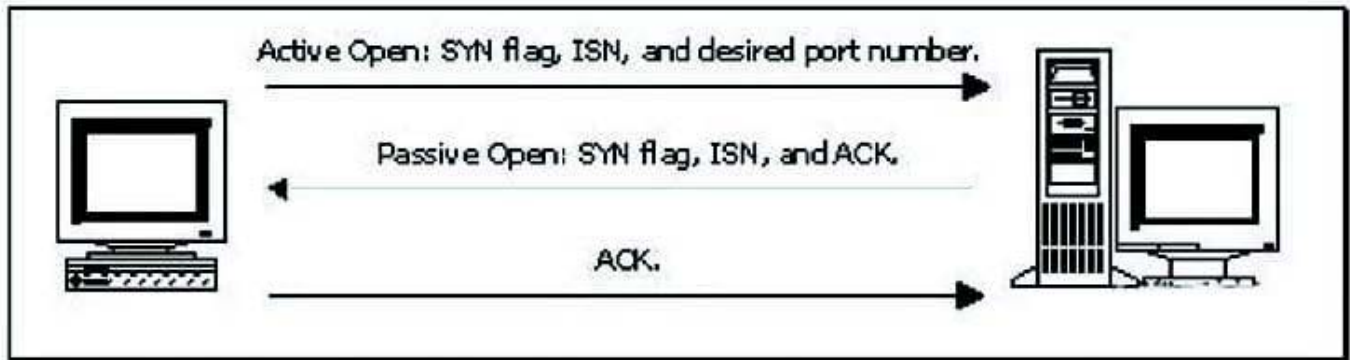
- A. The extra hard disk space required to store the database of checksums
- B. The amount of memory remaining now that the checksum-based application is running
- C. The possibility of a bufferoverflow attack leading to a security breach
- D. The security of the checksum database on a read-only media format

Correct Answer: D

QUESTION 4



Consider the following diagram:



Which of the following best describes the protocol activity shown in the diagram, along with the most likely potential threat that accompanies this protocol?

- A. The ICMP Time Exceeded message, with the threat of a denial-of-service attack
- B. The SIP three-way handshake, with the threat of a buffer overflow
- C. The TCP three-way handshake, with the threat of a man-in-the-middle attack
- D. The DNS name query, with the threat of cache poisoning

Correct Answer: C

QUESTION 5

Which of the following applications can help determine whether a denial-of-service attack is occurring against a network host?

- A. Thenetstat command and a packet sniffer
- B. Theps command and a network scanner
- C. The ping command and User Manager
- D. Theiptables command and Windows desktop firewall

Correct Answer: A

QUESTION 6

You want to create a quick solution that allows you to obtain real-time login information for the administrative account on an LDAP server that you feel may become a target. Which of the following will accomplish this goal?

- A. Reinstall the LDAP service on the server so that it is updated and more secure.
- B. Install an application that creates checksums of the contents on the hard disk.
- C. Create a login script for the administrative account that records logins to a separate server.



D. Create a dummy administrator account on the system so that a potential hacker is distracted from the real login account.

Correct Answer: C

QUESTION 7

Which of the following is a primary auditing activity?

- A. Encrypting data files
- B. Changing login accounts
- C. Checking log files
- D. Configuring the firewall

Correct Answer: C

QUESTION 8

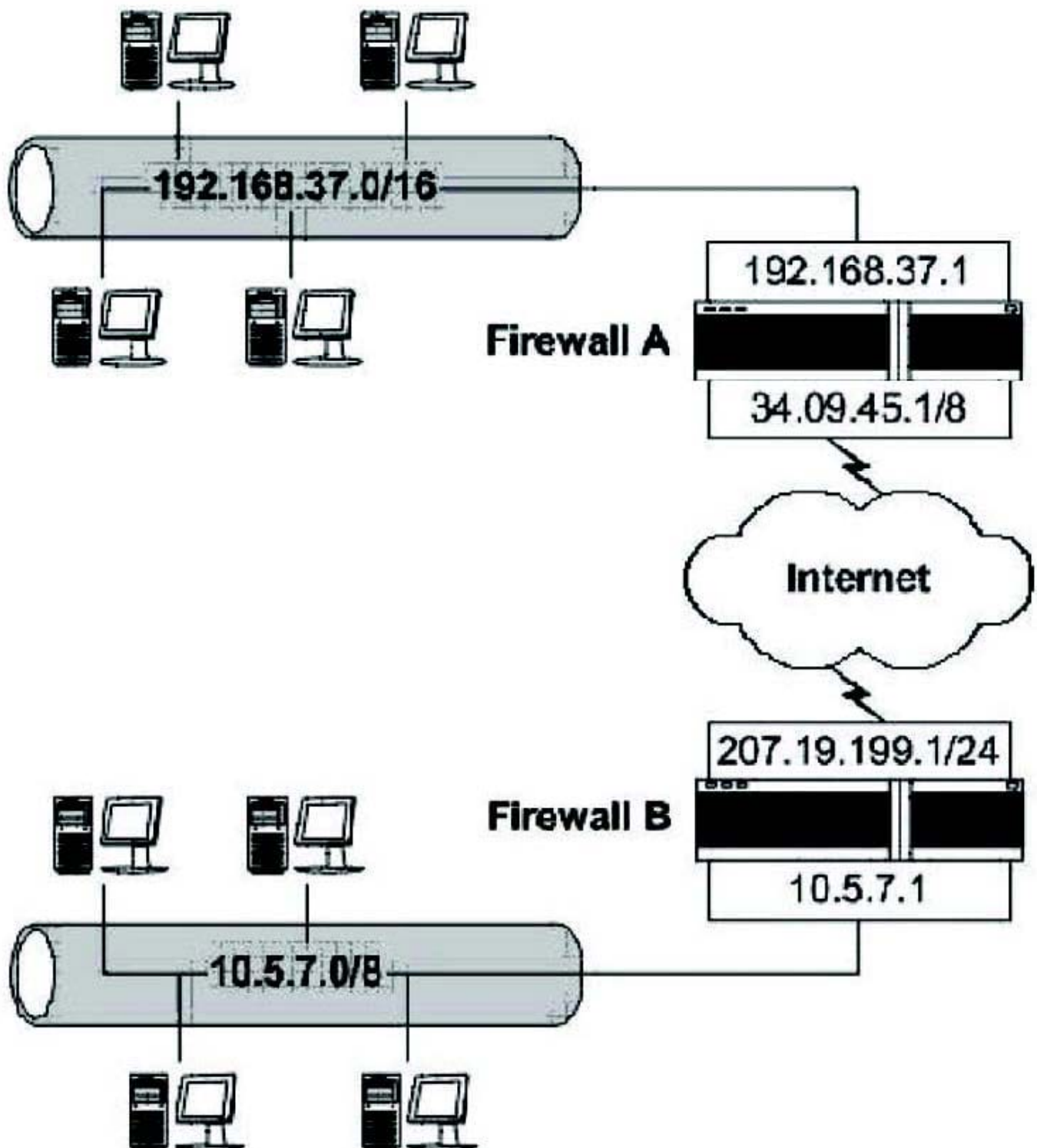
Which of the following describes the practice of stateful multi-layer inspection?

- A. Using a VLAN on a firewall to enable masquerading of private IP addresses
- B. Prioritizing voice and video data to reduce congestion
- C. Inspecting packets in all layers of the OSI/RM with a packet filter
- D. Using Quality of Service (QoS) on a proxy-oriented firewall

Correct Answer: C

QUESTION 9

Consider the following diagram involving two firewall-protected networks: Which of the following is necessary for each of the firewalls to allow private IP addresses to be passed on to the Internet?



- A. Chargeback
- B. Stateful multi-layer inspection
- C. Masquerading
- D. DMZ creation



Correct Answer: C

QUESTION 10

You are creating an information security policy for your company. Which of the following activities will help you focus on creating policies for the most important resources?

- A. Auditing the firewall
- B. Implementing non-repudiation
- C. Logging users
- D. Classifying systems

Correct Answer: D

QUESTION 11

What is the primary use of hash (one-way) encryption in networking?

- A. Signing files, for data integrity
- B. Encrypting files, for data confidentiality
- C. Key exchange, for user authentication
- D. User authentication, for non-repudiation

Correct Answer: A

QUESTION 12

You want to create a certificate for use in a Secure Sockets Layer (SSL) session. Which of the following is responsible for verifying the identity of an individual and also issuing the certificate?

- A. Kerberos server
- B. Certificate authority
- C. Certificate revocation entity
- D. Certificate repository

Correct Answer: B

QUESTION 13

The best way to thwart a dictionary attack is by enforcing a:



- A. strong password policy.
- B. restricted access policy.
- C. firewall configuration policy.
- D. proxy server policy.

Correct Answer: A

QUESTION 14

You have implemented a version of the Kerberos protocol for your network. What service does Kerberos primarily offer?

- A. Authentication
- B. Encryption
- C. Non-repudiation
- D. Data integrity

Correct Answer: A

QUESTION 15

You are using a PKI solution that is based on Secure Sockets Layer (SSL). Which of the following describes the function of the asymmetric-key-encryption algorithm used?

- A. It encrypts the symmetric key.
- B. It encrypts all of the data.
- C. It encrypts the hash code used for data integrity.
- D. It encrypts the X.509 key.

Correct Answer: A

[1D0-571 Study Guide](#)

[1D0-571 Exam Questions](#)

[1D0-571 Braindumps](#)