



156-815^{Q&As}

Check Point Certified Managed Security Expert NGX

Pass CheckPoint 156-815 Exam with 100% Guarantee

Free Download Real Questions & Answers **PDF** and **VCE** file from:

<https://www.passapply.com/156-815.html>

100% Passing Guarantee
100% Money Back Assurance

Following Questions and Answers are all new published by CheckPoint
Official Exam Center

-  **Instant Download** After Purchase
-  **100% Money Back** Guarantee
-  **365 Days** Free Update
-  **800,000+** Satisfied Customers





QUESTION 1

You manage several customers with Multi-Domain Management with Provider-1 Two of the customers need to be connected via a global VPN using VPN Communities in a Global Rule In the MDG, you configure both Gateways to be enabled for Global use Then you define a Global VPN Community in the Global SmartDashboard.

How do you configure a rule so that encrypted HTTP traffic is accepted between the corresponding Gateways?

- A. In the menu of the Global SmartDashboard, select Policy > Convert To Simplified Mode, follow the Wizard and define a rule accepting HTTP traffic that fits to the community listed in the column VPN
- B. It's possible to define Global VPN Communities, but it is not possible to use them in a Global Rule Base
- C. In the Global SmartDashboard, define a rule accepting the wanted traffic In the column VPN select the VPN community you have defined
- D. After having defined a Global VPN Community, the Global Rule Base needs to be assigned to both customers The VPN can only be defined in each (local) CMA individually

Correct Answer: A

QUESTION 2

The NOC firewall must allow the to give a remote MDG access to the MDS

- A. CPMI service
- B. TCP_GUI service
- C. CP_GUI service
- D. FW1_MGMT service

Correct Answer: A

QUESTION 3

You have a Global Policy assigned to multiple customers with Assign all Global Objects enabled, and now one of those customers requires a different set of security rules that are not similar to any other Global Policy They have been using Global Objects in their Local Security Policy, so when trying to detach the policy, it fails, stating "Global Objects are in use and cannot be removed".

Which of the following would accomplish the customer's expectations?

- A. Change Customer settings from Assign all Global Objects to Only assign Global Objects defined in policy
- B. Create a new Global Policy with an empty Rule Base and re-assign that policy to the customer in question



- C. Delete the global rules out of the customer's Local Security Policy
- D. Delete all global objects out of the customer's Local Security Policy

Correct Answer: B

QUESTION 4

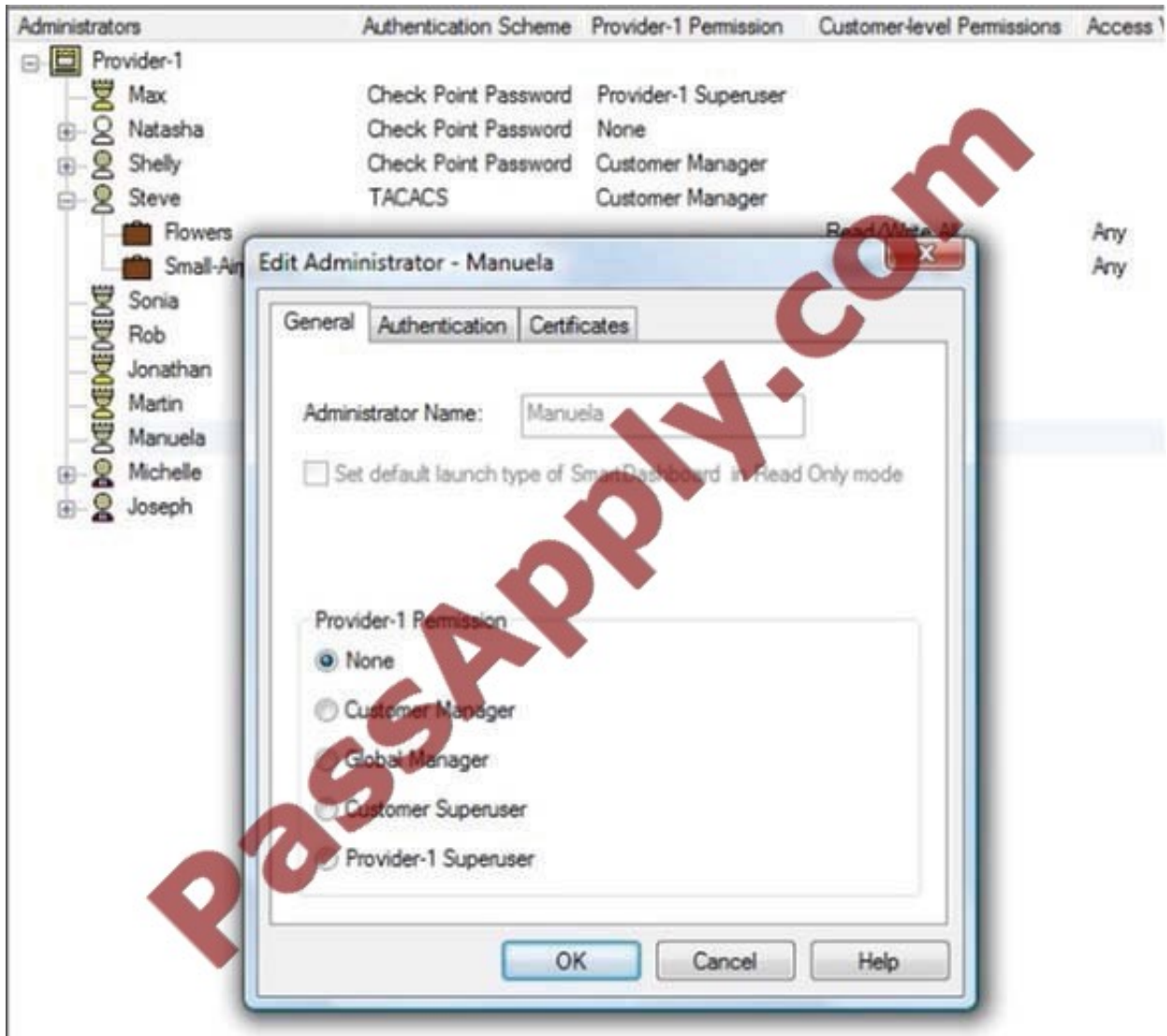
Which of the following items will NOT appear In the Customer Contents mode of the MDG?

- A. Customer Logging Modules
- B. CMAs associated with that customer
- C. Security Enforcement Modules configured on the CMAs
- D. VPN communities the customer's gateways participate in

Correct Answer: D

QUESTION 5

You are the responsible administrator for two customers managed by your MSP You must configure each CMA with local objects as well as rules. You have to configure the IPS accordingly In addition, you will configure and assign Global Rules for your customers.



What minimum rights do you need at the MDS?

- A. Provider Superuser
- B. Customer Manager
- C. Customer Superuser
- D. Global Manager

Correct Answer: D

QUESTION 6

Which subdirectory under /opt contains installation and upgrade log files?

- A. CPInstLog



- B. CPIlog
- C. CPLogInst
- D. CPlog

Correct Answer: A

QUESTION 7

The CLM when configured in a Multi-Domain Management with Provider-1 R71 environment.

- A. Serves as a backup CMA for CMA-level High Availability
- B. Protects the Provider-1 system from a network attack
- C. Receives log data for managed CMAs
- D. Regulates ConnectControl traffic from the NOC to remote Gateways

Correct Answer: C

QUESTION 8

How would you navigate to the screen shown?



General | Licenses

Multi Domain Server Name: LabP1

Multi Domain Server IP Address: 172.25.233.90

Multi Domain Server Type: Manager

Customer Management Add-on IP Address Range:

Status Checking Interval

Set to: 300 seconds

Secure Internal Communication

DN: cn=cp_mgmt,o=LabP1..k8gryc

- A. Customer Contents > Right-click Provider-1 > Manager 1 > Settings
- B. File > Edit > Customer Management Settings
- C. Manage Menu > Provider-1/Site > Manager 1 > Properties
- D. MDS Contents > Right-click MDS > Configure Multi Domain Server

Correct Answer: D

QUESTION 9

Which of the following is not an MDS level process?

- A. CPD
- B. FWD
- C. status_proxy
- D. fwm mds

Correct Answer: C



QUESTION 10

On which component can you install Global Security Rules?

- A. Admin Customer Management Add-On
- B. Multi-Domain Servers
- C. Open Security Extension (OSE) Devices
- D. Management Servers

Correct Answer: C

QUESTION 11

What CLI command do you use to perform Cross-CMA searches?

- A. mdsconfig querycma
- B. mdsenv searchall
- C. fwm searchcma
- D. mdscmd runcrosscmaquery

Correct Answer: D

QUESTION 12

The name of the script responsible for MDS\'\' automatic start is:

- A. Mdsstart
- B. Mds1
- C. firewall1
- D. Fwstart

Correct Answer: C



To Read the [Whole Q&As](#), please purchase the [Complete Version](#) from [Our website](#).

Try our product !

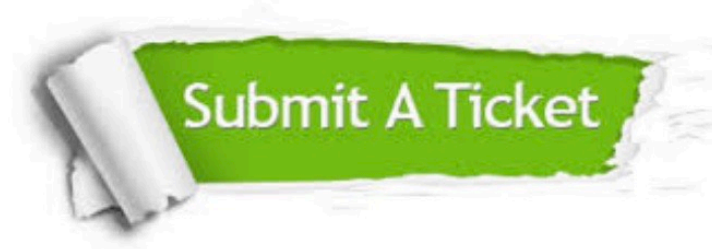
100% Guaranteed Success
100% Money Back Guarantee
365 Days Free Update
Instant Download After Purchase
24x7 Customer Support
Average 99.9% Success Rate
More than 800,000 Satisfied Customers Worldwide
Multi-Platform capabilities - [Windows](#), [Mac](#), [Android](#), [iPhone](#), [iPod](#), [iPad](#), [Kindle](#)

We provide exam PDF and VCE of Cisco, Microsoft, IBM, CompTIA, Oracle and other IT Certifications. You can view Vendor list of All Certification Exams offered:

<https://www.passapply.com/allproducts>

Need Help

Please provide as much detail as possible so we can best assist you.
To update a previously submitted ticket:



 <p>One Year Free Update Free update is available within One Year after your purchase. After One Year, you will get 50% discounts for updating. And we are proud to boast a 24/7 efficient Customer Support system via Email.</p>	 <p>Money Back Guarantee To ensure that you are spending on quality products, we provide 100% money back guarantee for 30 days from the date of purchase.</p>	 <p>Security & Privacy We respect customer privacy. We use McAfee's security service to provide you with utmost security for your personal information & peace of mind.</p>
---	---	--

Any charges made through this site will appear as Global Simulators Limited.
All trademarks are the property of their respective owners.
Copyright © passapply, All Rights Reserved.